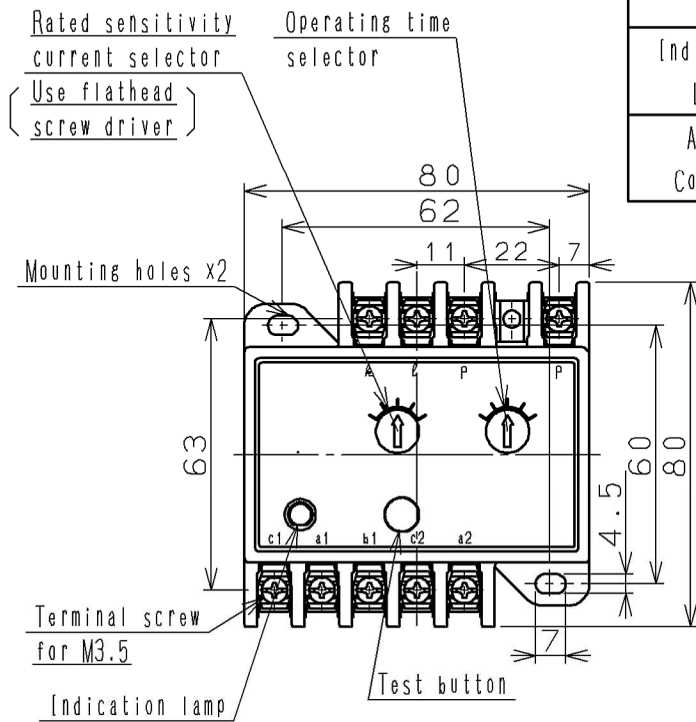
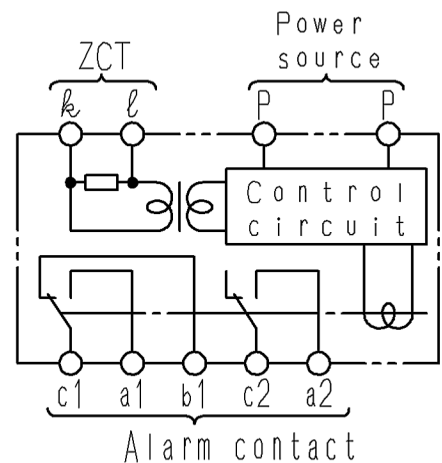
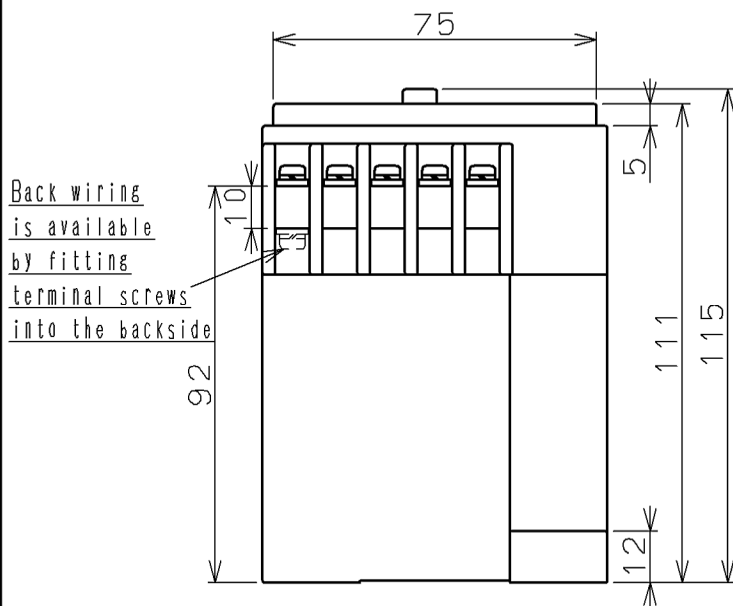
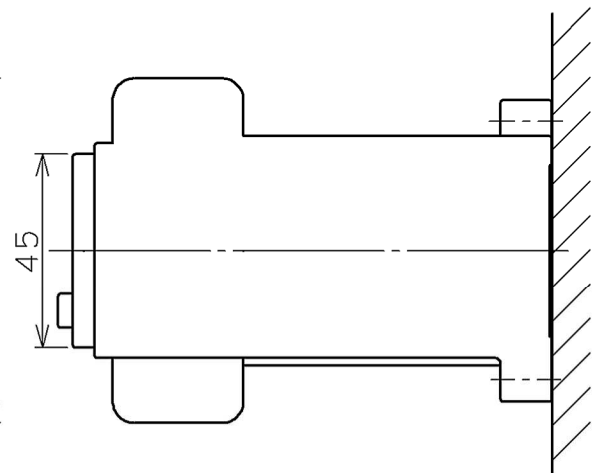


R-NZGK EARTH-LEAKAGE RELAY (AUTOMATIC RESET TYPE)

Rated Voltage (AC, V)	Frequency (Hz)	Rated sensitivity Current (mA)	Operating time (S)	Alarm Contact	Base Amb. Temp. (°C)	Weight (kg)
100-440	50·60	100·200·500 1000·2000	0.3 (0.2·0.5·1) 2·4	1c+1a	40	0.25



	Latching system	Reset operation
Indication Lamp	Electrical Latch	Reset automatically when leakage current stopped
Alarm Contact	Electrical Latch	Reset automatically when leakage current stopped



Connecting Diagram

CUSTOMER			DWN.	<i>K. Miyajima</i>	Nov-30-2012		TITLE	R-NZGK DIMENSION	REV.	00
			CHKD.	<i>D. Nakamura</i>	Nov-30-2012					
QUANTITY	ORDER NO.	WORK NO.	APPD.	<i>K. Aikawa</i>	Nov-30-2012		NAKAJO WORKS DWG. NO.		325 43069279	
Hitachi Industrial Equipment Systems Co., Ltd.										