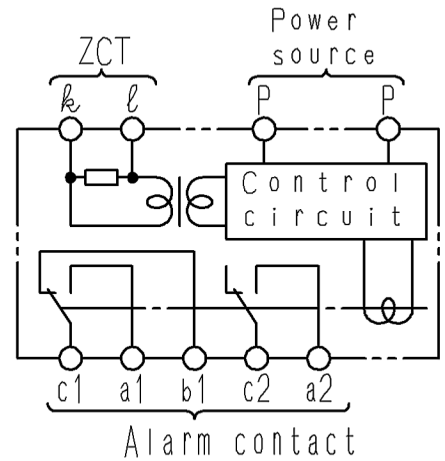
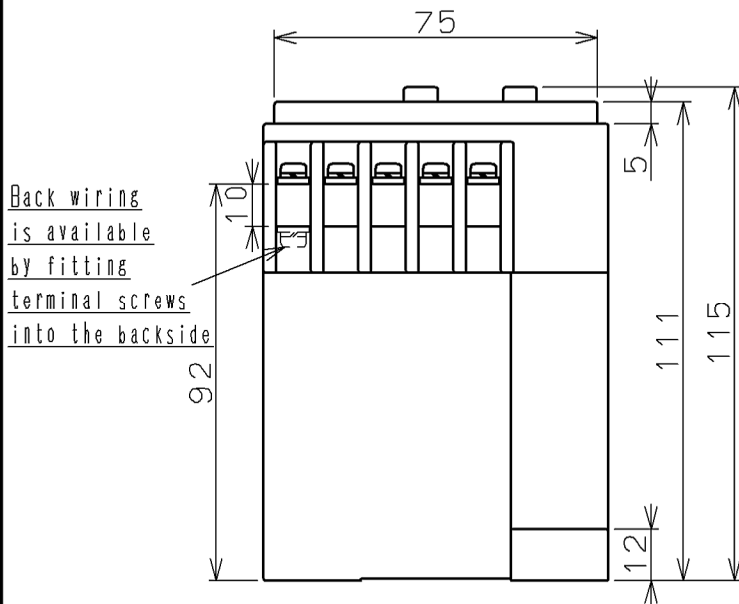
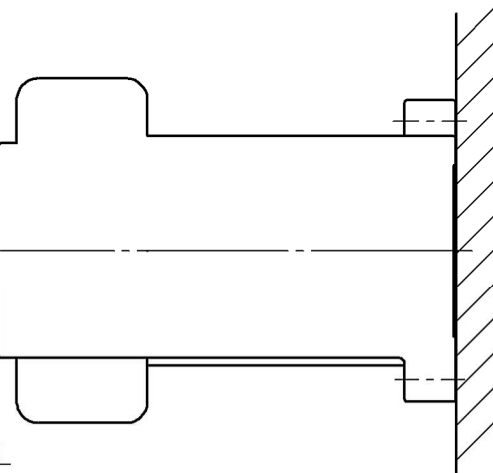
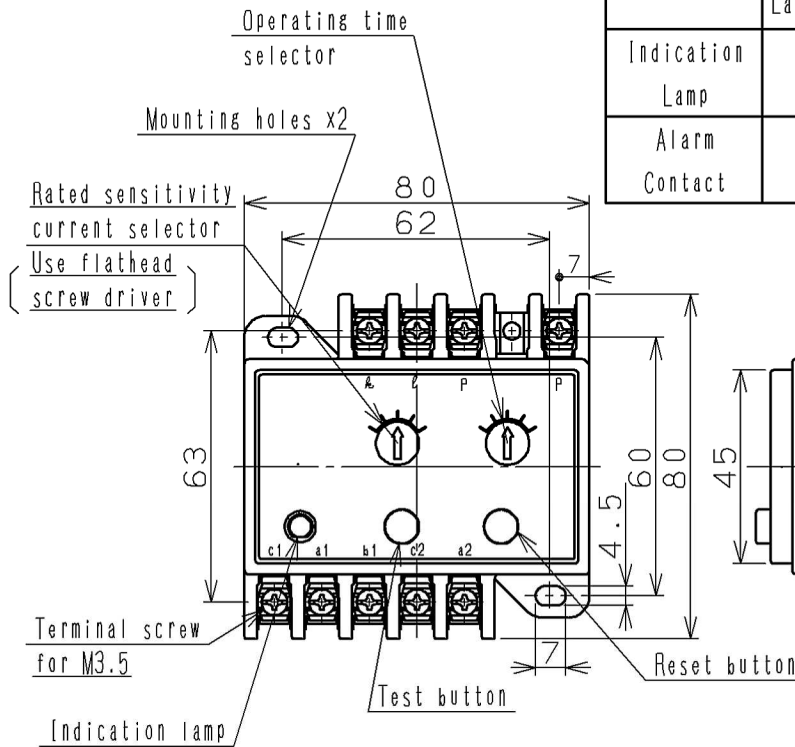


R-NZGR EARTH-LEAKAGE RELAY (AUTOMATIC RESET AND LAMP HOLD-ON TYPE)

Rated Voltage (AC.V)	Frequency (Hz)	Rated sensitivity Current (mA)	Operating time (S)	Alarm Contact	Base Amb. Temp. (°C)	Weight (kg)
100-440	50-60	100-200-500 1000-2000	0.3 (0.2-0.5-1) 2-4	1c+1a	40	0.25

	Latching system	Reset operation
Indication Lamp	Electrical Latch	Push the reset button or turn off a power source
Alarm Contact	Electrical Latch	Reset automatically when leakage current stopped



Connecting Diagram

CUSTOMER			DWN.	<i>K. Miyajima</i>	Nov-30-2012		TITLE	R-NZGR DIMENSION	REV.	00
			CHKD.	<i>D. Nakamura</i>	Nov-30-2012					
QUANTITY	ORDER NO.	WORK NO.	APPD.	<i>K. Aikawa</i>	Nov-30-2012		NAKAJO WORKS DWG. NO.		325 43069280	
Hitachi Industrial Equipment Systems Co., Ltd.										