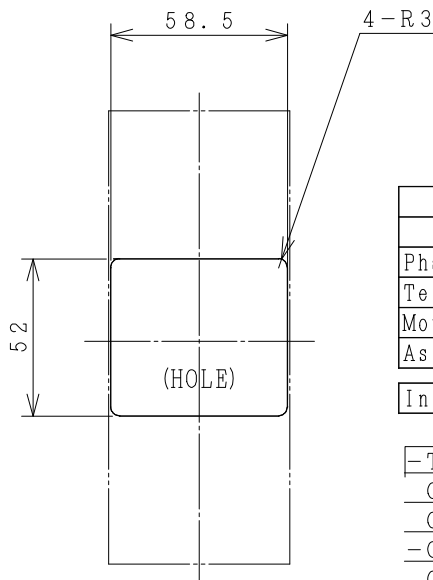
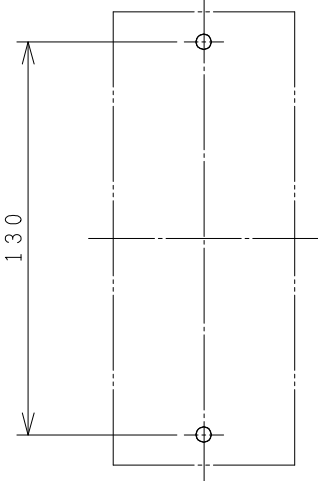
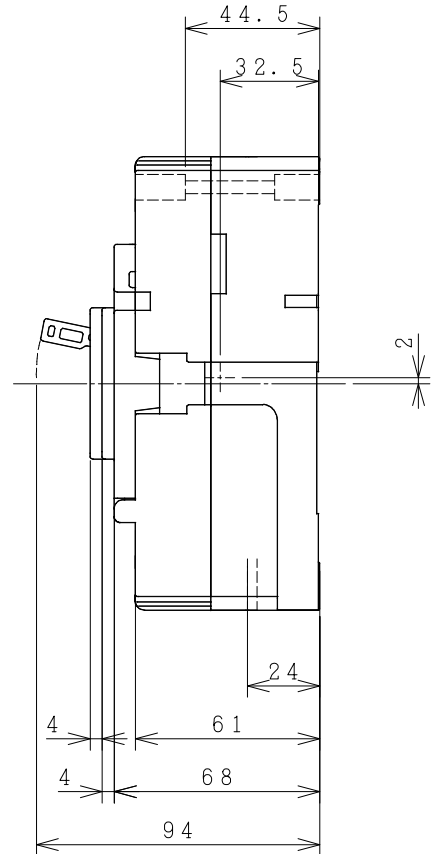
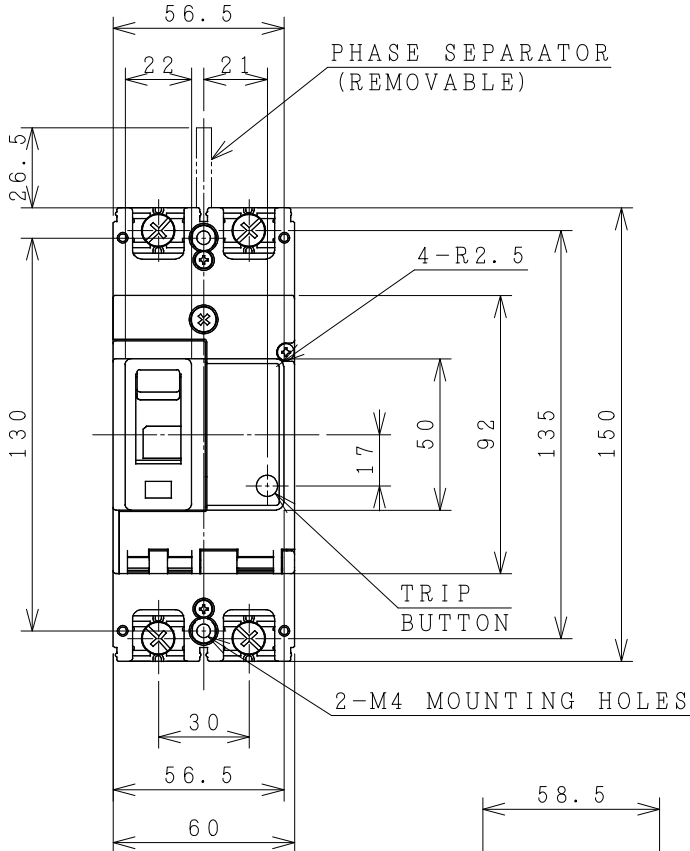


HITACHI MOLDED CASE CIRCUIT BREAKER

Type	Poles	Rated Insulation Voltage (Ui)	IEC 60947-2		Rated Current	Base Ambient Temperature	Weight
			Icu/Ics [kA]	230V			
FXX50-HU	2	690	100/50	50/25	3 5 10 A	40	△ 0.8
FXX125-S			50/50	30/30	15 20 △32 40		
FXX125-H			100/100	50/50	50 63 75 100		
△FXX125-M			70/70	36/36	125		



ACCESSORIES			
Part	Size		Q'ty
	3~50 A	63~125 A	
Phase separator	-	-	2
Terminal screw/bolt	M6x14	M8x14	4
Mounting screw	M4x55	M4x55	2
Assistant handle	-	-	-

Interior accessories AL, AUX, SHT

-THESE DIMENSIONS THE HEIGHT OF FRONT PLATE FROM BASE OF CASE TO COVER IS 68mm.
 -CLEARANCE 1mm ON EACH SIDE OF HANDLE.

DRILLING PLAN.

FRONT PLATE CUTOUT.

(Reference 43067299R02).

REMARK

-DIMENSION UNIT = Millimeter (mm).

DWN.	S. CHAIAMPOL	03/03/17	PROJECTION
CHKD.	J. JANDER	S	SCALE
APPD.	C. KIATTISAK		NTS.
	T. SEKIGUCHI		

TITLE DIMENSION OF
 FXH50-HU
 FXH125-S, H, M

HITT WORKS DWG. No.

△^{x2} 03/07/20 O. SITTICHAI / Ch. Chantidom / M. Somkist / S. Sugai
 △^{x1} 03/09/19 S. CHAIAMPOL / Ch. Chantidom / M. Somkist / S. Sugai

HITACHI
 Hitachi Industrial Technology (Thailand), Ltd.

4HTN000959

REV.	02
SH.	01
	01