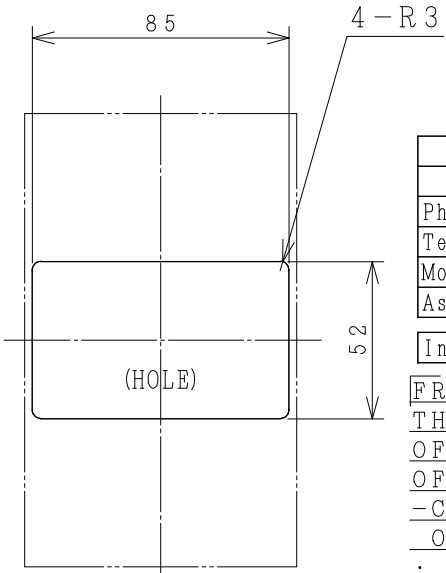
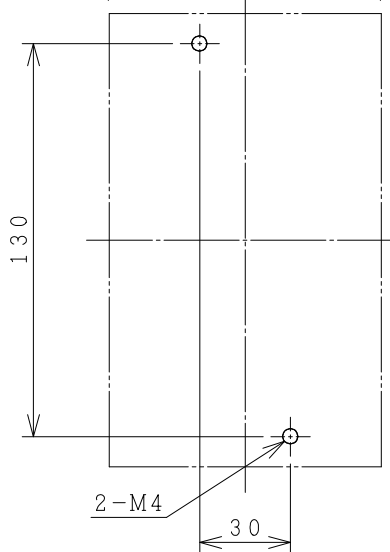
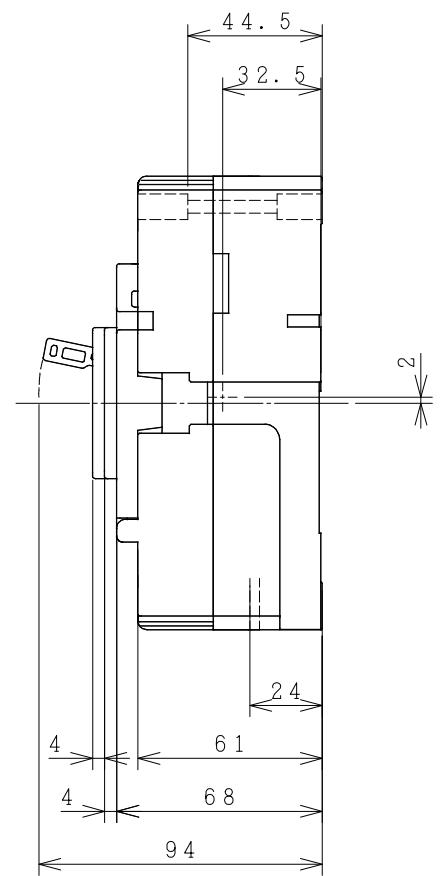
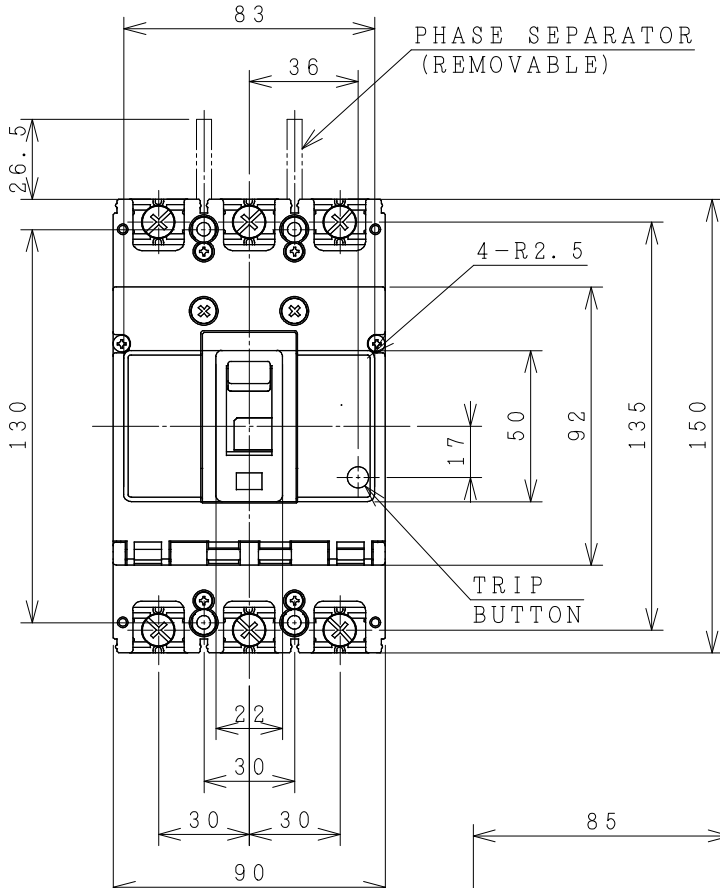


HITACHI MOLDED CASE CIRCUIT BREAKER

Type	Poles	Rated Insulation Voltage (Ui)	IEC 60947-2		Rated Current	Base Ambient Temperature	Weight	
			Icu/Ics [kA]					
FXX50-HU	3	690	230V	400V	3 5 10 A	40	△ 1.1	
FXX125-S			50/50	30/30	△			
FXX125-H			100/100	50/50	15 20 32 40			
FXX125-G			100/100	70/70	50 63 75 100			
		V			125	A	°C	kg



ACCESSORIES			
Part	Size		Q'ty
	3-50 A	63-125 A	
Phase separator	-	-	4
Terminal screw/bolt	M6x14	M8x14	6
Mounting screw	M4x55	M4x55	2
Assistant handle	-	-	-

Interior accessories AL, AUX, SHT

FRONT PLATE CUTOUT.
 THESE DIMENSIONS THE HEIGHT OF FRONT PLATE FROM BASE OF CASE TO COVER IS 68mm.
 -CLEARANCE 1mm ON EACH SIDE OF HANDLE.

△^{x2}22/06/20 O. SITTICHAJ / Ch. Chonticha / M. Somkiat / S. Sugai
 △ 11/09/19 S. CHAIAMPOL / CH. CHONTICHA / M. SOMKIAT / S. SUGAI

DWN.	S. CHAIAMPOL	03/03/17	PROJECTION	TITLE
CHKD.	J. Jantae		SCALE	DIMENSION OF FXH50-HU FXH125-S, H, G
APPD.	C. Krathisak		NTS.	

(Reference 43066544R05).
 *REMARK
 -DIMENSION UNIT = Millimeter (mm).

HITACHI
 Hitachi Industrial Technology (Thailand), Ltd.

HITT WORKS DWG. No.	REV.
4HTN000960	02
	SH.
	01
	01