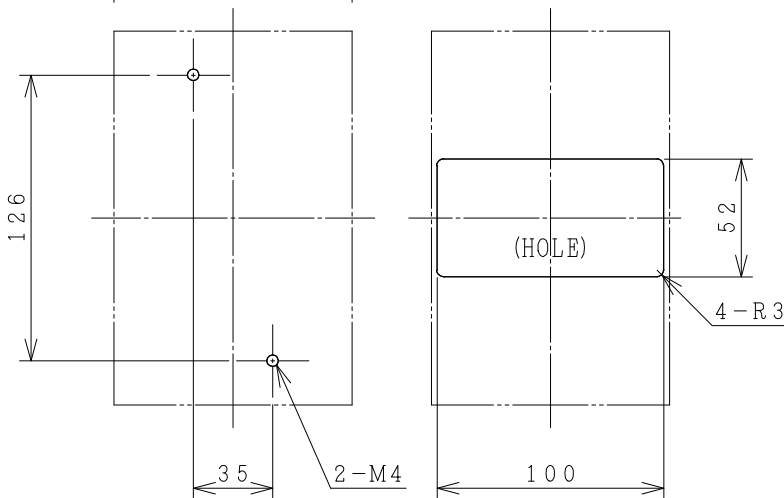
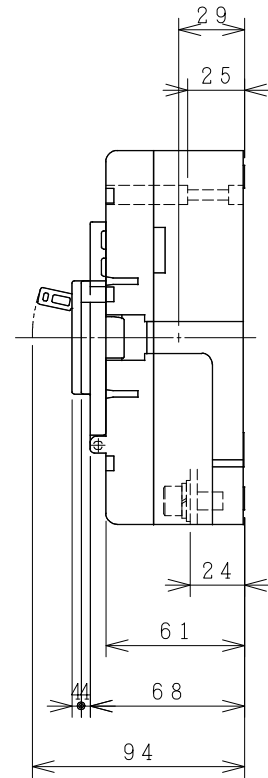
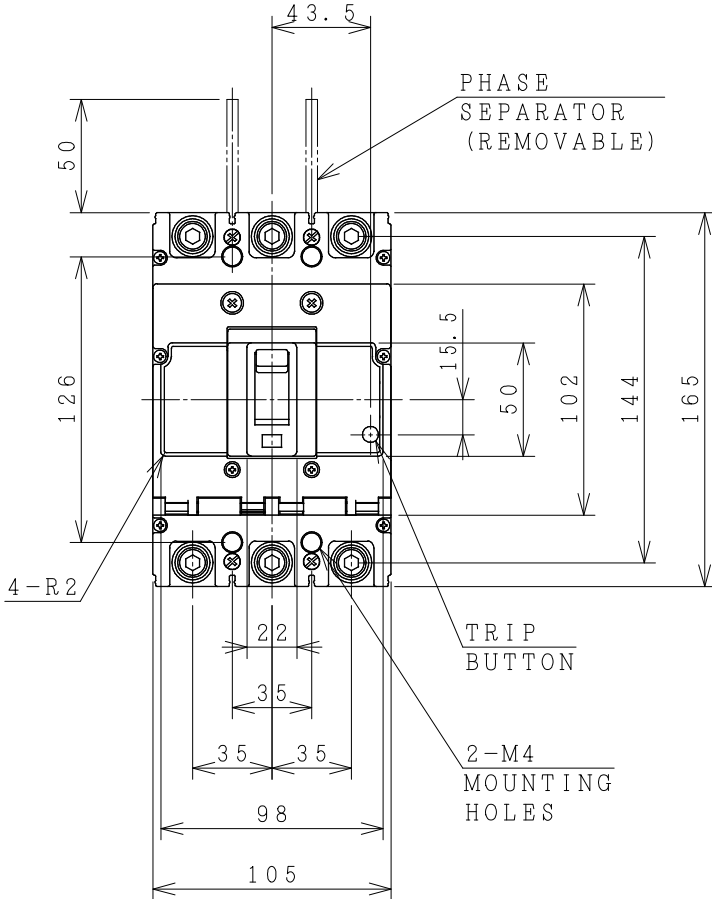


HITACHI MOLDED CASE CIRCUIT BREAKER

Type	Poles	Rated Insulation Voltage (Ui)	IEC 60947-2 Icu/Ics [kA]		Rated Current	Base Ambient Temperature	Weight
			230V	400V			
FXK250-S	2	690	50/50	30/30	125 150 175	40	1.6
FXK250-H	3		100/100	50/50	200 225 250		
FXK250-G	3		100/100	70/70	A		



DRILLING PLAN.

ACCESSORIES			
Part	Size	Q'ty	
		2P	3P
Phase separator	-	2	4
Terminal screw/bolt	M8x18	4	6
Mounting screw	M4x40	2	2
Assistant handle	-	-	-
Interior accessories	AL, AUX, SHT		

FRONT PLATE CUTOUT.
 -THESE DIMENSIONS THE HEIGHT OF FRONT PLATE FROM BASE OF CASE TO COVER IS 68mm.
 -CLEARANCE 1mm ON EACH SIDE OF HANDLE.

11/09/19 S. CHAIAMPOL/J. Imbee/S. Sugai

DWN.	S. CHAIAMPOL	03/03/17	PROJECTION	TITLE
CHKD.	J. Imbee		SCALE	DIMENSIONS OF FXK250-S FFK250-H
APPD.	C. Krathisak		NTS.	
HITT WORKS DWG. No.				REV.
HITACHI Hitachi Industrial Technology (Thailand), Ltd.				01
				01
4HTN000962				01

(Reference 43064066R03).
 REMARK
 -DIMENSION UNIT = Millimeter (mm).