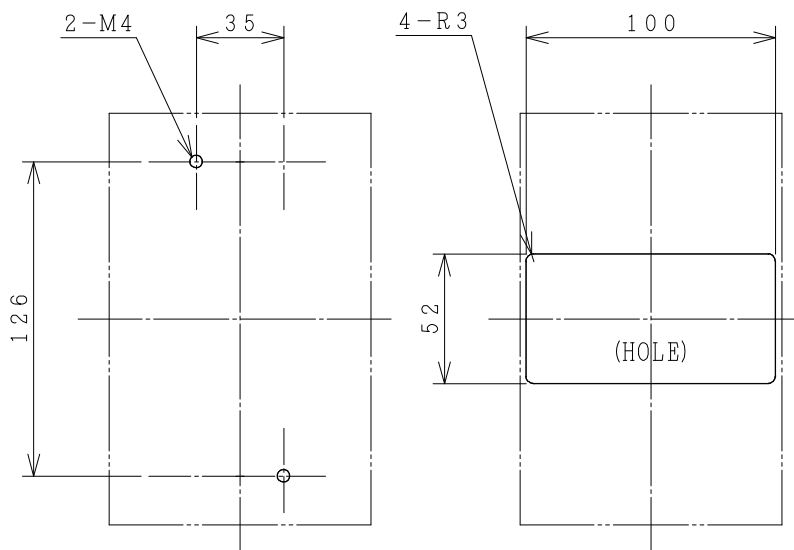
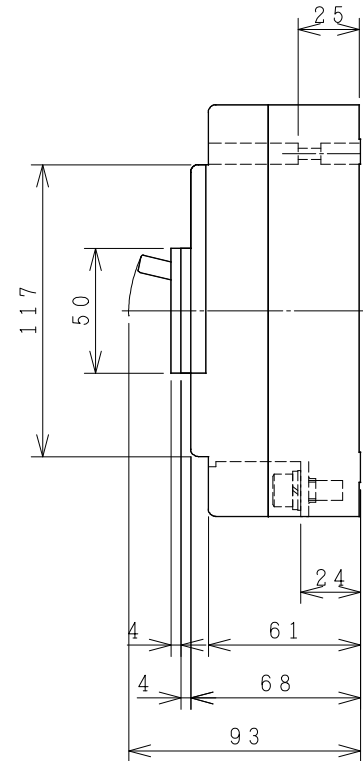
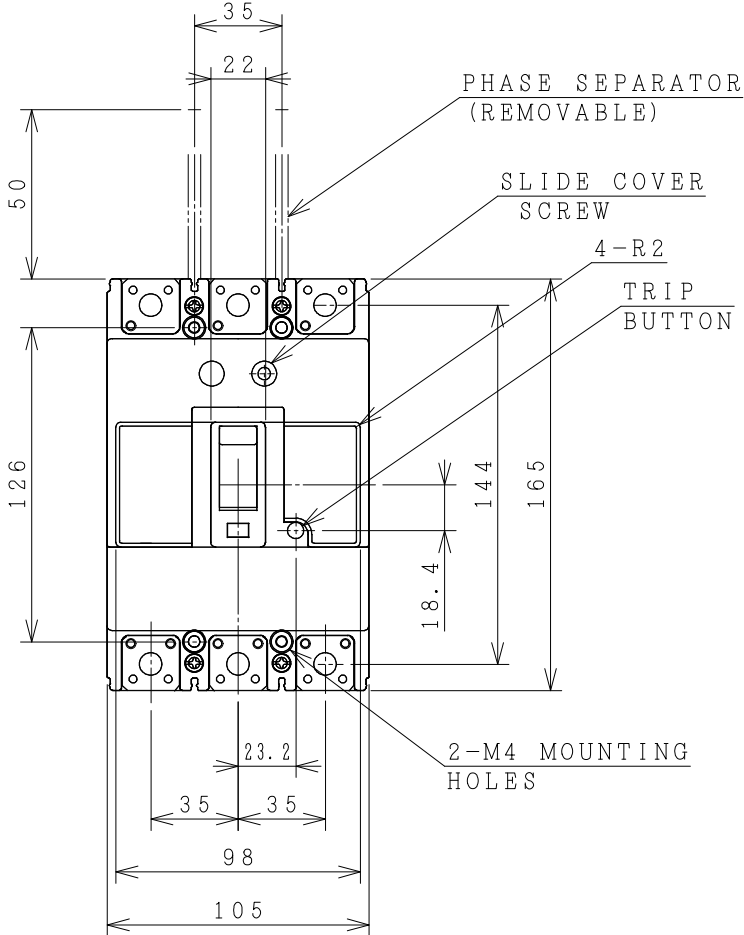


HITACHI MOLDED CASE CIRCUIT BREAKER

Type	Poles	Rated Insulation Voltage (Ui)	IEC 60947-2		Rated Current	Base Ambient Temperature	Weight
			Icu/Ics [kA]	230V			
SXK225	2	690	35/18	15/8	125 150 175	40	1.6
	3				200 225		



DRILLING PLAN.

ACCESSORIES			
Part	Size	Qty	
		2P	3P
Phase separator	-	2	4
Terminal screw/bolt	M8x18	4	6
Mounting screw	M4x40	4	4
Assistant handle	-	-	-
Interior accessories	AL, AUX, SHT		

FRONT PLATE CUTOUT.
 -THESE DIMENSIONS THE HEIGHT OF FRONT PLATE FROM BASE OF CASE TO COVER IS 68mm.
 -CLEARANCE 1mm ON EACH SIDE OF HANDLE.

(Reference 43054877R04).
 *REMARK
 -DIMENSION UNIT = Millimeter (mm).

DWN. S. CHAIAMPOL	01/03/17	PROJECTION	TITLE
CHKD. J. Jiradee			DIMENSION OF SXK225
APPD. C. Krathisak		SCALE	
		NTS.	
HITACHI Hitachi Industrial Technology (Thailand), Ltd.			HITT WORKS DWG. No.
			4HTN000980
			REV.
			00
			SH.
			01
			01