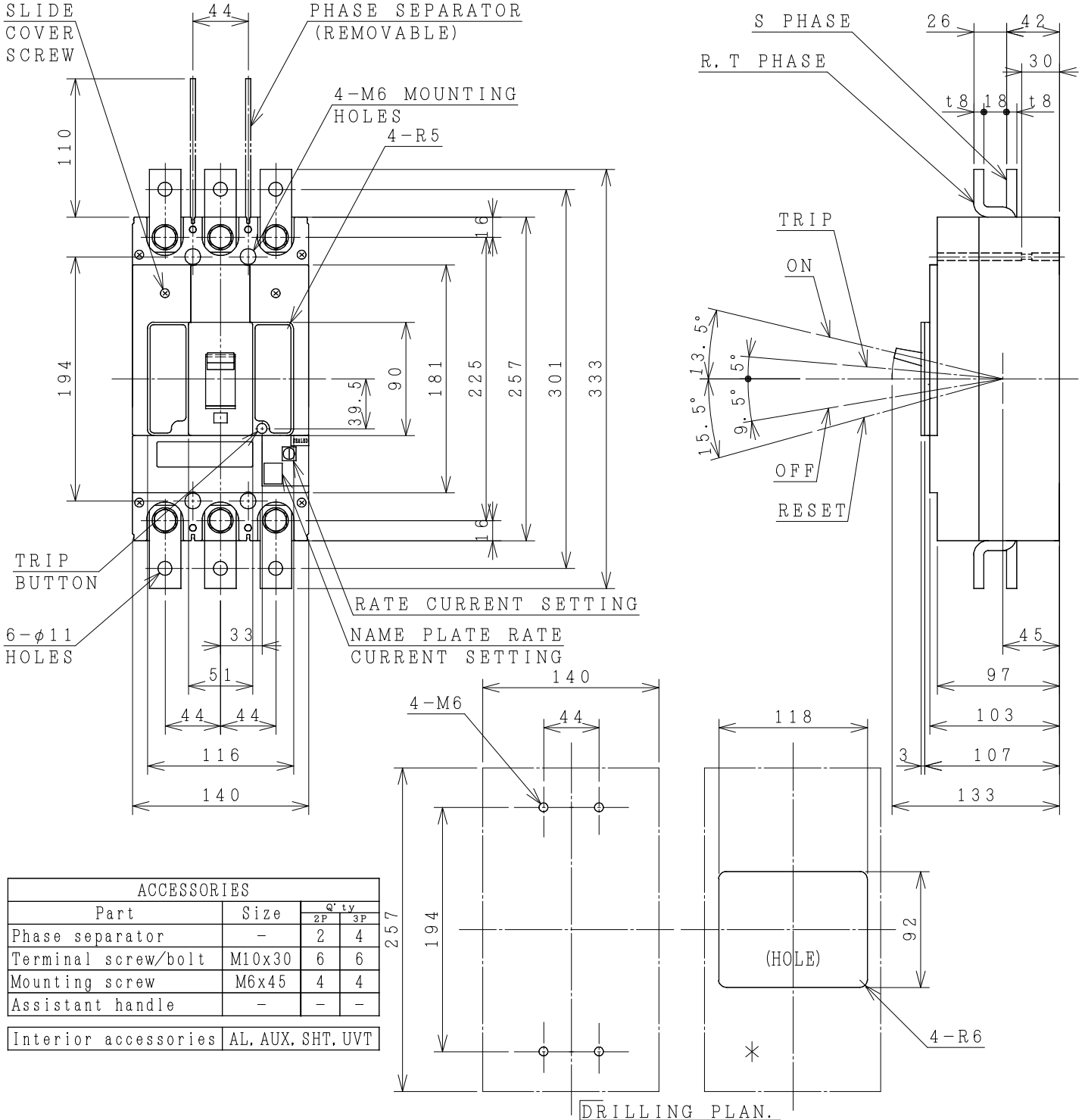


# HITACHI MOLDED CASE CIRCUIT BREAKER

Type	Poles	Rated Insulation Voltage (Ui)	IEC 60947-2		Rated Current	Base Ambient Temperature	Weight
			Icu/Ics [kA]	230V			
SX400	2 3	690 V	50/25	36/18	200/225/250/ 300/350/400 Adjustable A	40 °C	4.7 kg
FX400	2 3						4.7 kg
	2		5.4 kg				
	3		5.4 kg				



ACCESSORIES			
Part	Size	Qty	
		2P	3P
Phase separator	-	2	4
Terminal screw/bolt	M10x30	6	6
Mounting screw	M6x45	4	4
Assistant handle	-	-	-
Interior accessories	AL, AUX, SHT, UVT		

[\*] FRONT PLATE CUTOUT.  
 -THESE DIMENSIONS THE HEIGHT OF FRONT PLATE FROM BASE OF CASE TO COVER IS 103mm.  
 -CLEARANCE 1mm ON EACH SIDE OF HANDLE.

(Reference 33059397, 33059417) .  
 \*REMARK  
 -DIMENSION UNIT = Millimeter (mm).

09/07/20 O. SITTICHAJ / Ch. Chantidom / M. Somkiat / S. Sugai

DWN. S. CHAIAMPOL	03/03/17	PROJECTION	TITLE	REV.
CHKD. J. Imdee		SCALE	DIMENSION OF SX400, FX400	01
APPD. Z. Sokiguch		NTS.		SH.
HITT WORKS DWG. No.			4HTN000983	01
<b>HITACHI</b> Hitachi Industrial Technology (Thailand), Ltd.				01