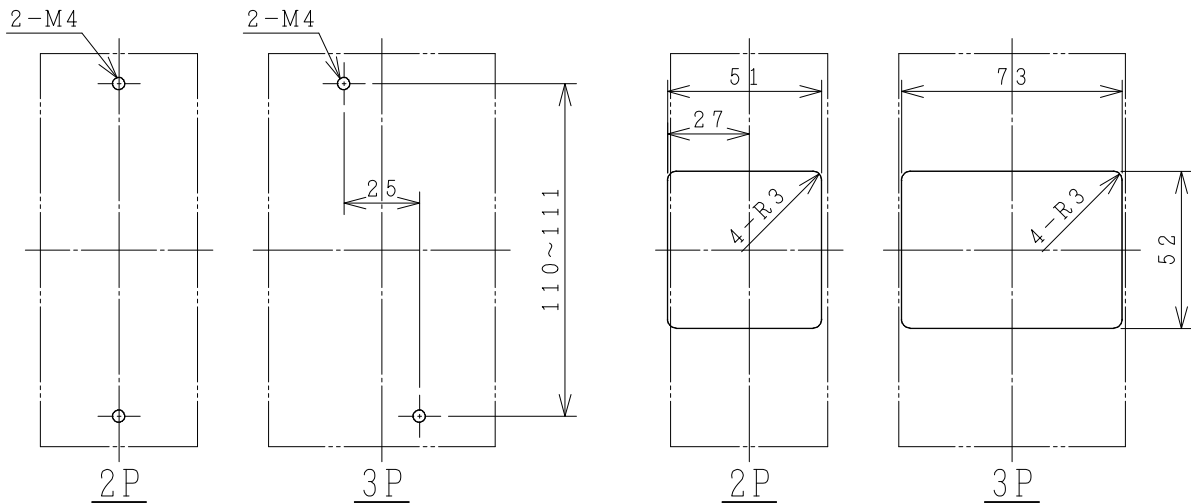
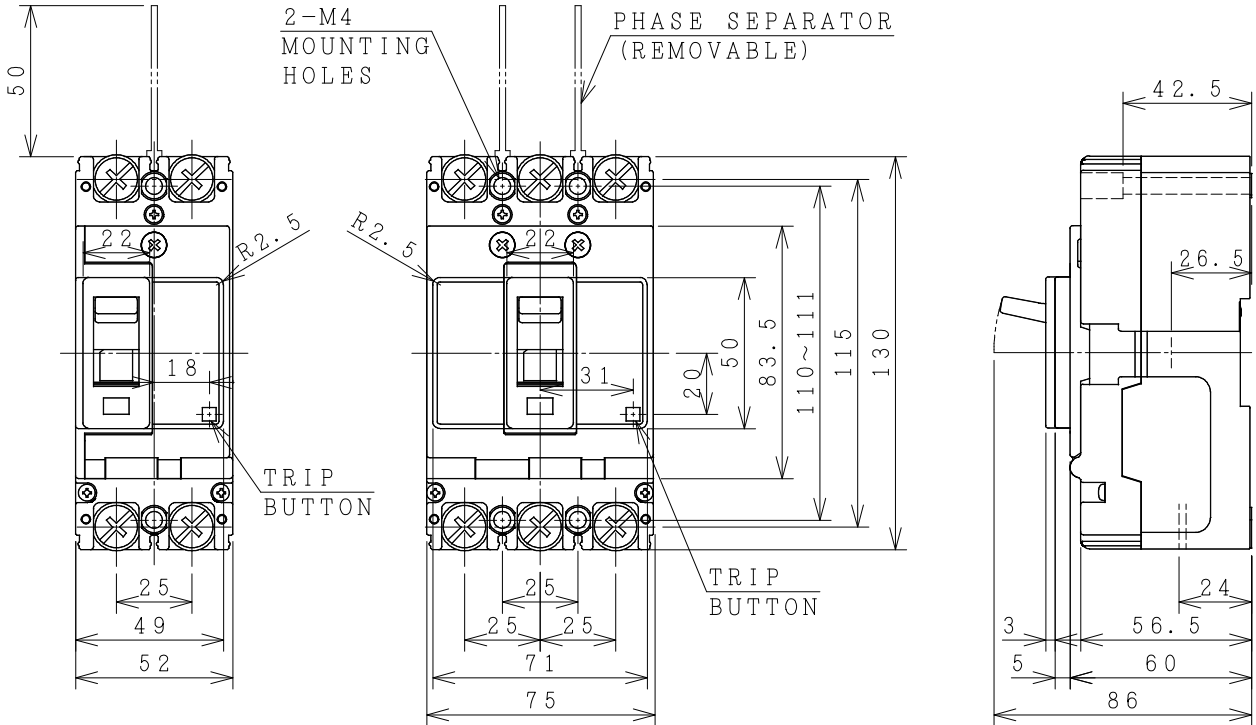


# HITACHI MOLDED CASE CIRCUIT BREAKER

Type	Poles	Rated Insulation Voltage (Ui)	IEC 60947-2 Icu/Ics [kA]		Rated Current	Base Ambient Temperature	Weight
			230V	400V			
FXK125-SA	2	690 V	50/25	25/13	15 20 32 Δ 40 50 63 Δ 75 100 125 A	40 °C	0.47 kg
	3						0.65 kg



## DRILLING PLAN.

ACCESSORIES			
Part	Size	Qty	
		2P	3P
Phase separator	-	2	4
Terminal screw/bolt (50A or less)	M5x14	4	6
Terminal screw/bolt (60A or more)	M8x14	4	6
Mounting screw	M4x55	2	2
Assistant handle	-	-	-
Interior accessories	AL, AUX, SHT		

## FRONT PLATE CUTOUT.

THESE DIMENSIONS THE HEIGHT OF FRONT PLATE FROM BASE OF CASE TO COVER IS 68mm.  
-CLEARANCE 1mm ON EACH SIDE OF HANDLE.

Δ<sup>x2</sup> 24/06/20 O. SITTICHAJ / Ch. Chantakorn / M. Somkiat / S. Sugai

DWN. S. CHAIAMPOL	20/03/18	PROJECTION	TITLE
CHKD. J. Jantee			DIMENSION OF FXK125-SA
APPD. C. Krathisak		SCALE NTS.	
			HITT WORKS DWG. No.
<b>HITACHI</b> Hitachi Industrial Technology (Thailand), Ltd.			4HTN001166
			REV.
			01
			SH.
			01
			01

(Reference 43071054R01).

※REMARK

-DIMENSION UNIT = Millimeter (mm).