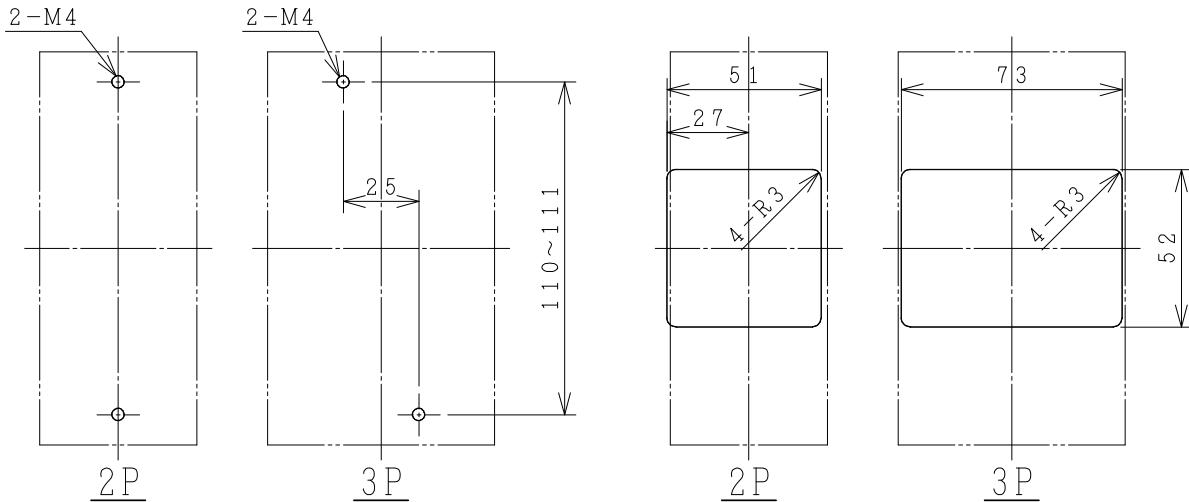
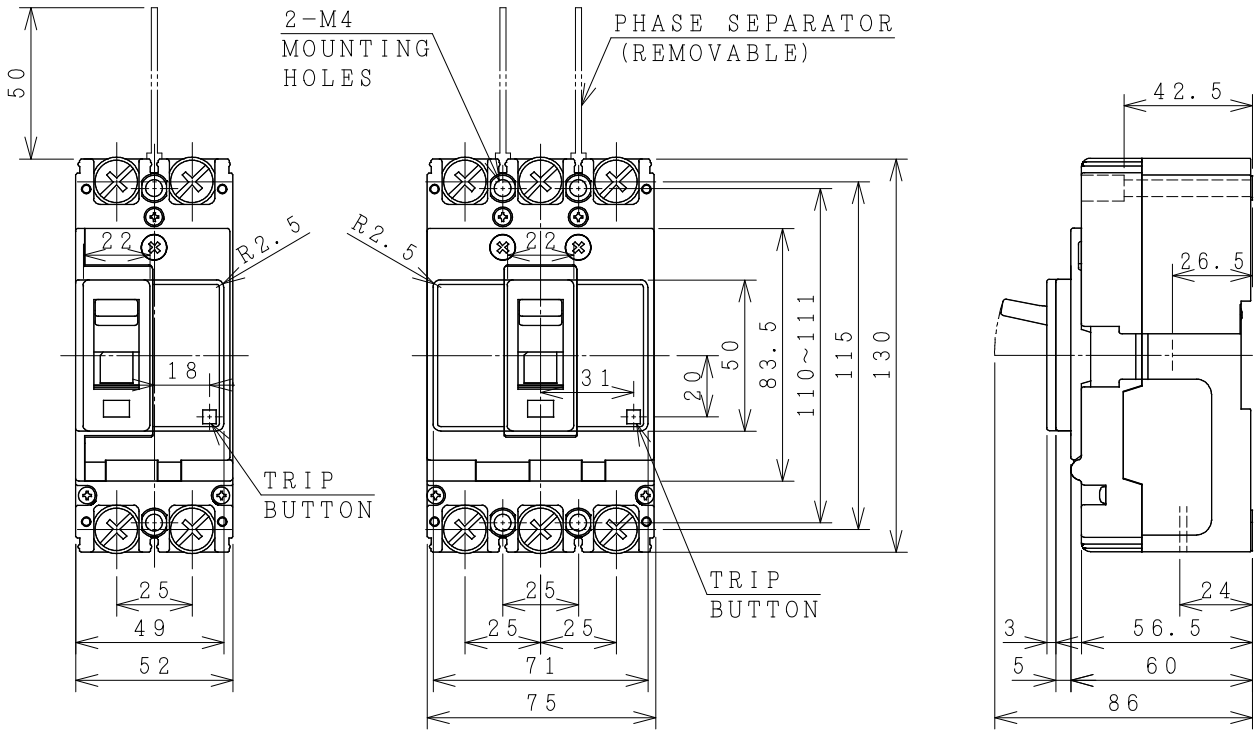


HITACHI MOLDED CASE CIRCUIT BREAKER

Type	Poles	Rated Insulation Voltage (Ui)	IEC 60947-2 Icu/Ics [kA]		Rated Current	Base Ambient Temperature	Weight
			230V	400V			
SXK32	2	690 V	15/8	7.5/4	3 5 10 15 20 32 A	40 °C	0.47 kg
	3						0.65 kg
SXK63	2	690 V	15/8	7.5/4	5 10 15 20 32 40 50 63 A	40 °C	0.47 kg
	3						0.65 kg



DRILLING PLAN.

ACCESSORIES			
Part	Size	Qty	
		2P	3P
Phase separator	-	2	4
Terminal screw/bolt (50A or less)	M5x14	4	6
Terminal screw/bolt (60A or more)	M8x14	4	6
Mounting screw	M4x55	2	2
Assistant handle	-	-	-
Interior accessories	AL, AUX, SHT		

FRONT PLATE CUTOUT.

THESE DIMENSIONS THE HEIGHT OF FRONT PLATE FROM BASE OF CASE TO COVER IS 68mm.
-CLEARANCE 1mm ON EACH SIDE OF HANDLE.

BWN. O. SITTICHAJ	11/06/20	PROJECTION	TITLE
CHKD. Ch. Chantana M. Sankhal	S	SCALE NTS.	DIMENSION OF SXK32, SXK63
APPD. S. Sayai			
HITACHI Hitachi Industrial Technology (Thailand), Ltd.			4HTN001256
			REV.
			00
			SH.
			01
			01

REMARK

- DIMENSION UNIT = Millimeter (mm).
- REFERENCE DWG NO. 33059394.