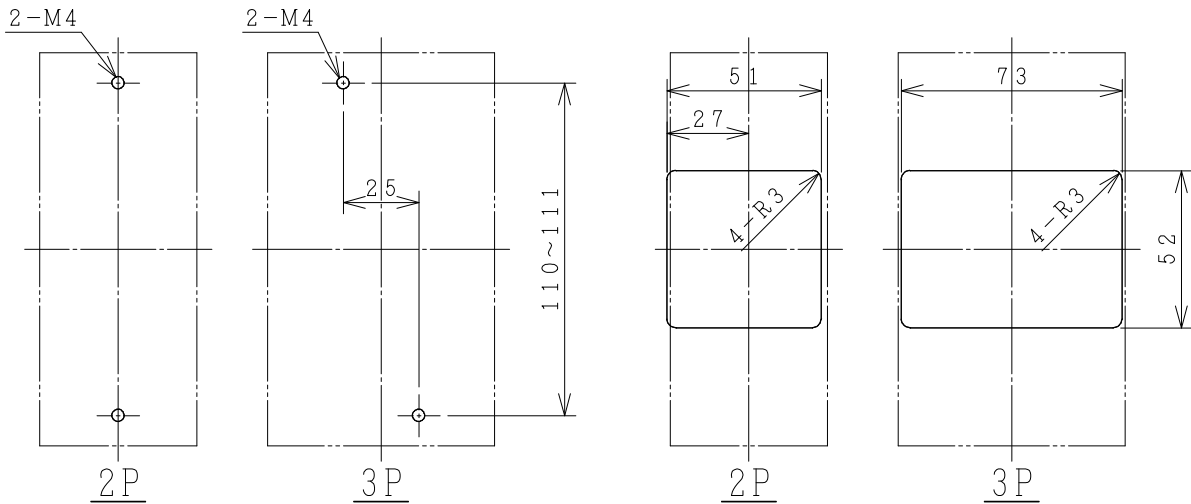
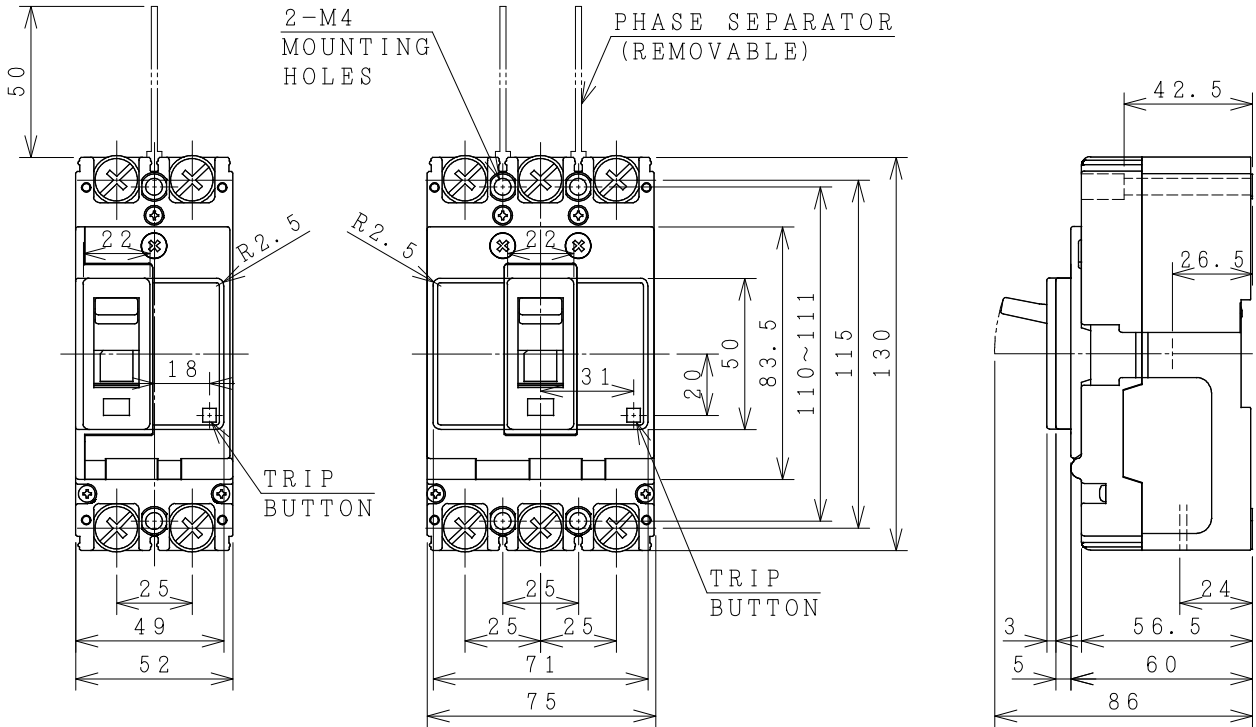


# HITACHI MOLDED CASE CIRCUIT BREAKER

Type	Poles	Rated Insulation Voltage (Ui)	IEC 60947-2 Icu/Ics [kA]		Rated Current	Base Ambient Temperature	Weight
			230V	400V			
SXX125-SA	2	690 V	35/18	10/5	15 20 32 40	40 °C	0.47 kg
	3				50 63 75 100 125 A		0.65 kg



DRILLING PLAN.

ACCESSORIES			
Part	Size	Qty	
		2P	3P
Phase separator	-	2	4
Terminal screw/bolt (50A or less)	M5x14	4	6
Terminal screw/bolt (60A or more)	M8x14	4	6
Mounting screw	M4x55	2	2
Assistant handle	-	-	-
Interior accessories	AL, AUX, SHT		

FRONT PLATE CUTOUT.

THESE DIMENSIONS THE HEIGHT OF FRONT PLATE FROM BASE OF CASE TO COVER IS 68mm.  
-CLEARANCE 1mm ON EACH SIDE OF HANDLE.

BWN. O. SITTICHAJ	12/06/20	PROJECTION	TITLE
CHKD. Ch. Chantana M. Sankhal	S	SCALE NTS.	DIMENSION OF SXX125-SA
APPD. S. Saeng			
<b>HITACHI</b> Hitachi Industrial Technology (Thailand), Ltd.			REV.
			00
4HTN001258			SH.
			01
			01

(Reference DWG NO. 33059395).

\*REMARK

-DIMENSION UNIT = Millimeter (mm).