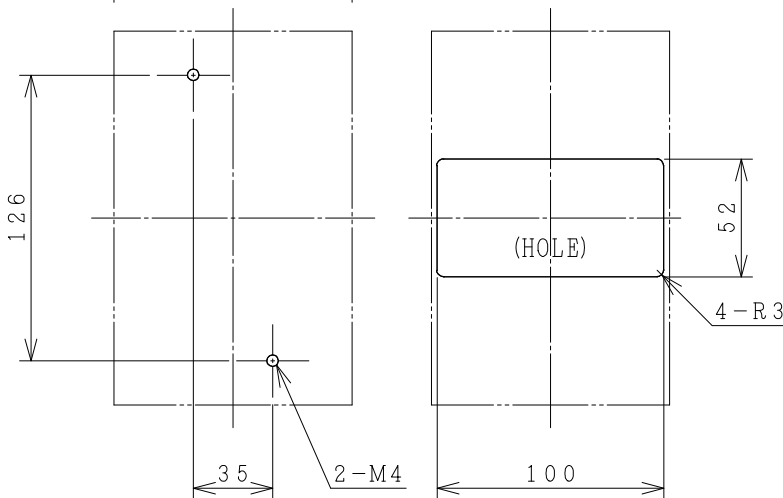
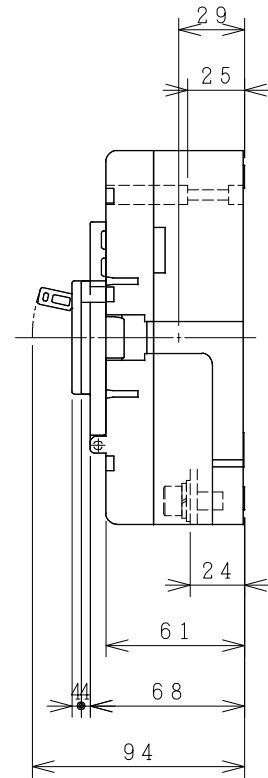
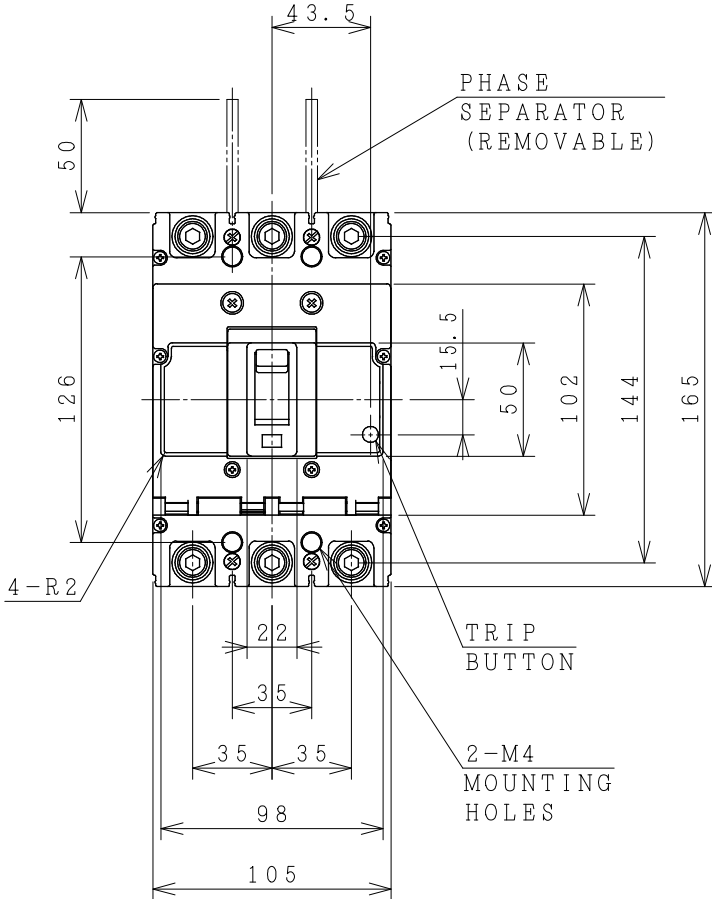


# HITACHI MOLDED CASE CIRCUIT BREAKER

Type	Poles	Rated Insulation Voltage (Ui)	IEC 60947-2 Icu/Ics [kA]		Rated Current	Base Ambient Temperature	Weight
			230V	400V			
SXX250-C	2	690 V	35/18	15/8	250 A	40 °C	1.6 kg
	3						



DRILLING PLAN.

ACCESSORIES			
Part	Size	Q'ty	
		2P	3P
Phase separator	-	2	4
Terminal screw/bolt	M8x18	4	6
Mounting screw	M4x40	2	2
Assistant handle	-	-	-
Interior accessories	AL, AUX, SHT		

**FRONT PLATE CUTOUT.**  
 -THESE DIMENSIONS THE HEIGHT OF FRONT PLATE FROM BASE OF CASE TO COVER IS 68mm.  
 -CLEARANCE 1mm ON EACH SIDE OF HANDLE.

(Reference DWG NO. 33059396)  
 REMARK  
 -DIMENSION UNIT = Millimeter (mm).

DWN. O. SITTICHAJ 11/06/20	PROJECTION	TITLE	DIMENSIONS OF SXX250-C
CHKD. Ch. Chantana M. Sankhal	SCALE		
APPD. S. Saeng	NTS.		
HITT WORKS DWG. No.			REV.
HITACHI Hitachi Industrial Technology (Thailand), Ltd.			00
4HTN001259			SH.
			01
			01