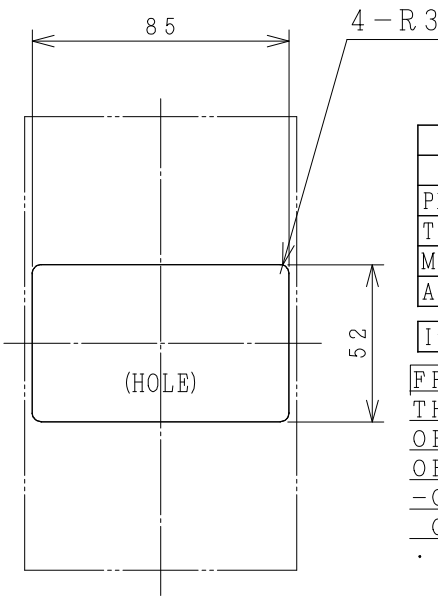
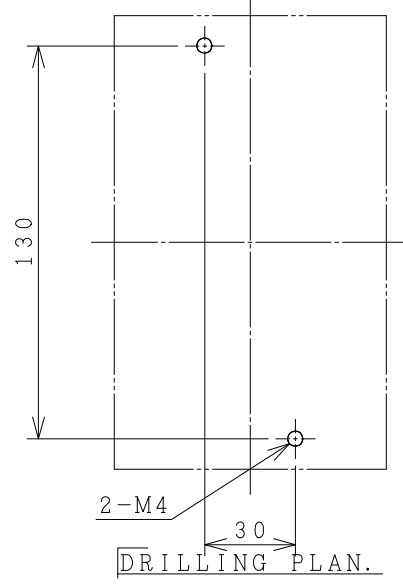
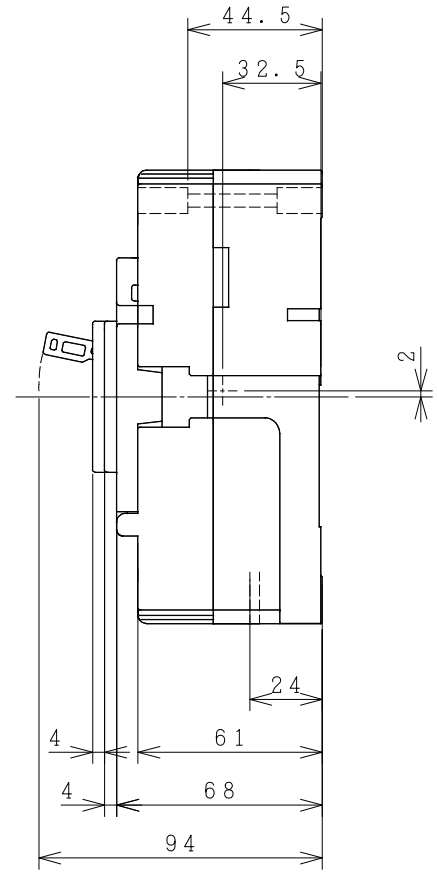
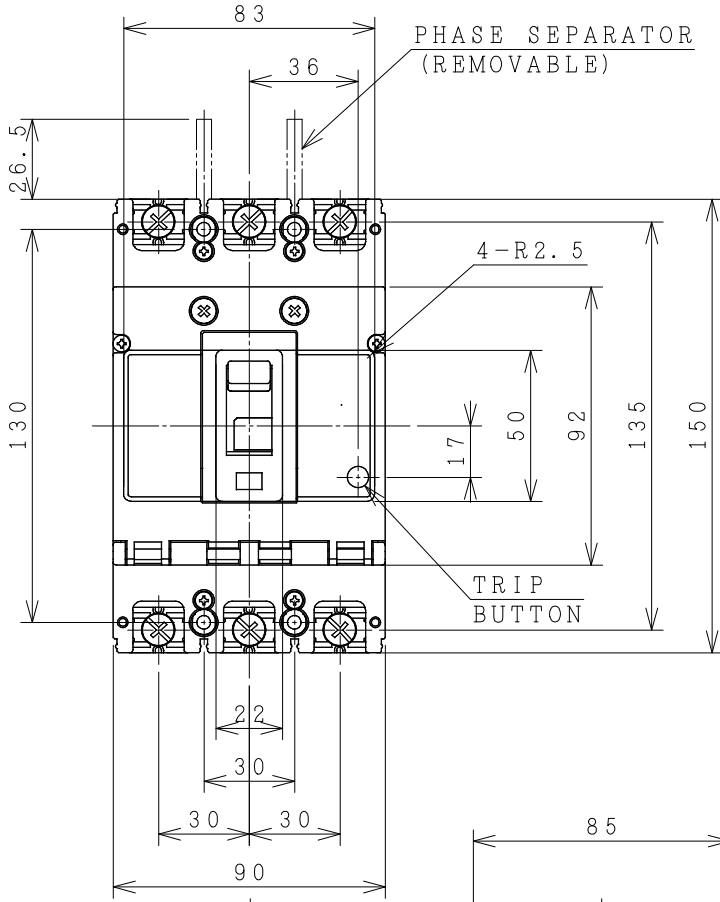


HITACHI MOLDED CASE CIRCUIT BREAKER

Type	Poles	Rated Insulation Voltage (Ui)	IEC 60947-2		Rated Current	Base Ambient Temperature	Weight
			Icu/Ics [kA]	230V			
FXK125-M	3	690 V	70/70	36/36	15 20 32 40	40 °C	1.1 kg
					50 63 75 100		
					125 A		



ACCESSORIES			
Part	Size		Q'ty
	15~50 A	63~125 A	
Phase separator	-	-	4
Terminal screw/bolt	M6x14	M8x14	6
Mounting screw	M4x55	M4x55	2
Assistant handle	-	-	-

Interior accessories AL, AUX, SHT

FRONT PLATE CUTOUT.
 THESE DIMENSIONS THE HEIGHT OF FRONT PLATE FROM BASE OF CASE TO COVER IS 68mm.
 -CLEARANCE 1mm ON EACH SIDE OF HANDLE.

※REMARK
 -DIMENSION UNIT = Millimeter (mm).
 Reference DWG NO. 33059410.

DWN. O. SITTICHAJ	22/06/20	PROJECTION	TITLE
CHKD. Ch. Chantana		SCALE	DIMENSION OF FXH125-M
APPD. M. Sankhal		NTS.	
HITACHI Hitachi Industrial Technology (Thailand), Ltd.			HITT WORKS DWG. No.
			4HTN001261
			REV.
			00
			SH.
			01
			01