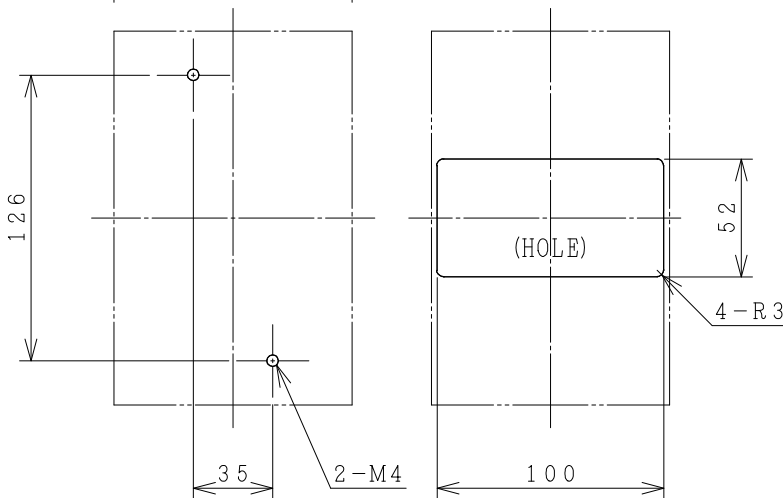
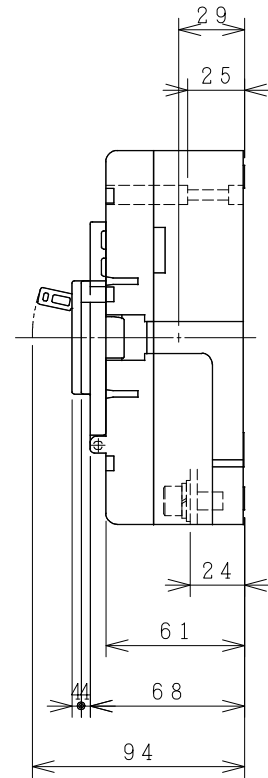
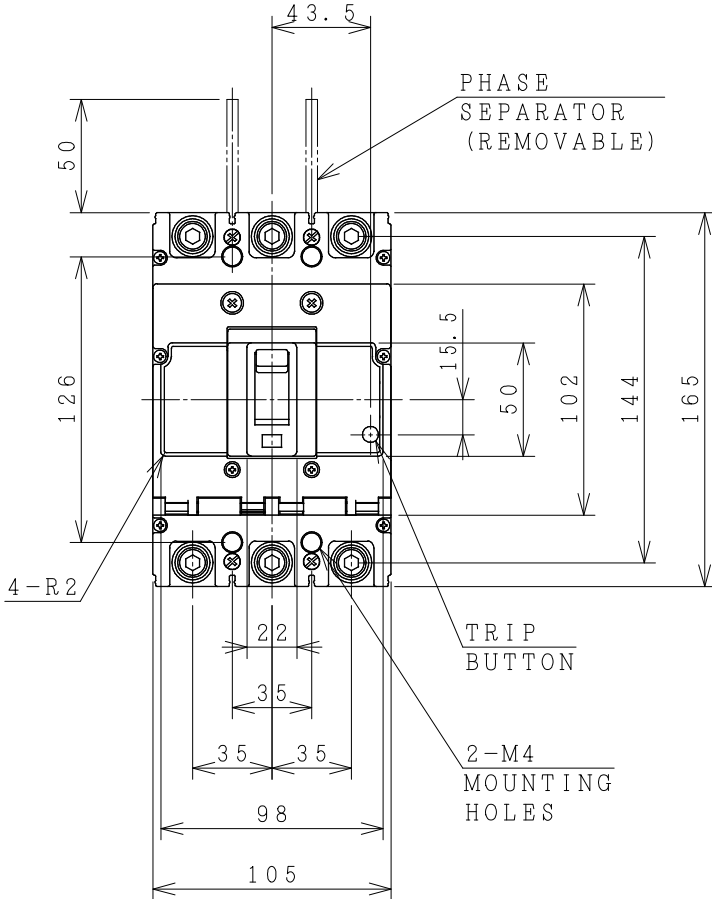


HITACHI MOLDED CASE CIRCUIT BREAKER

Type	Poles	Rated Insulation Voltage (Ui)	IEC 60947-2 Icu/Ics [kA]		Rated Current	Base Ambient Temperature	Weight
			230V	400V			
FXK250-M	2	690 V	70/70	36/36	125 150 175	40 °C	1.6 kg
	3				200 225 250 A		



DRILLING PLAN.

ACCESSORIES			
Part	Size	Q'ty	
		2P	3P
Phase separator	-	2	4
Terminal screw/bolt	M8x18	4	6
Mounting screw	M4x40	2	2
Assistant handle	-	-	-
Interior accessories	AL, AUX, SHT		

FRONT PLATE CUTOUT.
 -THESE DIMENSIONS THE HEIGHT OF FRONT PLATE FROM BASE OF CASE TO COVER IS 68mm.
 -CLEARANCE 1mm ON EACH SIDE OF HANDLE.

REMARK
 -DIMENSION UNIT = Millimeter (mm).
 -Reference DWG NO. 43064066.

DWN. O. SITTICHAJ 24/06/20	PROJECTION	TITLE	REV.
CHKD. Ch. Chantana M. Sankat	SCALE NTS.	DIMENSIONS OF FXK250-M	00
APPD. S. Suga		HITT WORKS DWG. No.	SH.
HITACHI Hitachi Industrial Technology (Thailand), Ltd.			01
			01

4HTN001262