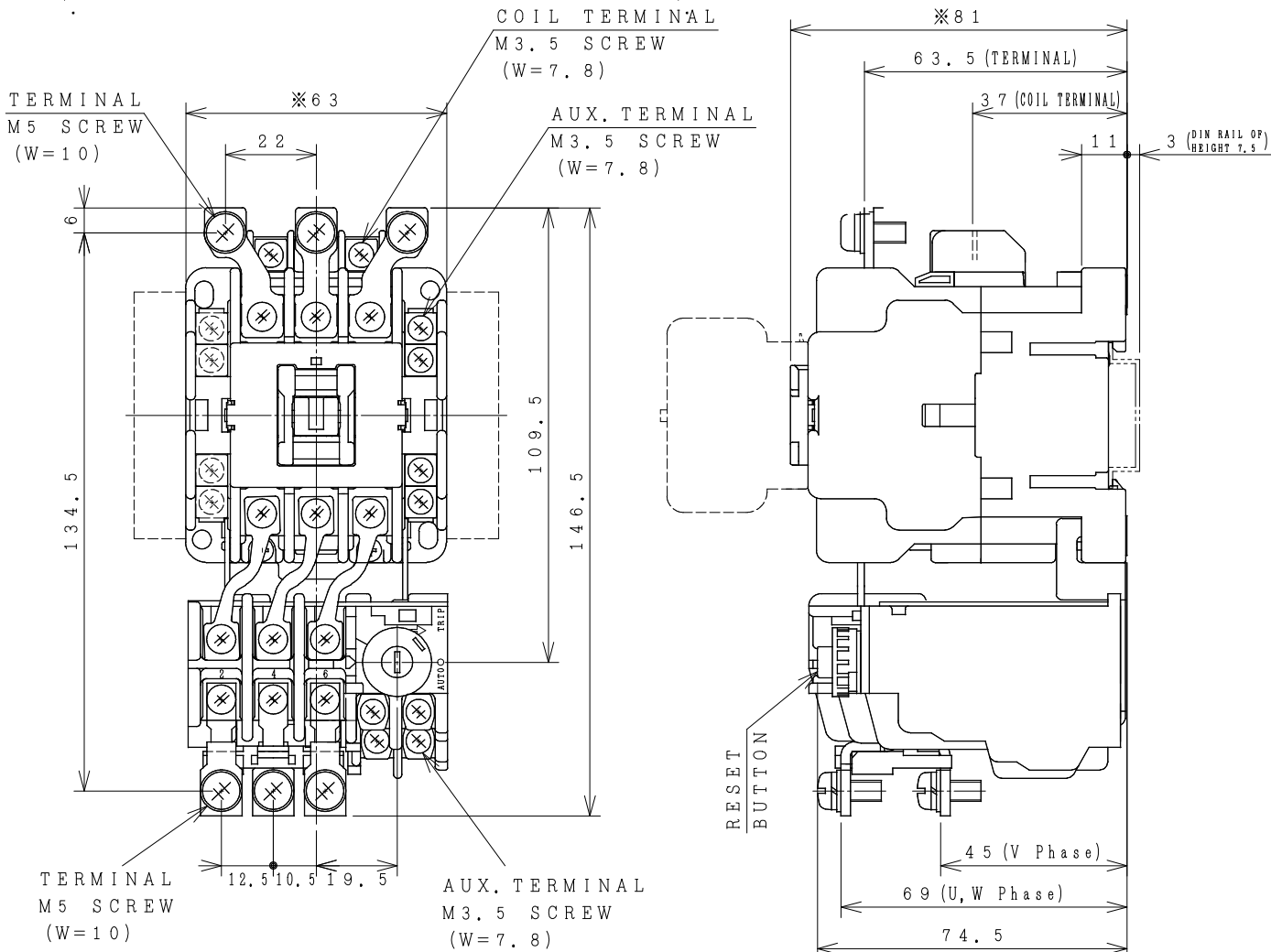


HITACHI ELECTROMAGNETIC SWITCH

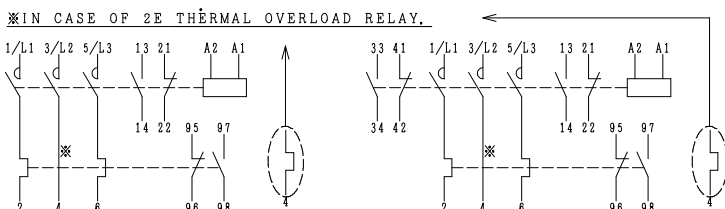
Type	Rated insulation voltage (Ui)	Max. rated capacity of motor			Rated thermal current (AC1 = 1th)	Applicable standard	Aux. Contact	Weight
HS25-T	AC 690 V	240V	7.5kW	27A	35 A	IEC 60947-4-1	1a1b or 2a2b	0.63 kg
HS25-TK		440V	11kW	26A				

※WITH AUX. CONTACT SIDE ON UNIT = 88mm.

※WITH AUX. CONTACT HEAD ON UNIT = 112mm.



OUTLINE DIMENSIONS.



AUX. CONTACTS: 1a1b
 CONTACTS ARRANGEMENT.
 (Reference 43067248R04).

- ※REMARK
 - DIMENSION UNIT = Millimeter (mm).
 - (a) = AUX. CONTACT NORMALLY OPENED.
 - (b) = AUX. CONTACT NORMALLY CLOSED.

MOUNTING HOLES.

- 54 x 56
- 54 x 60

ALSO POSSIBLE.
 (W) : WIDTH OF TERMINAL.

DWN. O. SITTICHAJ 11/07/16	PROJECTION	TITLE
CHKD. <i>C. Kiatissak</i>	SCALE	DIMENSION OF HS25-T, TK
APPD. <i>T. Kiatissak</i>	NTS.	
HITACHI Hitachi Industrial Technology (Thailand), Ltd.		HITT WORKS DWG. No.
		4HTN000809
		REV.
		00
		SH.
		01
		01