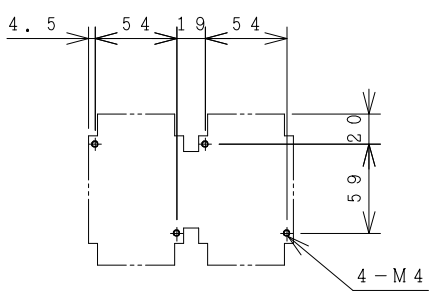
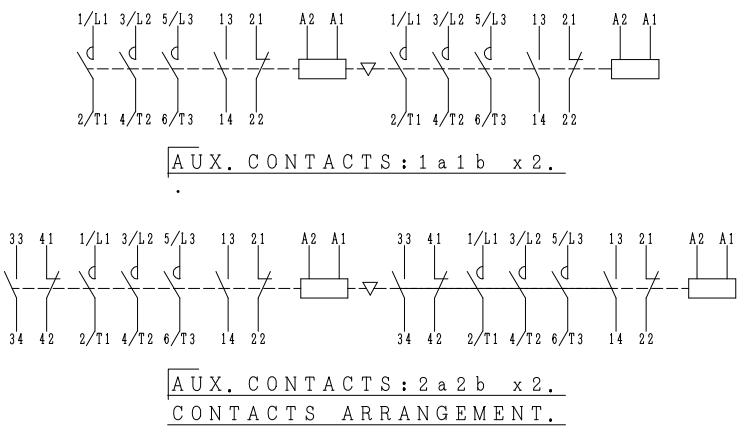
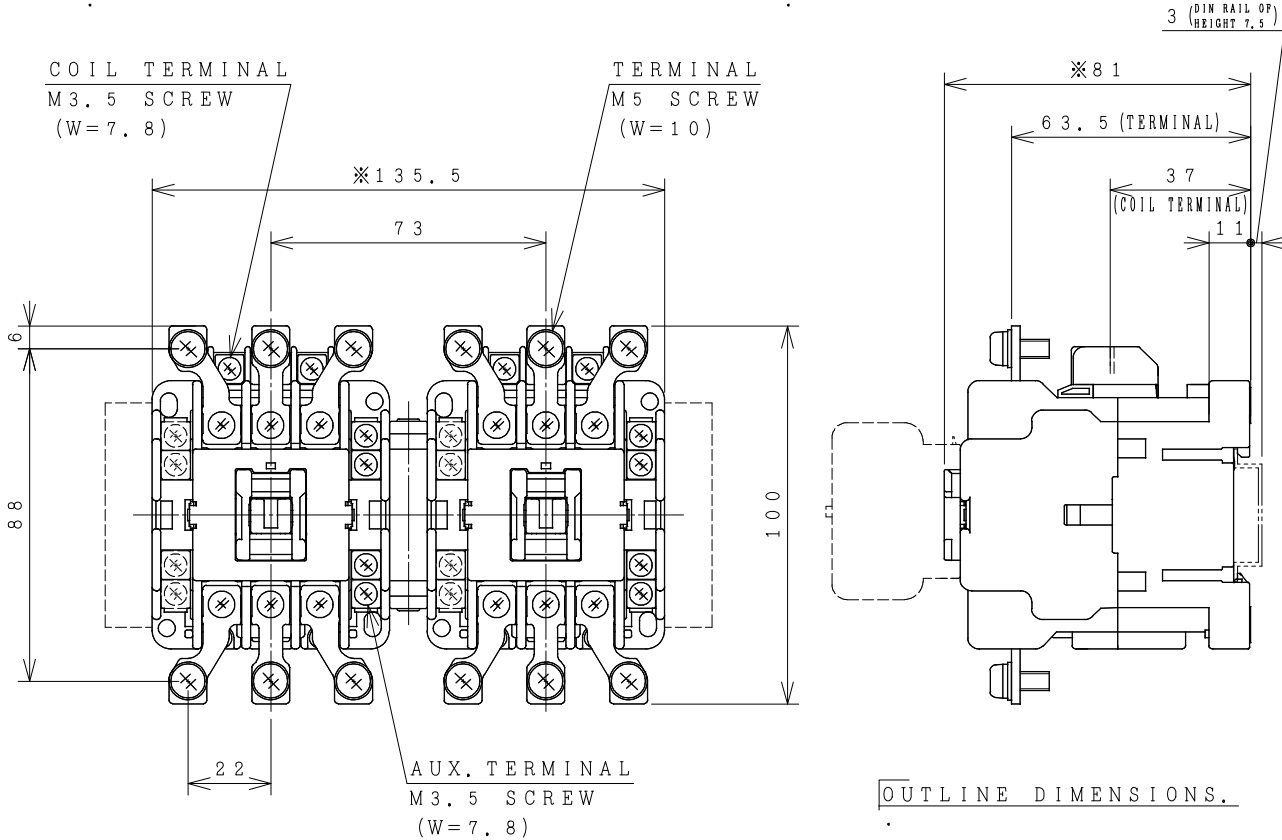


# HITACHI ELECTROMAGNETIC CONTACTOR

Type	Rated insulation voltage (Ui)	Max. rated capacity of motor			Rated thermal current (AC1 = Ith)	Applicable standard	Aux. Contact	Weight
		240V	7.5kW	27A				
HS25-R	AC 690 V	440V	11kW	26A	35 A	IEC 60947-4-1	1a1b x2 or 2a2b x2	0.96 kg

※WITH AUX. CONTACT SIDE ON UNIT = 160.5mm.

※WITH AUX. CONTACT HEAD ON UNIT = 112mm.



(Reference 43067253R02).

※REMARK

- DIMENSION UNIT = Millimeter (mm).
- (a) = AUX. CONTACT NORMALLY OPENED.
- (b) = AUX. CONTACT NORMALLY CLOSED.

DWN. O. SITTICHAJ 11/07/16	PROJECTION	TITLE
CHKD. <i>C. Kiatissak</i>	SCALE	DIMENSION OF HS25-R
APPD. <i>T. Kiatissak</i>	NTS.	
HITACHI Hitachi Industrial Technology (Thailand), Ltd.		HITT WORKS DWG. No.
		4HTN000810
		REV.
		00
		SH.
		01
		01