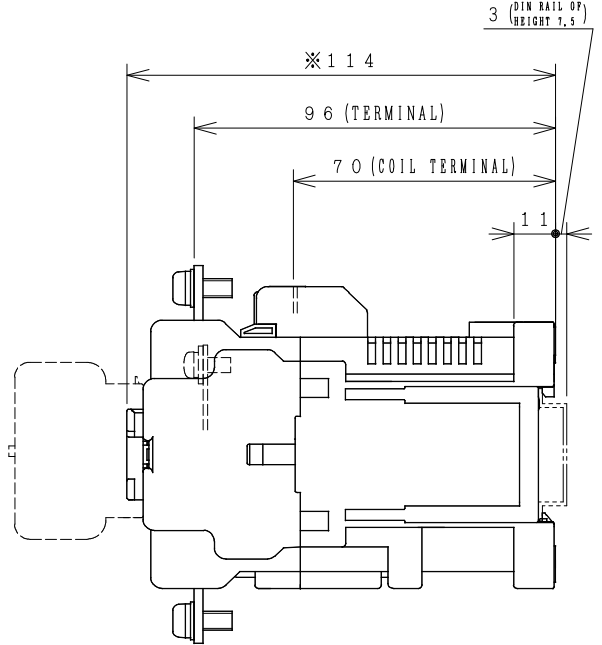
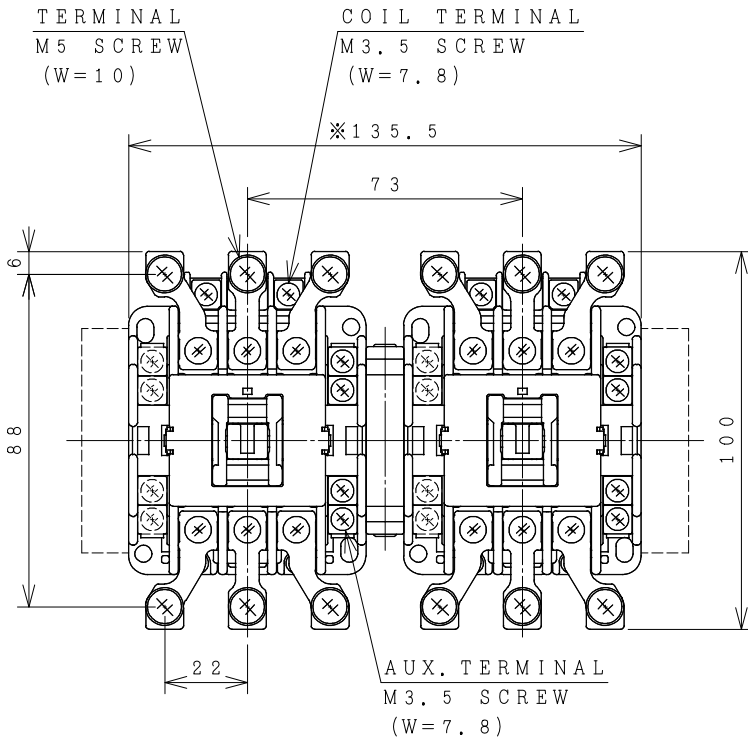


# HITACHI ELECTROMAGNETIC CONTACTOR

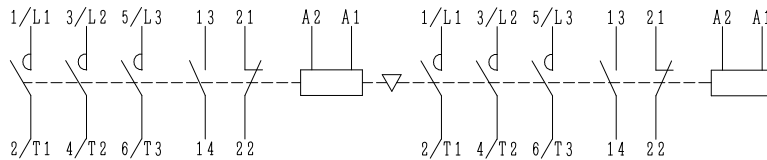
Type	Rated insulation voltage (Ui)	Max. rated capacity of motor			Rated thermal current (AC1 = Ith)	Applicable standard	Aux. Contact	Weight
		240V	7.5kW	27A				
HS25-RG	AC 690	440V	11kW	26A	35 A	IEC 60947-4-1	1a1b x2	1.5 kg
	V						2a2b x2	

※WITH AUX. CONTACT SIDE ON UNIT = 160.5mm.

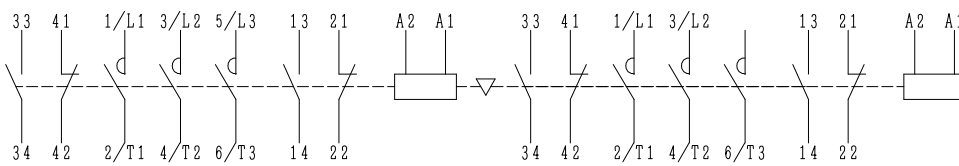
※WITH AUX. CONTACT HEAD ON UNIT = 145mm.



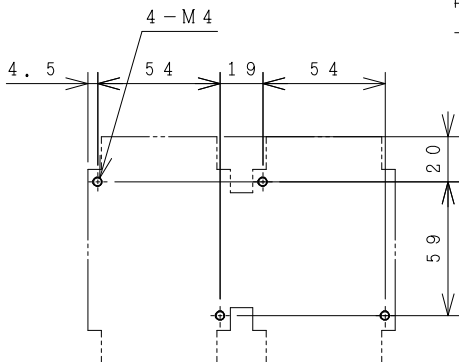
OUTLINE DIMENSIONS.



AUX. CONTACTS: 1 a 1 b x 2



AUX. CONTACTS: 2 a 2 b x 2  
CONTACTS ARRANGEMENT.



MOUNTING HOLES.

(Reference 43068966R00).

※REMARK

- DIMENSION UNIT = Millimeter (mm).

- (a) = AUX. CONTACT NORMALLY OPENED.

- (b) = AUX. CONTACT NORMALLY CLOSED.

DWN. O. SITTICHAJ	05/07/16	PROJECTION	TITLE
CHKD. <i>C. Kiatissak</i>		SCALE	DIMENSION OF HS25-RG
APPD. <i>T. Kiatissak</i>		NTS.	
HITT WORKS DWG. No.			REV.
<b>HITACHI</b> Hitachi Industrial Technology (Thailand), Ltd.			00
			01
			01

(W=) : WIDTH OF TERMINAL.

4HTN000814