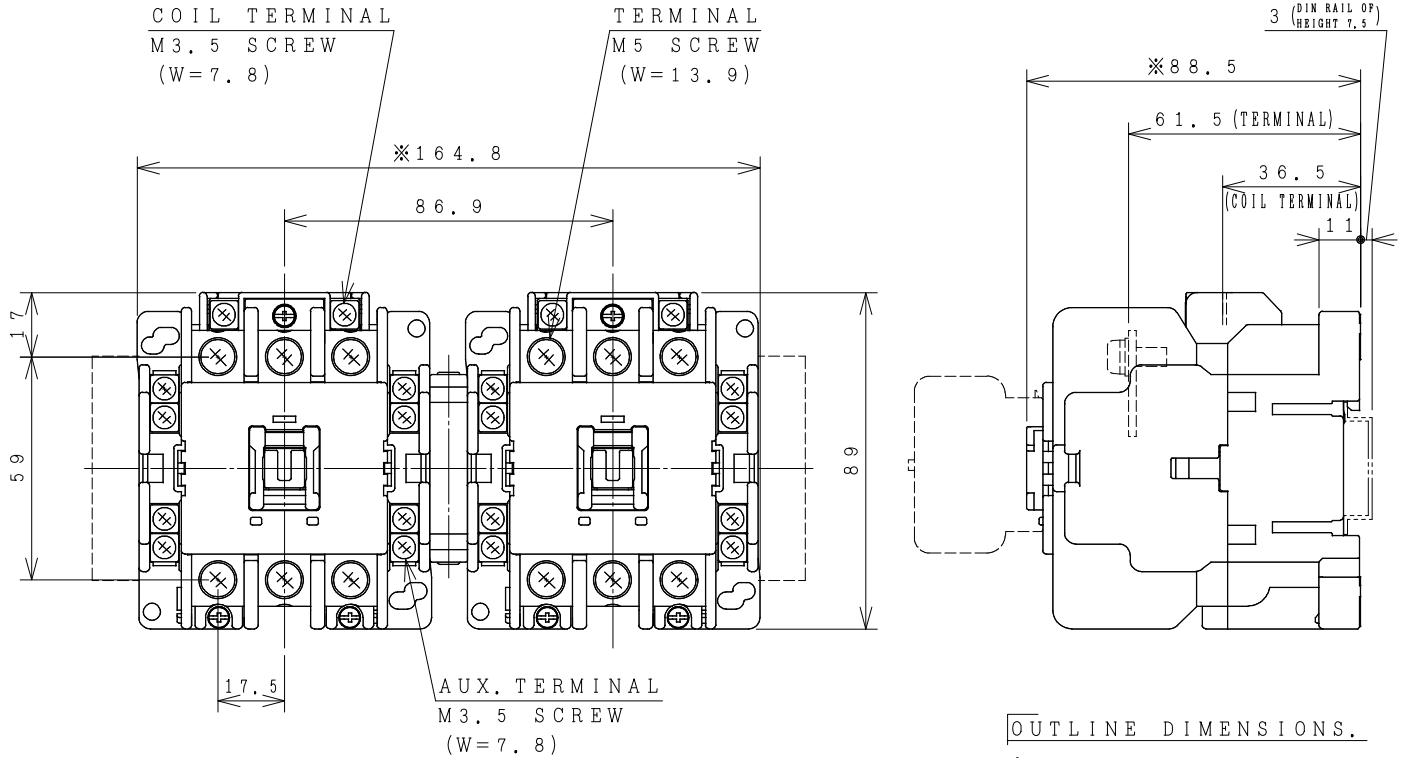


# HITACHI ELECTROMAGNETIC CONTACTOR

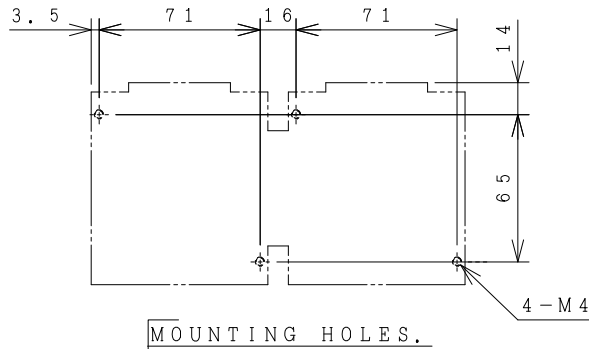
Type	Rated insulation voltage (Ui)	Max. rated capacity of motor			Rated thermal current (AC1 = Ith)	Applicable standard	Aux. Contact	Weight
		240V	11kW	40A				
HS35-R	AC 690 V	440V	18.5kW	40A	50 A	IEC 60947-4-1	2a2b x2	1.10 kg

※WITH AUX. CONTACT SIDE ON UNIT = 189mm.

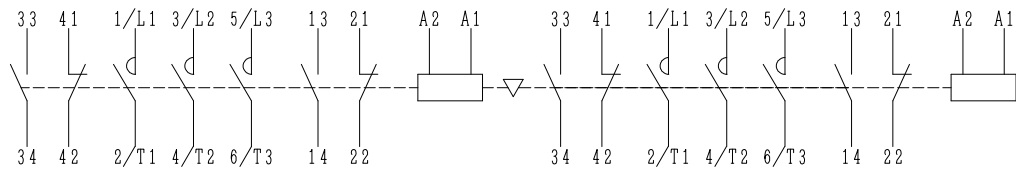
※WITH AUX. CONTACT HEAD ON UNIT = 120mm.



OUTLINE DIMENSIONS.



MOUNTING HOLES.



AUX. CONTACTS: 2a2b x2.  
CONTACTS ARRANGEMENT.

(Reference 43067254R02).

DWN. O. SITTICHAJ 09/08/16	PROJECTION	TITLE
CHKD. <i>C. Kiatissak</i>	SCALE	DIMENSION OF HS35-R
APPD. <i>T. Kiatissak</i>	NTS.	
HITT WORKS DWG. No.		REV.
<b>HITACHI</b> Hitachi Industrial Technology (Thailand), Ltd.		00
		SH.
		01
		01

(W=) : WIDTH OF TERMINAL.  
 ※REMARK  
 - DIMENSION UNIT = Millimeter (mm).  
 - (a) = AUX. CONTACT NORMALLY OPENED.  
 - (b) = AUX. CONTACT NORMALLY CLOSED.

4HTN000822