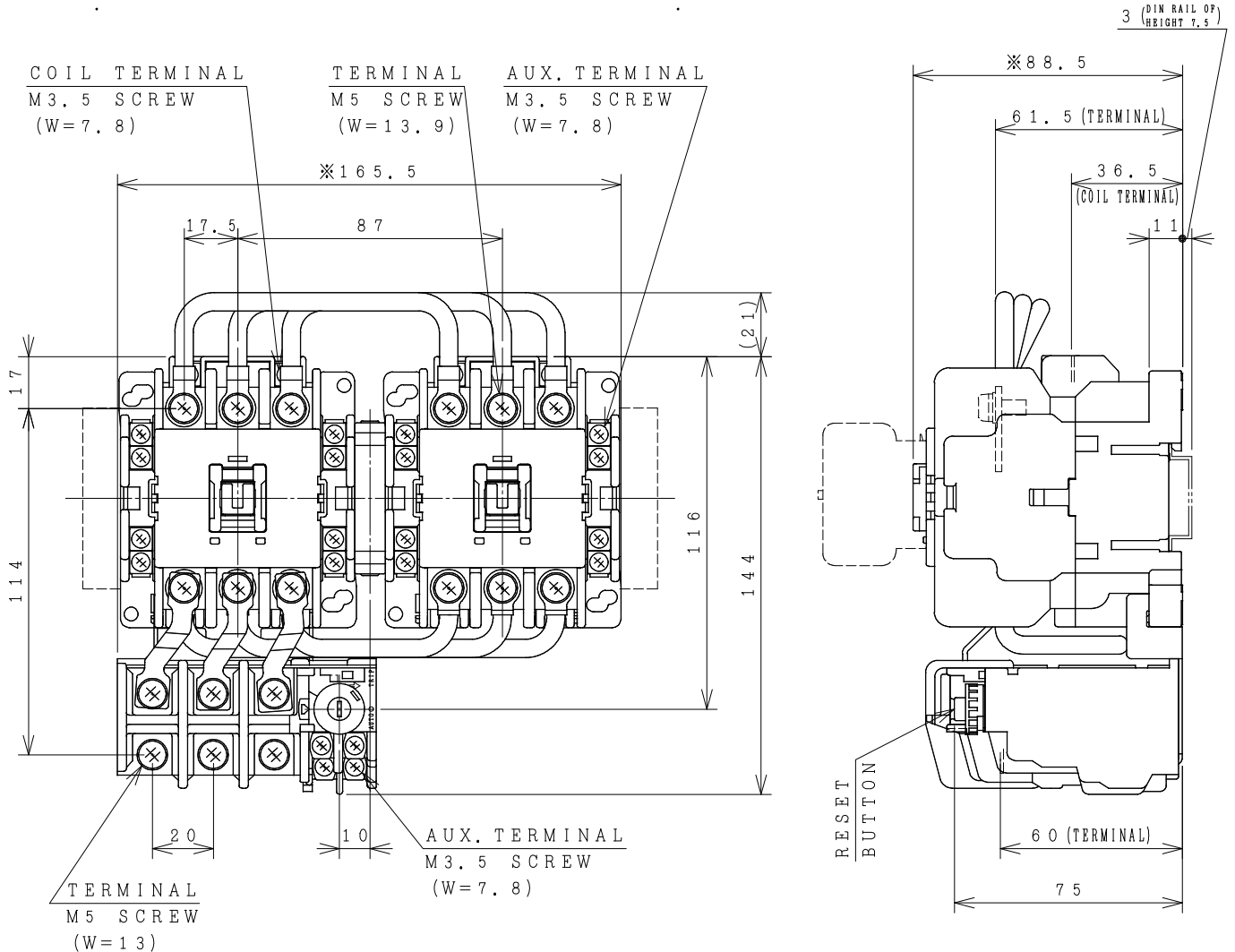


HITACHI ELECTROMAGNETIC SWITCH

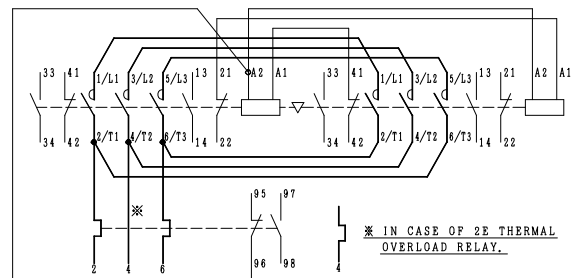
Type	Rated insulation voltage (Ui)	Max. rated capacity of motor			Rated thermal current (AC1 = Ith)	Applicable standard	Aux. Contact	Weight
		240V	11kW	40A				
HS35-RT	AC 690 V	240V	11kW	40A	50 A	IEC 60947-4-1	2a2b x2	1.58 kg
HS35-RTK		440V	18.5kW	40A				

※WITH AUX. CONTACT SIDE ON UNIT = 189mm.

※WITH AUX. CONTACT HEAD ON UNIT = 120mm.



OUTLINE DIMENSIONS.



CONTACTS ARRANGEMENT.

MOUNTING HOLES.

(W=) : WIDTH OF TERMINAL.

REMARK

- DIMENSION UNIT = Millimeter (mm).
- (a) = AUX. CONTACT NORMALLY OPENED.
- (b) = AUX. CONTACT NORMALLY CLOSED.

(Reference 43067259R07).

DWN. O. SITTICHAJ 18/08/16	PROJECTION	TITLE	DIMENSION OF HS35-RT, RTK
CHKD. <i>C. Kiattisak</i>	SCALE		
APPD. <i>T. Kijisudh</i>	NTS.		
HITACHI Hitachi Industrial Technology (Thailand), Ltd.			HITT WORKS DWG. No. 4HTN000823
			REV. 00 SH. 01 01