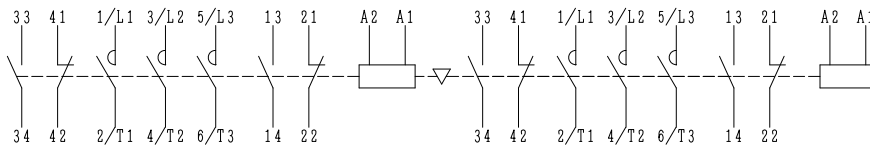
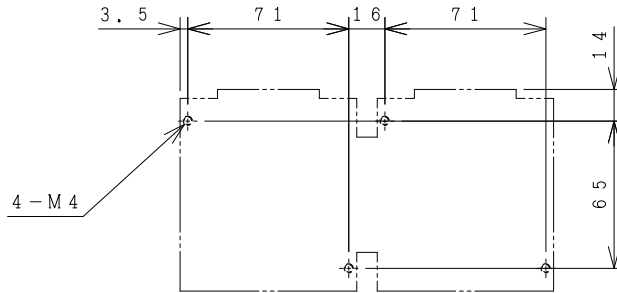
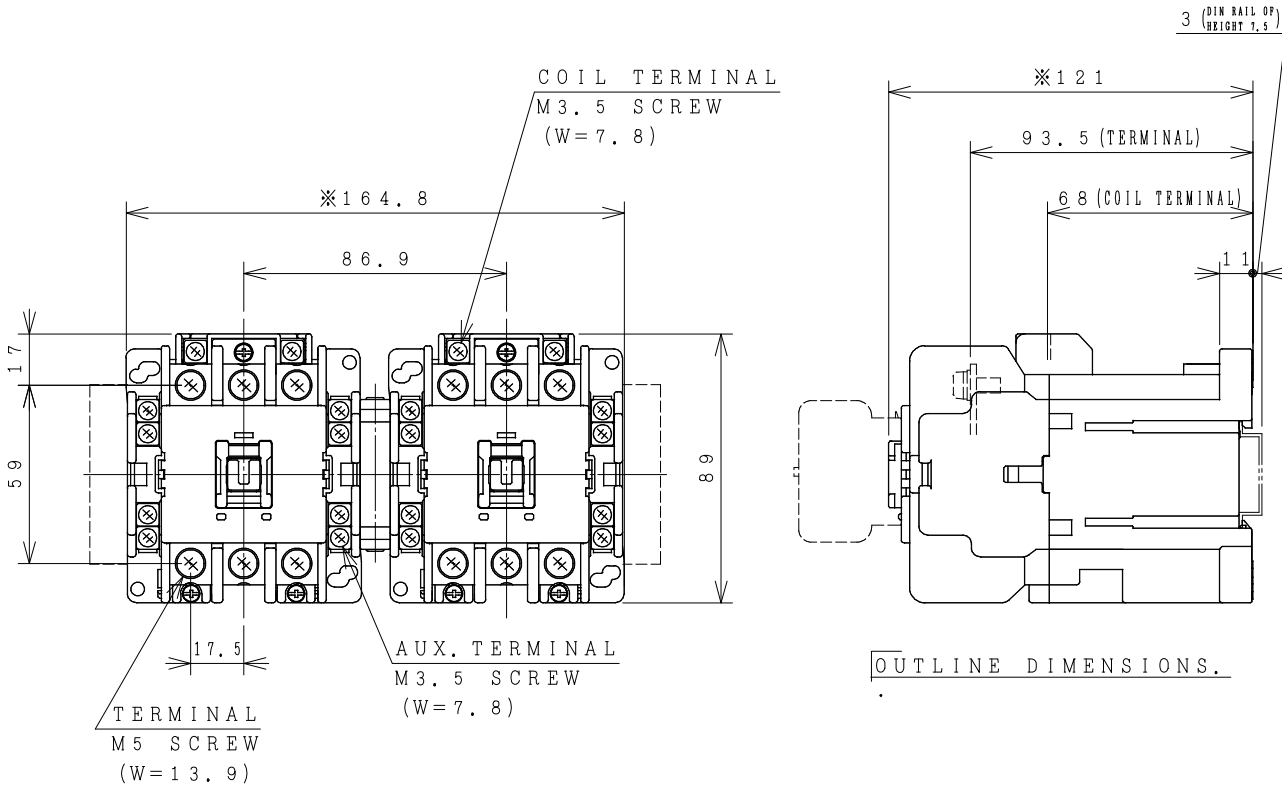


# HITACHI ELECTROMAGNETIC CONTACTOR

Type	Rated insulation voltage (Ui)	Max. rated capacity of motor			Rated thermal current (AC1 = Ith)	Applicable standard	Aux. Contact	Weight
		240V	11kW	40A				
HS35-RG	AC 690 V	440V	18.5kW	40A	50 A	IEC 60947-4-1	2a2b x2	2.1 kg

※WITH AUX. CONTACT SIDE ON UNIT = 189mm.

※WITH AUX. CONTACT HEAD ON UNIT = 152mm.



(W=) : WIDTH OF TERMINAL.

※REMARK

- DIMENSION UNIT = Millimeter (mm).
- (a) = AUX. CONTACT NORMALLY OPENED.
- (b) = AUX. CONTACT NORMALLY CLOSED.

(Reference 43068967R00).

DWN. O. SITTICHAJ 19/08/16 CHKD. <i>C. Kiatissak</i> APPD. <i>T. Kiatissak</i>	PROJECTION  SCALE NTS.	TITLE DIMENSION OF HS35-RG	HITT WORKS DWG. No. 4HTN000826	REV. 00 SH. 01 01
--	---------------------------------	----------------------------------	-----------------------------------	-------------------------------

**HITACHI**  
Hitachi Industrial Technology (Thailand), Ltd.