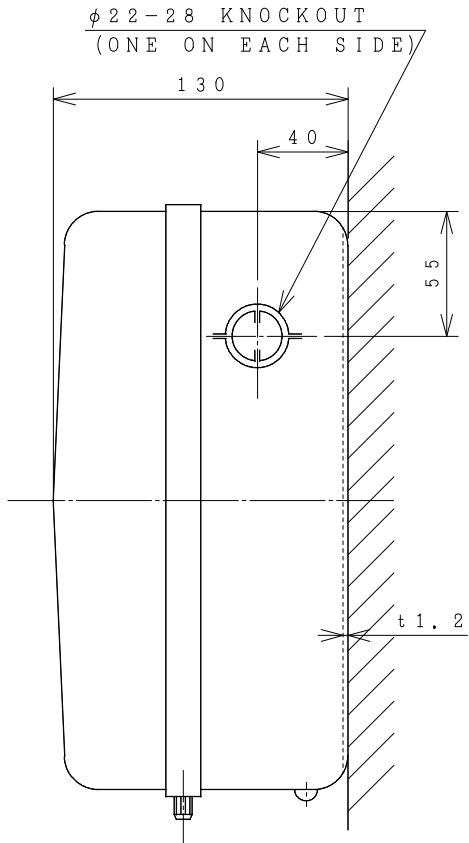
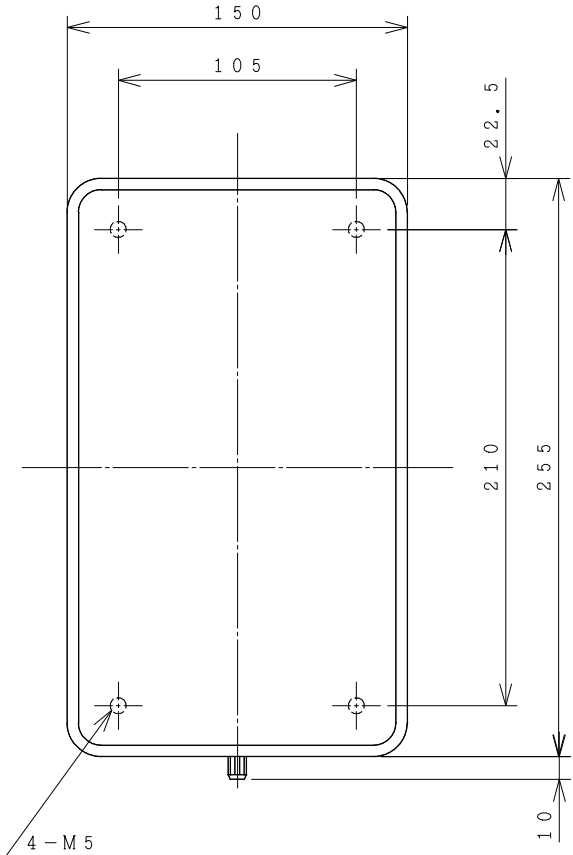
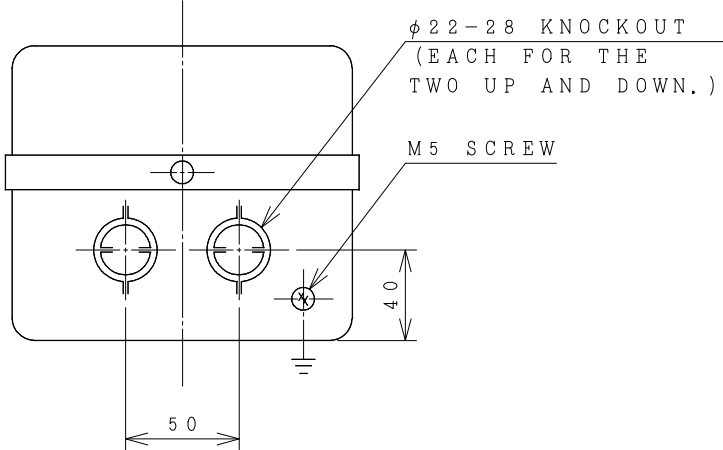


HITACHI ELECTROMAGNETIC SWITCH

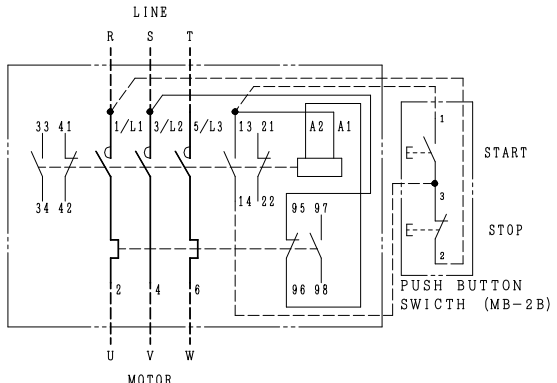
Type	Rated insulation voltage (Ui)	Max. rated capacity of motor			Rated thermal current (AC1 = Ith)	Applicable standard	Aux. Contact	Weight
		240V	11kW	40A				
SHS35-T	AC 690 V	440V	18.5kW	40A	44 A	IEC 60947-4-1	2a2b	2.8 kg
		240V	11kW	40A				



φ 22-28 KNOCKOUT
(ONE ON EACH SIDE)



OUTLINE DIMENSIONS.



CONTACTS ARRANGEMENT.

(Reference 43067530R01).

- ※REMARK
 - DIMENSION UNIT = Millimeter (mm).
 - (a) = AUX. CONTACT NORMALLY OPENED.
 - (b) = AUX. CONTACT NORMALLY CLOSED.

		TERMINAL SCREW	WIDTH OF TERMINAL
MAIN CIRCUIT	CONTACTOR	M5	13.9
	OVERLOAD RELAY	M5	13
OPERATION CIRCUIT	CONTACTOR	M3.5	7.8
	OVERLOAD RELAY	M3.5	7.8

DWN. O. SITTICHAJ 19/08/16	PROJECTION	TITLE
CHKD. <i>C. Kiatissak</i>	SCALE	DIMENSION OF SHS35-T
APPD. <i>T. Kiatissak</i>	NTS.	
HITT WORKS DWG. No.		REV.
HITACHI Hitachi Industrial Technology (Thailand), Ltd.		00
		01
		02
		03

4HTN000829