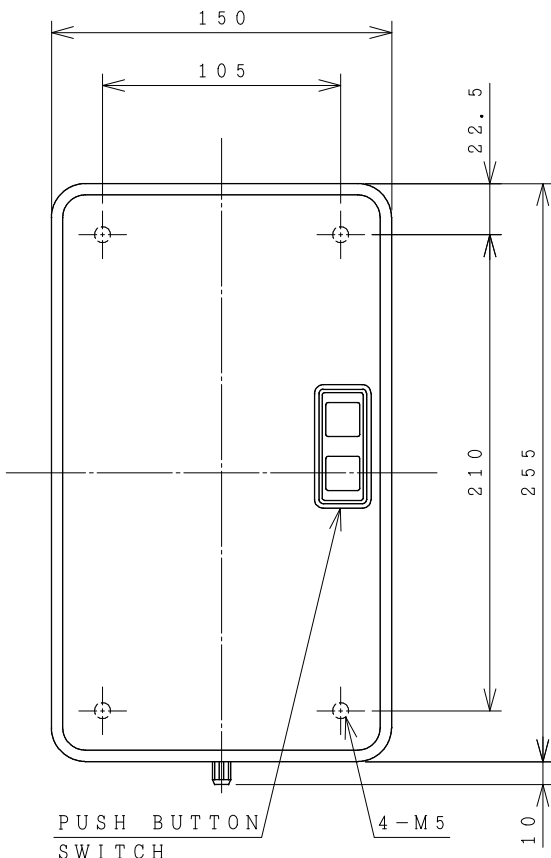


# HITACHI ELECTROMAGNETIC SWITCH

Type	Rated insulation voltage (Ui)	Max. rated capacity of motor			Rated thermal current (AC1 = Ith)	Applicable standard	Aux. Contact	Weight
		240V	11kW	40A				
SHS35-TB	AC 690 V	440V	18.5kW	40A	44 A	IEC 60947-4-1	2a2b	2.9 kg
		240V	11kW	40A				

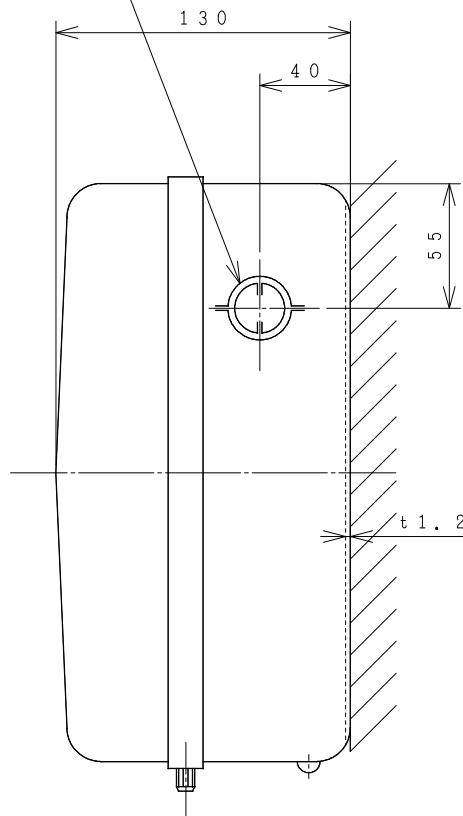
φ 22-28 KNOCKOUT  
(ONE ON EACH SIDE)



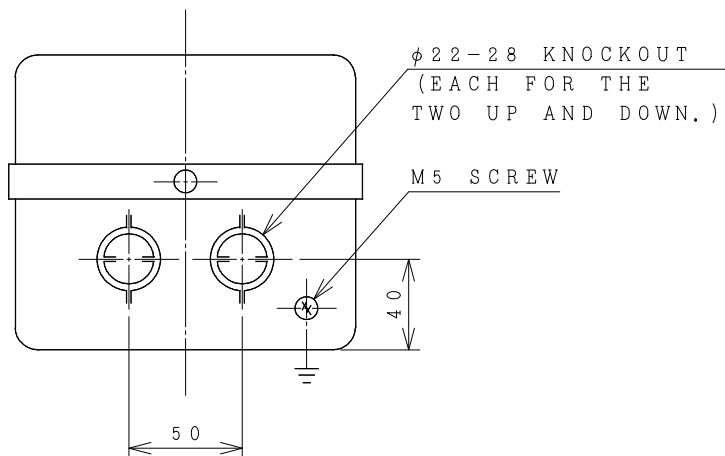
PUSH BUTTON SWITCH

4-M5

10



OUTLINE DIMENSIONS.

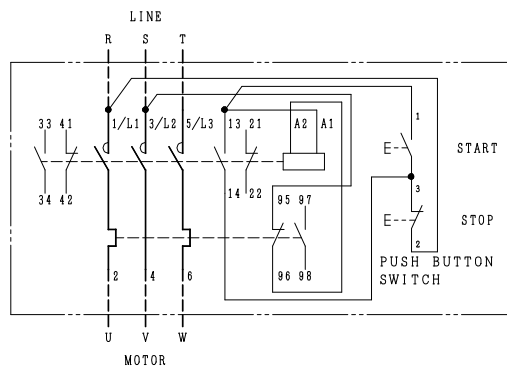


φ 22-28 KNOCKOUT  
(EACH FOR THE TWO UP AND DOWN.)

M5 SCREW

40

50



CONTACTS ARRANGEMENT.

(Reference 43068443R01).

※REMARK

- DIMENSION UNIT = Millimeter (mm).
- (a) = AUX. CONTACT NORMALLY OPENED.
- (b) = AUX. CONTACT NORMALLY CLOSED.

		TERMINAL SCREW	WIDTH OF TERMINAL
MAIN CIRCUIT	CONTACTOR	M5	13.9
	OVERLOAD RELAY	M5	13
OPERATION CIRCUIT	CONTACTOR	M3.5	7.8
	OVERLOAD RELAY	M3.5	7.8

DWN. O. SITTICHAJ	20/08/16	PROJECTION	TITLE
CHKD. <i>C. Kiattisak</i>		SCALE	DIMENSION OF SHS35-TB
APPD. <i>T. Kiatseub</i>		NTS.	
HITACHI Hitachi Industrial Technology (Thailand), Ltd.			HITT WORKS DWG. No. 4HTN000831
			REV. 00 SH. 01 01