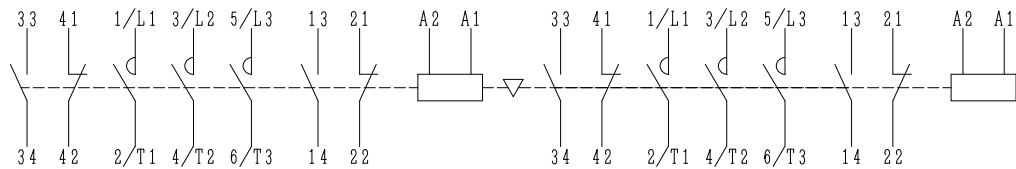
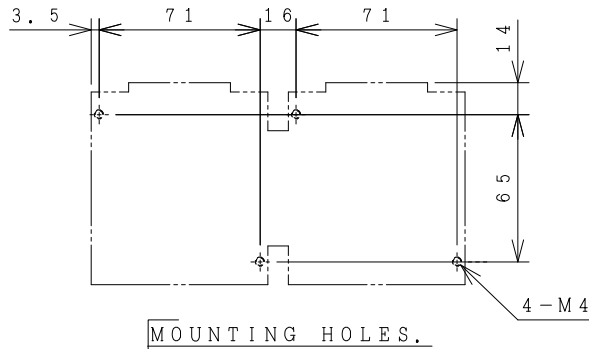
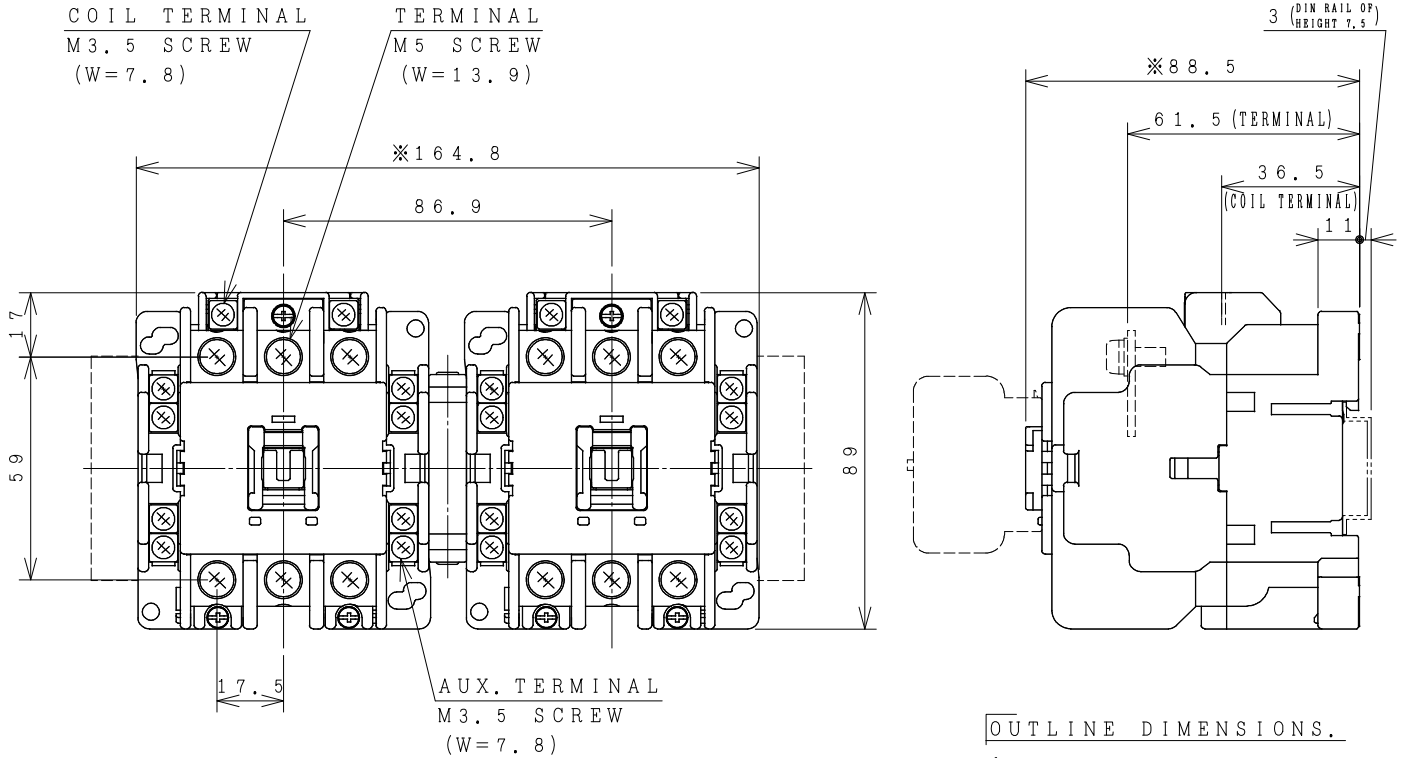


HITACHI ELECTROMAGNETIC CONTACTOR

Type	Rated insulation voltage (Ui)	Max. rated capacity of motor			Rated thermal current (AC1 = Ith)	Applicable standard	Aux. Contact	Weight
		240V	15kW	50A				
HS50-R	AC	440V	22kW	50A	70 A	IEC 60947-4-1	2a2b x2	1.10 kg
	690 V							

※WITH AUX. CONTACT SIDE ON UNIT = 189mm.

※WITH AUX. CONTACT HEAD ON UNIT = 120mm.



AUX. CONTACTS: 2a2b x2.
CONTACTS ARRANGEMENT.

(Reference 43067255R02).			
DWN.	O. SITTICHAJ	20/08/16	PROJECTION
CHKD.	<i>C. Kiatissak</i>		SCALE
APPD.	<i>T. Kiatissak</i>		NTS.
HITACHI Hitachi Industrial Technology (Thailand), Ltd.			TITLE
			DIMENSION OF HS50-R
HITT WORKS DWG. No.			REV.
4HTN000834			00
			SH.
			01
			01

(W=) : WIDTH OF TERMINAL.

※REMARK

- DIMENSION UNIT = Millimeter (mm).

- (a) = AUX. CONTACT NORMALLY OPENED.

- (b) = AUX. CONTACT NORMALLY CLOSED.