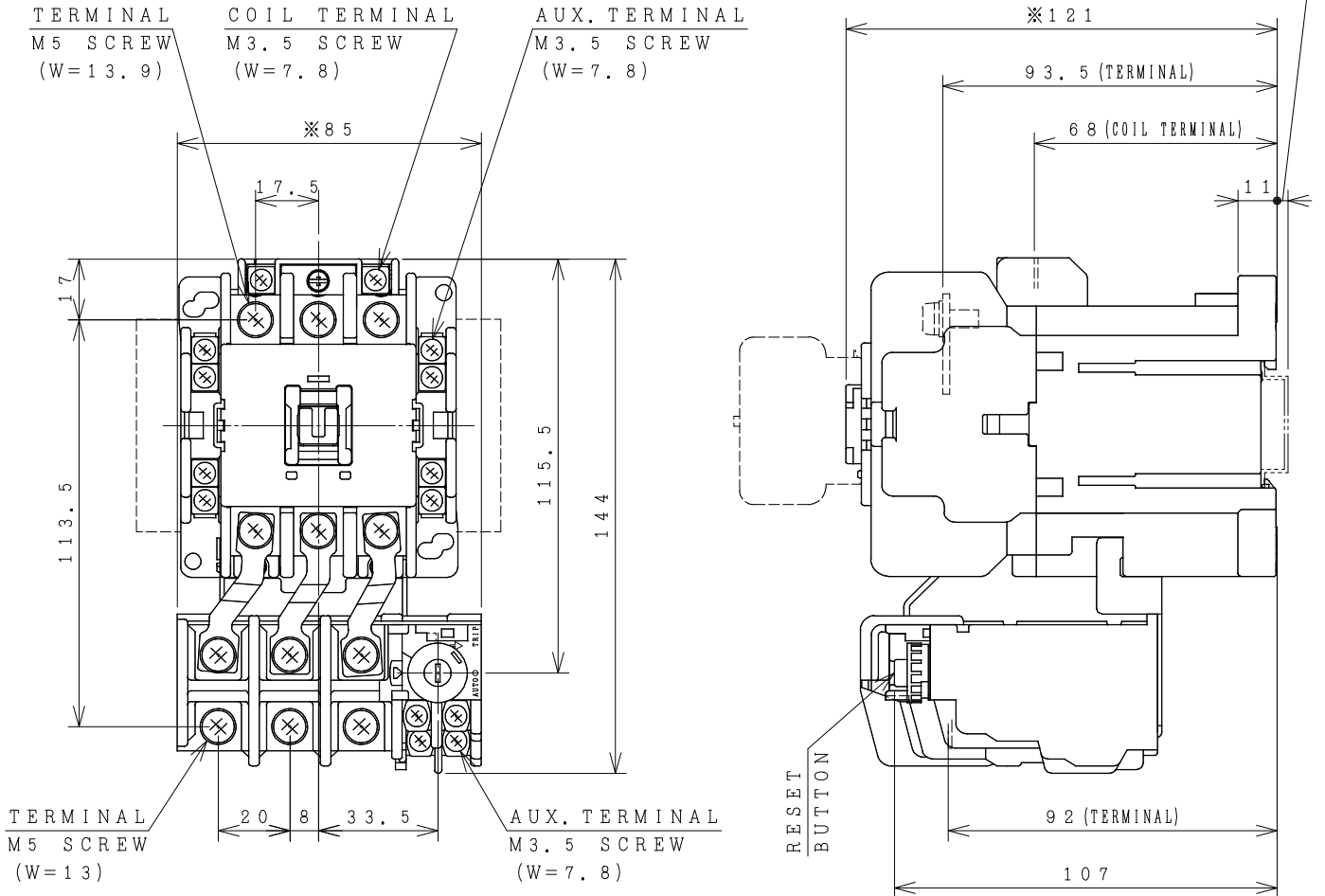


# HITACHI ELECTROMAGNETIC SWITCH

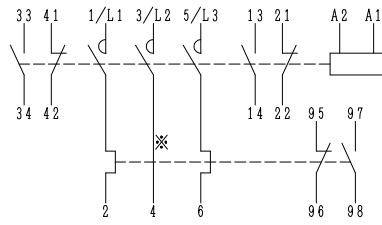
Type	Rated insulation voltage (Ui)	Max. rated capacity of motor			Rated thermal current (AC1 = 1th)	Applicable standard	Aux. Contact	Weight
		240V	15kW	50A				
HS50-TG	AC 690	240V	15kW	50A	70 A	IEC 60947-4-1	2a2b	1.2 kg
HS50-TKG	V	440V	22kW	50A				

※WITH AUX. CONTACT SIDE ON UNIT = 102mm.

※WITH AUX. CONTACT HEAD ON UNIT = 152mm.



OUTLINE DIMENSIONS.



※ IN CASE OF 2E THERMAL OVERLOAD RELAY.

AUX. CONTACTS: 2a2b  
 CONTACTS ARRANGEMENT.

MOUNTING HOLES.

(60~) 65x70  
 (64~) 68x67  
 ALSO POSSIBLE.  
 (W=) : WIDTH OF TERMINAL.

※REMARK  
 - DIMENSION UNIT = Millimeter (mm).  
 - (a) = AUX. CONTACT NORMALLY OPENED.  
 - (b) = AUX. CONTACT NORMALLY CLOSED.

(Reference 43068991R00).

DWN. O. SITTICHAJ 20/08/16	PROJECTION	TITLE
CHKD. C. Kiatissak	SCALE NTS.	DIMENSION OF HS50-TG, TKG
APPD. T. Kiatissak	HITT WORKS DWG. No.	4HTN000837
<b>HITACHI</b> Hitachi Industrial Technology (Thailand), Ltd.		REV. 00 SH. 01 01