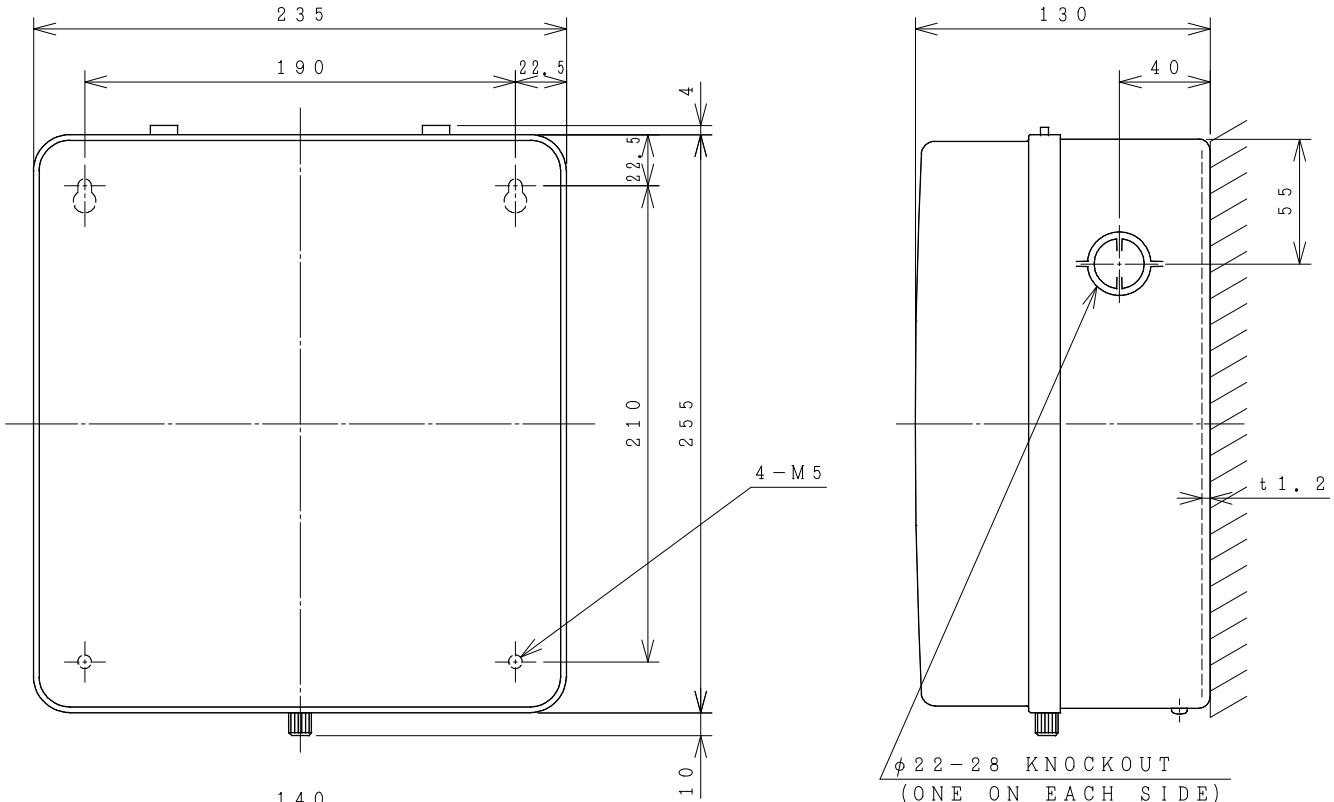
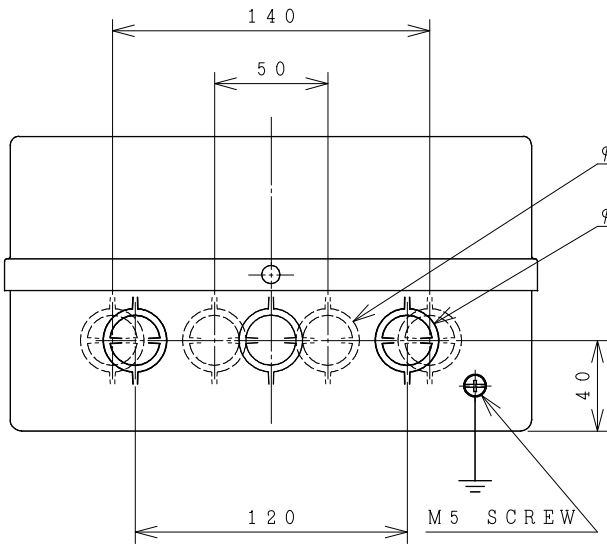


HITACHI ELECTROMAGNETIC SWITCH

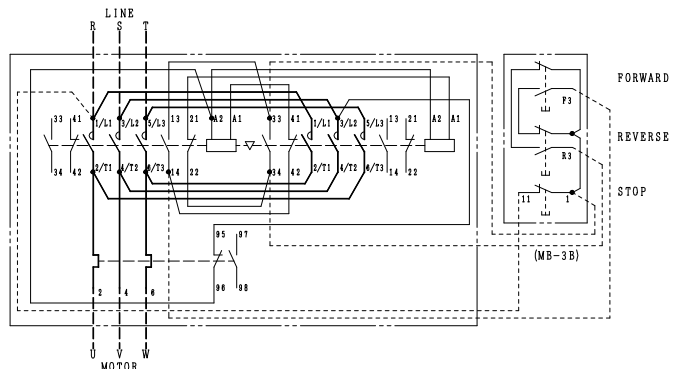
Type	Rated insulation voltage (Ui)	Max. rated capacity of motor			Rated thermal current (AC1 = I _{th})	Applicable standard	Aux. Contact	Weight
		240V	15kW	50A				
SHS50-RT	AC	240V	15kW	50A	60	IEC 60947-4-1	2a2b x2	4.7 kg
	690 V	440V	22kW	50A				



OUTLINE DIMENSIONS.



φ 22-28 KNOCKOUT (FOUR ON THE TOP)
φ 22-28 KNOCKOUT (UNDER THREE)



CONTACTS ARRANGEMENT.

		TERMINAL SCREW	WIDTH OF TERMINAL
MAIN CIRCUIT	CONTACTOR	M5	13.9
	OVERLOAD RELAY	M5	13
OPERATION CIRCUIT	CONTACTOR	M3.5	7.8
	OVERLOAD RELAY	M3.5	7.8

REMARK
 - DIMENSION UNIT = Millimeter (mm).
 - (a) = AUX. CONTACT NORMALLY OPENED.
 - (b) = AUX. CONTACT NORMALLY CLOSED.

(Reference 43067536R01).

DWN. O. SITTICHAJ	20/08/16	PROJECTION	TITLE
CHKD. <i>C. Kiatissak</i>		SCALE	DIMENSION OF SHS50-RT
APPD. <i>T. Kiatissak</i>		NTS.	
HITT WORKS DWG. No.			REV.
HITACHI Hitachi Industrial Technology (Thailand), Ltd.			00
			01
			01

4HTN000842