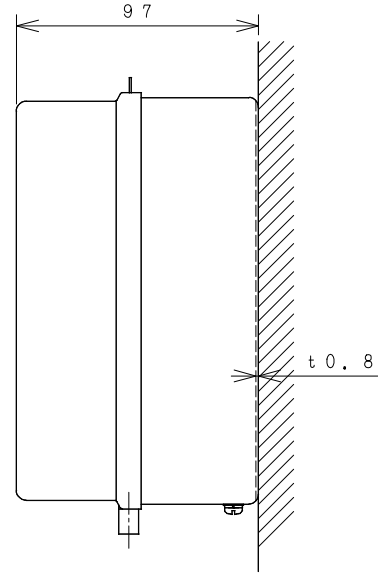
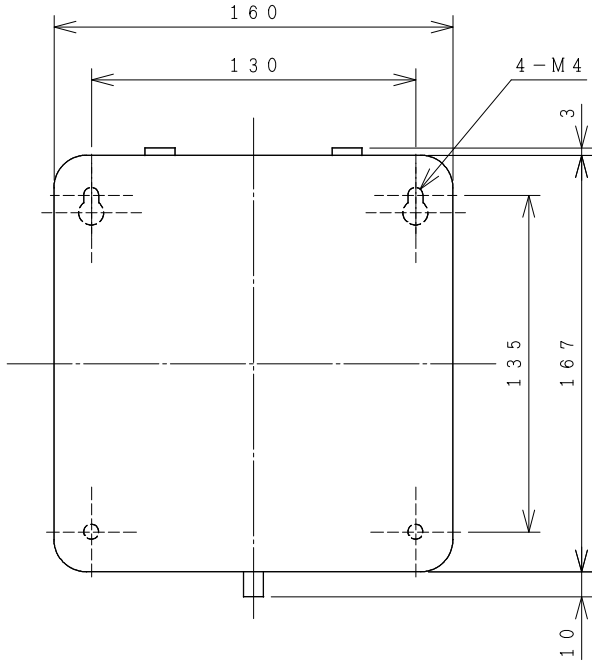
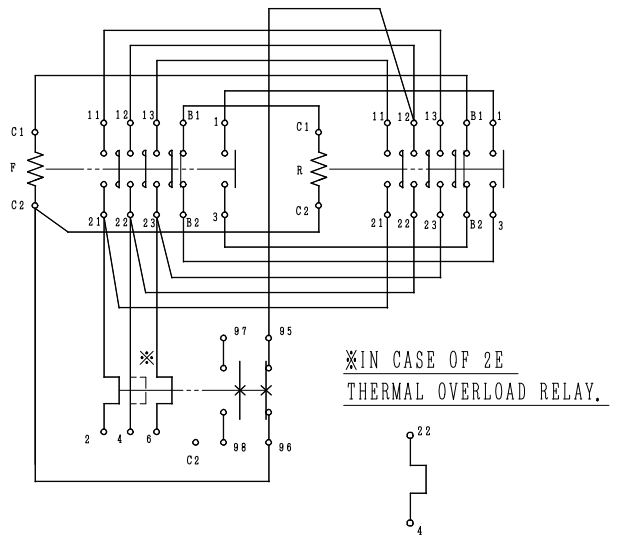
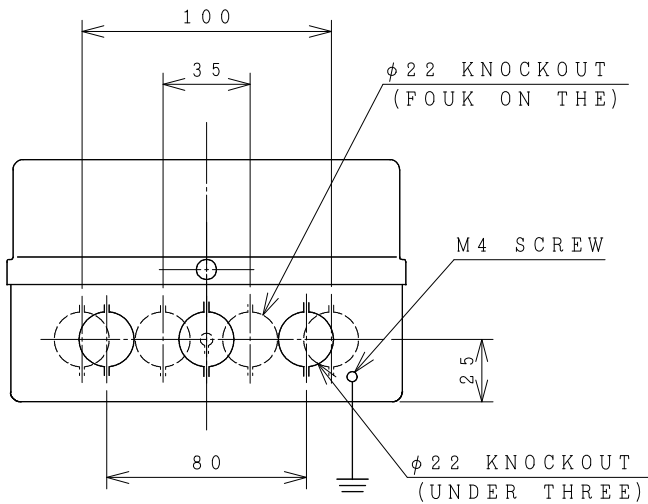


HITACHI ELECTROMAGNETIC SWITCH

Type	Rated insulation voltage (Ui)	Max. rated capacity of motor			Rated thermal current (AC1 = Ith)	Applicable standard	Aux. Contact	Weight
		240V	3kW	12A				
SH11-RT	AC 660 V	240V	3kW	12A	15 A	IEC 60947-4-1	1a1b x2	2.0 kg
SH11-RTK		440V	4kW	9A				



OUTLINE DIMENSIONS.



CONTACTS ARRANGEMENT.

		TERMINAL SCREW	WIDTH OF TERMINAL
MAIN CIRCUIT	CONTACTOR	M3, 5	7. 8
	OVERLOAD RELAY	M3, 5	7. 8
OPERATION CIRCUIT	CONTACTOR	M3, 5	7. 8
	OVERLOAD RELAY	M3, 5	7. 8

(Reference 43042571R01).

※REMARK

- DIMENSION UNIT = Millimeter (mm).
- (a) = AUX. CONTACT NORMALLY OPENED.
- (b) = AUX. CONTACT NORMALLY CLOSED.

DWN. C. JERRANAN	05/09/16	PROJECTION	TITLE
CHKD. <i>Jan-a</i>	S	SCALE NTS.	DIMENSION OF SH11-RT, RTK
APPD. <i>C. Kiattisak</i>			
HITACHI Hitachi Industrial Technology (Thailand), Ltd.			REV.
			00
4HTN000849			SH.
			01
			01