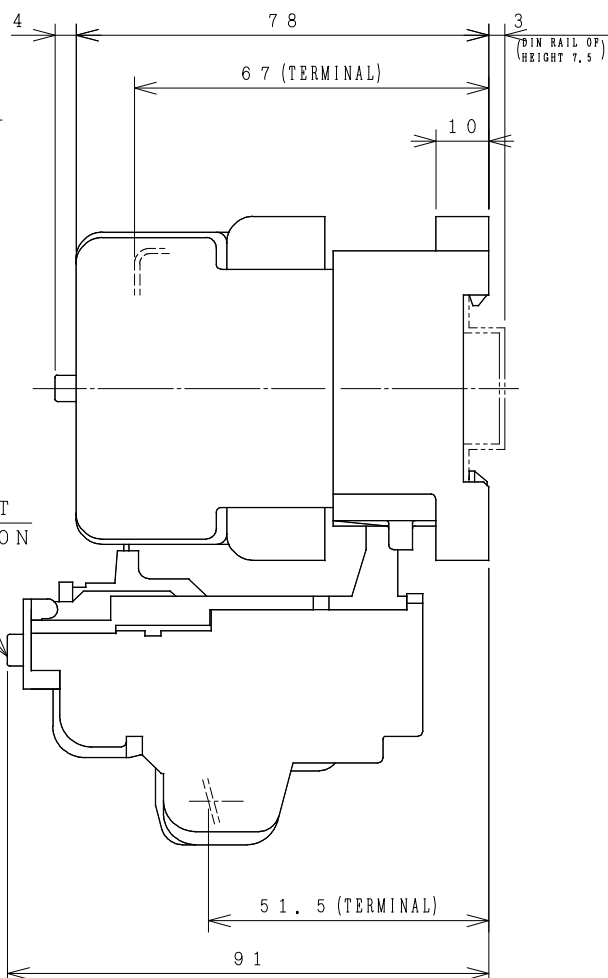
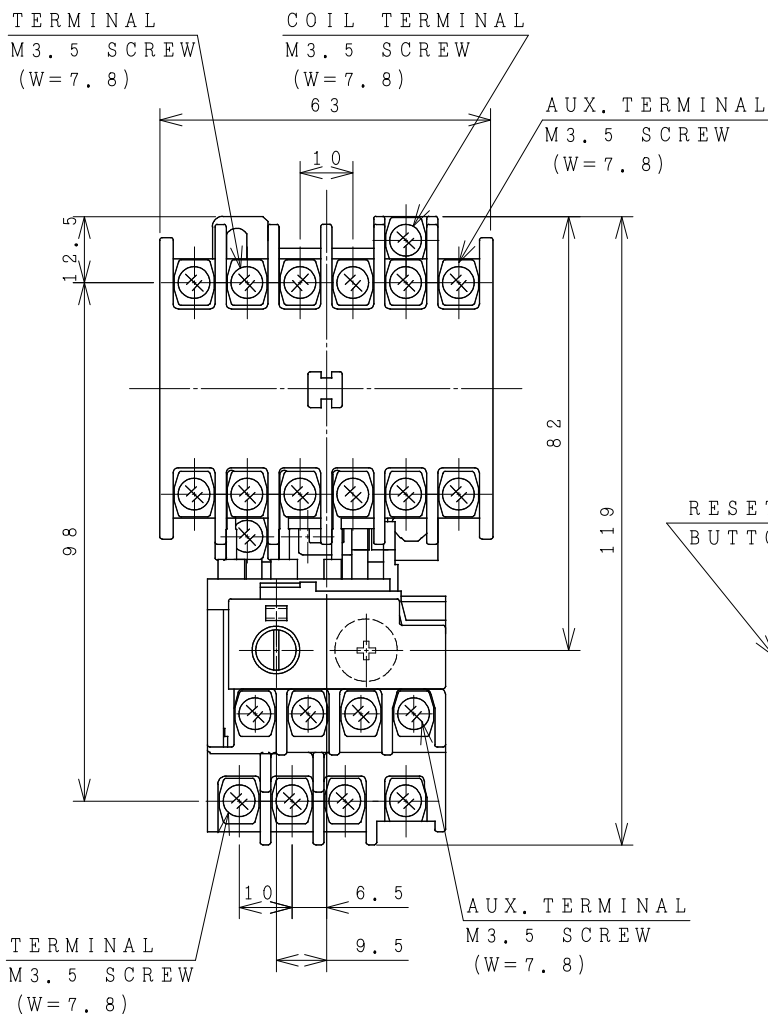
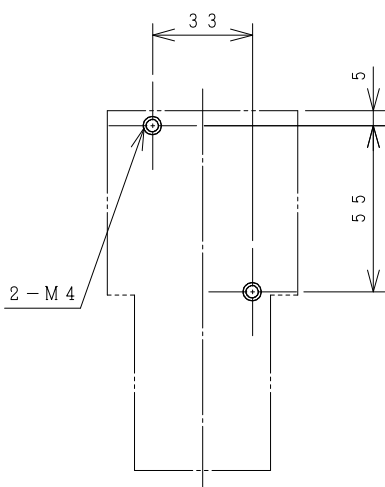


# HITACHI ELECTROMAGNETIC SWITCH

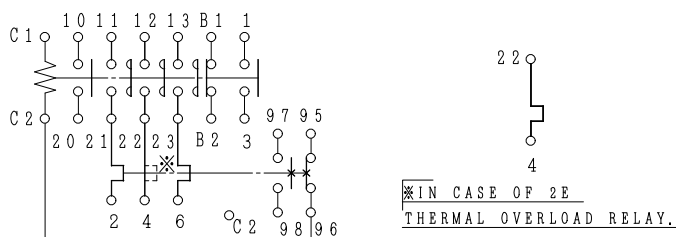
Type	Rated insulation voltage (Ui)	Max. rated capacity of motor			Rated thermal current (AC1 = Ith)	Applicable standard	Aux. Contact	Weight
		240V	3kW	12A				
H12-T	AC 660 V	240V	3kW	12A	20 A	IEC 60947-4-1	2a1b or 1a2b	0.65 kg
H12-TK		440V	4kW	9A				



OUTLINE DIMENSIONS.



MOUNTING HOLES.



CONTACTS ARRANGEMENT.

(Reference 43041553R02).

REMARK

- DIMENSION UNIT = Millimeter (mm).
- (a) = AUX. CONTACT NORMALLY OPENED.
- (b) = AUX. CONTACT NORMALLY CLOSED.

- 34 x 48
- 34 x 52
- 35 x 50

ALSO POSSIBLE.

(W=) : WIDTH OF TERMINAL.

DWN. C. JERRANAN	09/09/16	PROJECTION	TITLE
CHKD. <i>C. Kiattisak</i>		SCALE	DIMENSION OF H12-T, TK
APPD. <i>T. Kijisuda</i>		NTS.	
HITACHI Hitachi Industrial Technology (Thailand), Ltd.			HITT WORKS DWG. No.
			4HTN000851
			REV.
			00
			SH.
			01
			01