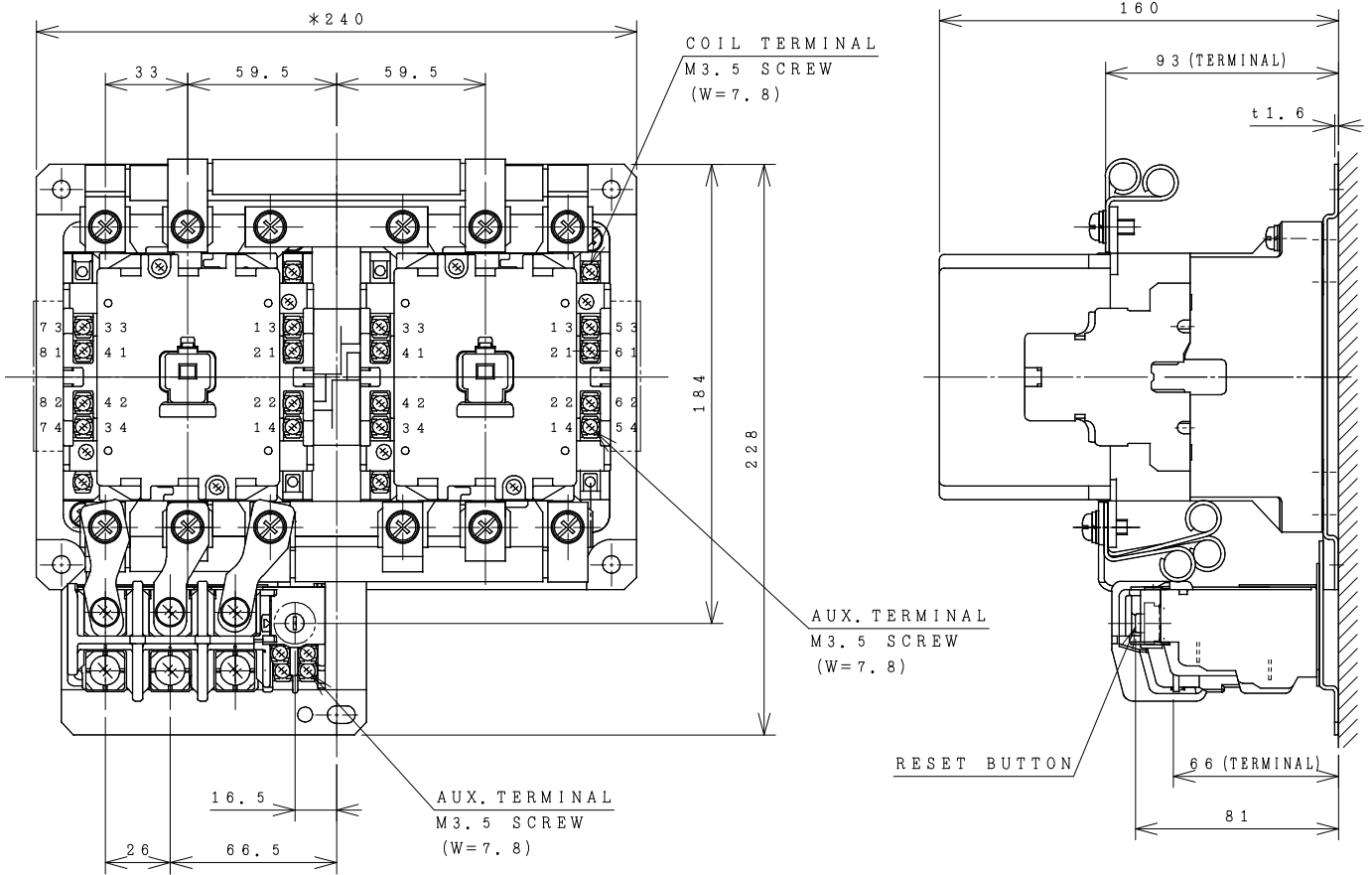


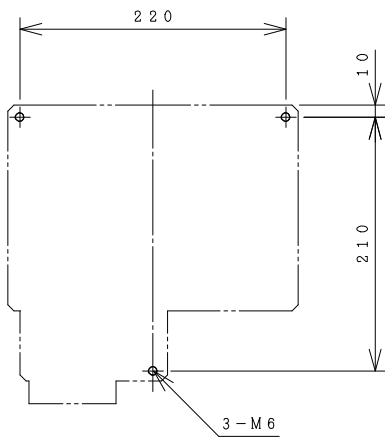
HITACHI ELECTROMAGNETIC SWITCH

Type	Rated insulation voltage (Ui)	Max. rated capacity of motor			Rated thermal current (AC1 = Ith)	Applicable standard	Aux. Contact	Weight
H80C-RT	AC 660 V	240V	22kW	80A	120 A	IEC 60947-4-1	(2a2b) x 2	5.8 kg
H80C-RTK		440V	37kW	80A				

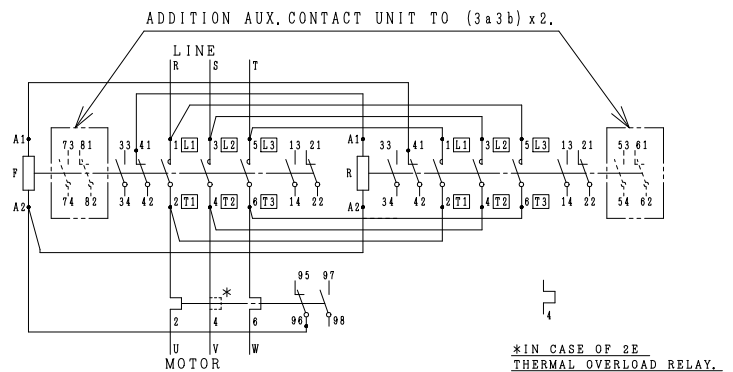
*WITH AUX. CONTACT (3a3b) x 2 = 243 mm.



OUTLINE DIMENSIONS.



MOUNTING HOLES.



CONTACTS ARRANGEMENT.

(Reference 43058178R01).

DWN. S. CHAIAMPOL 09/08/16	PROJECTION	TITLE	REV.
CHKD. <i>Janaka</i>	SCALE	DIMENSION OF H80C-RT, RTK	00
APPD. <i>C. Kiattisak</i>	NTS.		SH.
HITT WORKS DWG. No.			01
HITACHI Hitachi Industrial Technology (Thailand), Ltd.			01
4HTN000866			

(W=) : WIDTH OF TERMINAL.

*REMARK

- DIMENSION UNIT = Millimeter (mm.).

- (a) = AUX. CONTACT NORMALLY OPENED.

- (b) = AUX. CONTACT NORMALLY CLOSED.