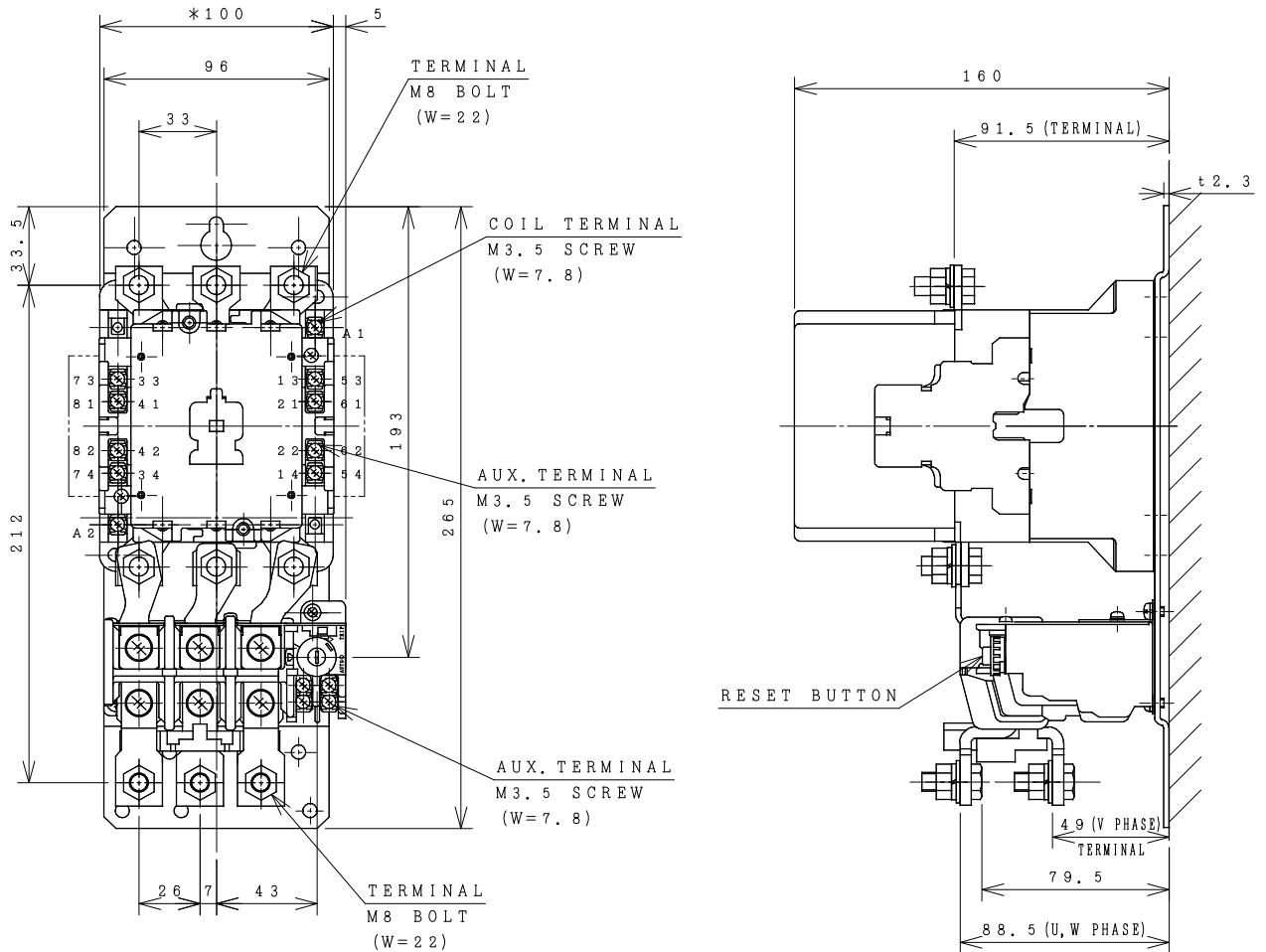


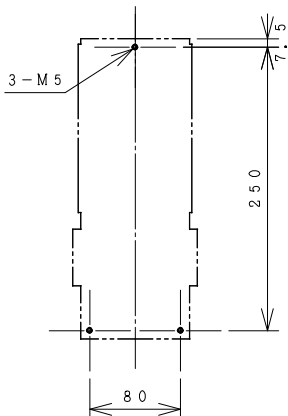
HITACHI ELECTROMAGNETIC SWITCH

Type	Rated insulation voltage (Ui)	Max. rated capacity of motor			Rated thermal current (AC1 = I _{th})	Applicable standard	Aux. Contact	Weight
H100C-T	AC 660 V	240V	30kW	105A	135 A	IEC 60947-4-1	2a2b	3.0 kg
H100C-TK		440V	50kW	100A				

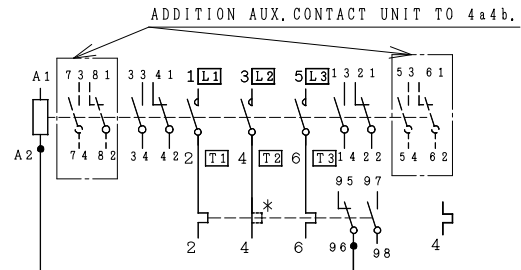
*WITH AUX. CONTACT 4a4b = 124 mm.



OUTLINE DIMENSIONS.



MOUNTING HOLES.



CONTACTS ARRANGEMENT.

*IN CASE OF 2E THERMAL OVERLOAD RELAY.

(Reference 43055979R05).

DWN. S. CHAIAMPOL	09/08/16	PROJECTION	TITLE
CHKD. <i>Janaka</i>	S	SCALE	DIMENSION OF H100C-T, -TK
APPD. <i>C. Kiatissak</i>		NTS.	
HITT WORKS DWG. No.			REV.
HITACHI Hitachi Industrial Technology (Thailand), Ltd.			00
			01
			01

(W=) : WIDTH OF TERMINAL.

※REMARK

- DIMENSION UNIT = Millimeter (mm.).

- (a) = AUX. CONTACT NORMALLY OPENED.

- (b) = AUX. CONTACT NORMALLY CLOSED.

4HTN000873