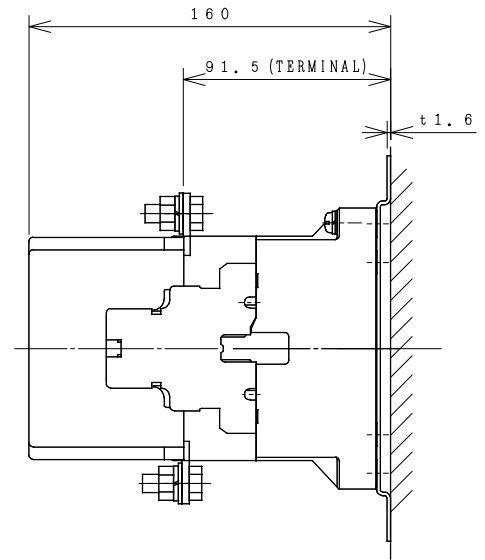
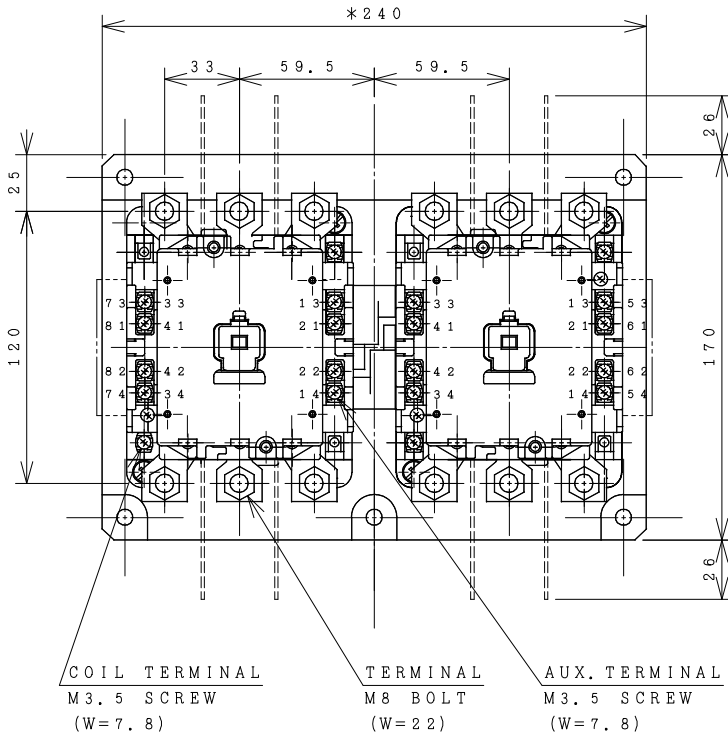


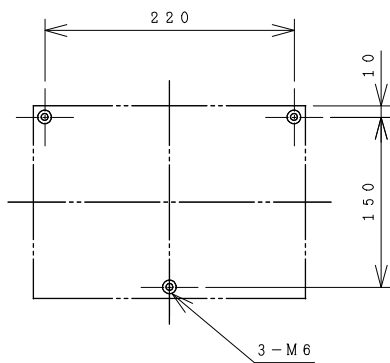
HITACHI ELECTROMAGNETIC CONTACTOR

Type	Rated insulation voltage (Ui)	Max. rated capacity of motor			Rated thermal current (AC1 = Ith)	Applicable standard	Aux. Contact	Weight
H100C-R	AC 660 V	240V	30kW	105A	135 A	IEC 60947-4-1	(2a2b) x 2	5.1 kg
		440V	50kW	100A				

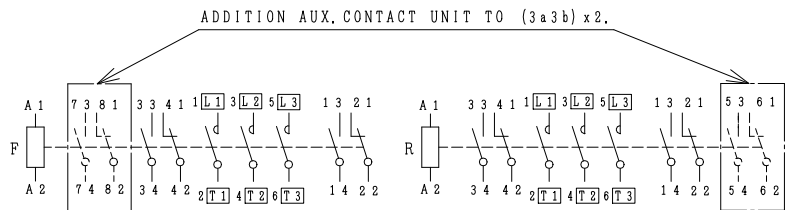
*WITH AUX. CONTACT (3a3b) x 2 = 243 mm.



OUTLINE DIMENSIONS.



MOUNTING HOLES.



CONTACTS ARRANGEMENT.

(Reference 43056814R01).

*REMARK

- DIMENSION UNIT = Millimeter (mm.).
- (a) = AUX. CONTACT NORMALLY OPENED.
- (b) = AUX. CONTACT NORMALLY CLOSED.

DWN. S. CHAIAMPOL	09/08/16	PROJECTION	TITLE
CHKD. <i>jsm-a</i>	S	SCALE NTS.	DIMENSION OF H100C-R
APPD. <i>C.Kiattisak</i>			
HITACHI Hitachi Industrial Technology (Thailand), Ltd.			4HTN000874
			REV.
			00
			01
			01

(W=) : WIDTH OF TERMINAL.