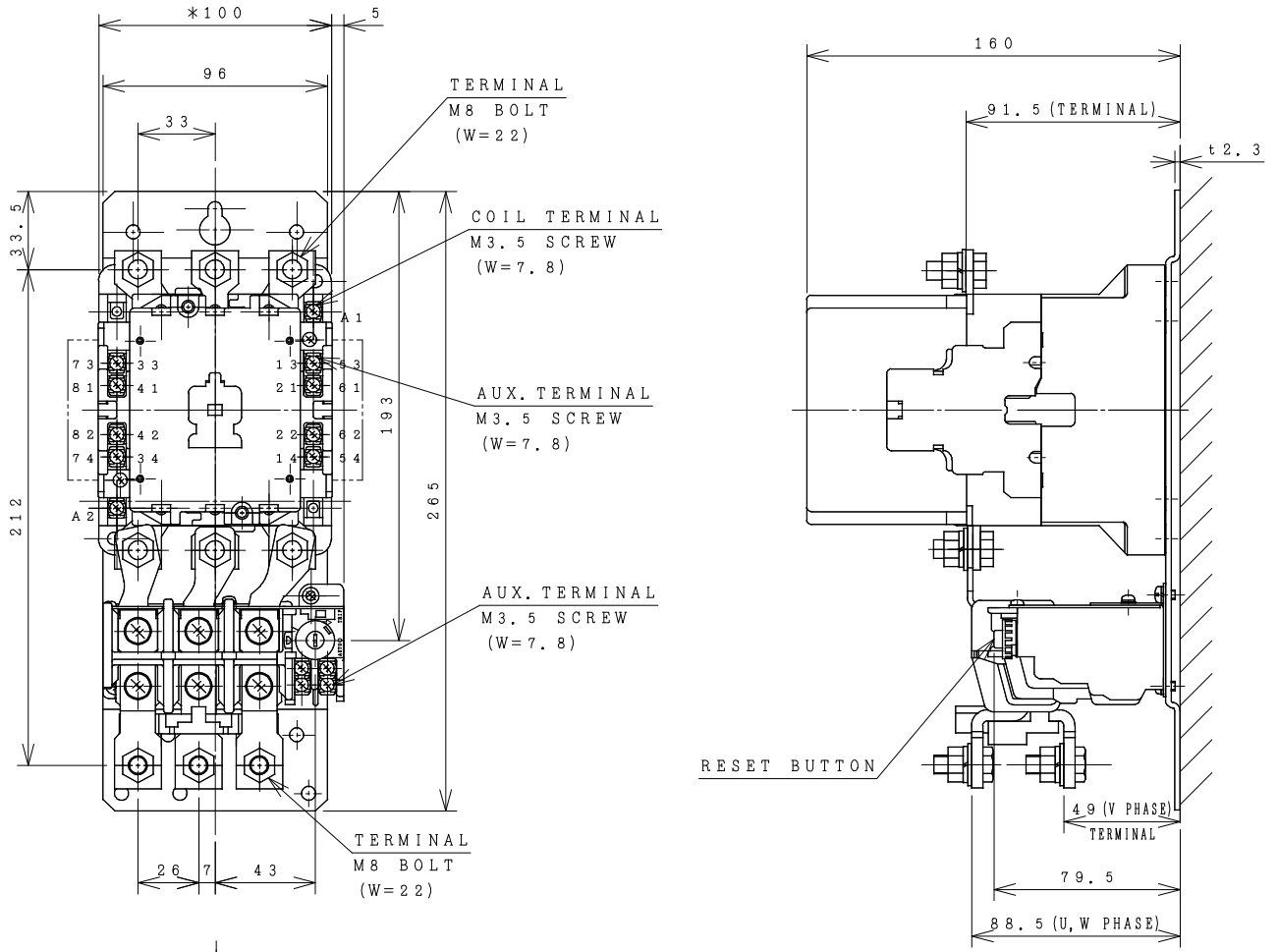


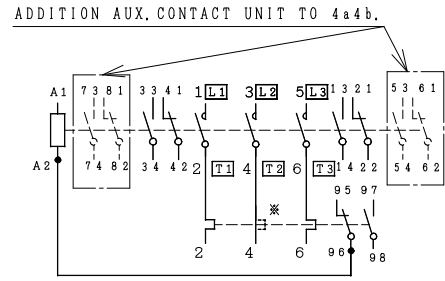
# HITACHI ELECTROMAGNETIC SWITCH

Type	Rated insulation voltage (Ui)	Max. rated capacity of motor			Rated thermal current (AC1 = Ith)	Applicable standard	Aux. Contact	Weight
		240V	37kW	126A				
H125C-T	AC 660	240V	37kW	126A	150 A	IEC 60947-4-1	2a2b	3.0 kg
H125C-TK	V	440V	60kW	125A				

\*WITH AUX. CONTACT 4 a 4 b = 124 mm.



OUTLINE DIMENSIONS.



CONTACTS ARRANGEMENT.

(Reference 43057164R04).

DWN. S. CHAIAMPOL CHKD. <i>[Signature]</i> APPD. <i>[Signature]</i>	20/08/16 S NTS.	PROJECTION  SCALE NTS.	TITLE DIMENSION OF H125C-T, TK HITT WORKS DWG. No. 4HTN000883	REV. 00 SH. 01 01
---	-----------------------	---------------------------------	---	-------------------------------

(W=) : WIDTH OF TERMINAL.  
 \*REMARK  
 - DIMENSION UNIT = Millimeter (mm.).  
 - (a) = AUX. CONTACT NORMALLY OPENED.  
 - (b) = AUX. CONTACT NORMALLY CLOSED.

**HITACHI**  
 Hitachi Industrial Technology (Thailand), Ltd.