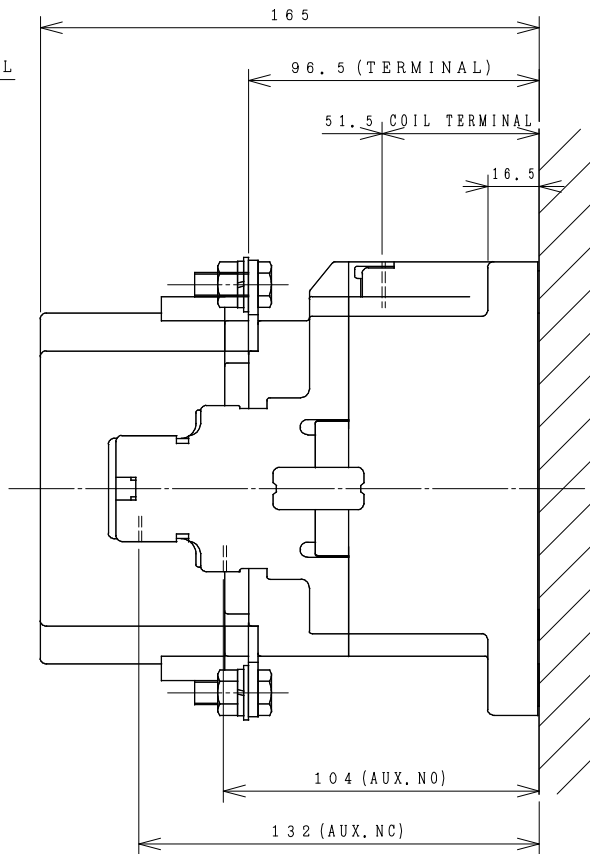
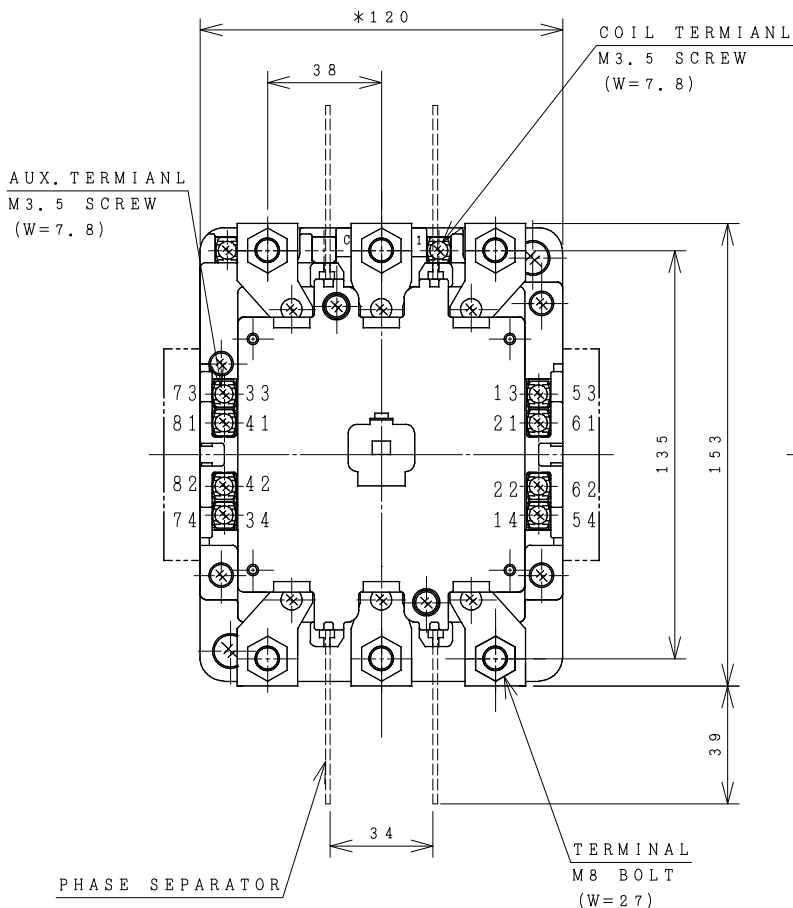


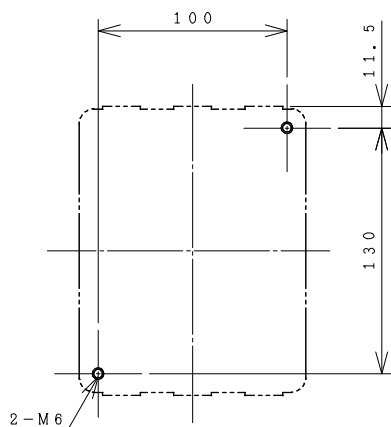
# HITACHI ELECTROMAGNETIC CONTACTOR

Type	Rated insulation voltage (Ui)	Max. rated capacity of motor			Rated thermal current (AC1 = Ith)	Applicable standard	Aux. Contact	Weight
H150C	AC 660 V	240V	45kW	150A	200 A	IEC 60947-4-1	2a2b	3.3 kg
		440V	75kW	150A				

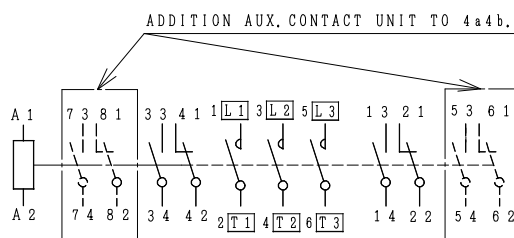
\*WITH AUX. CONTACT 4 a 4 b = 144 mm.



OUTLINE DIMENSIONS.



MOUNTING HOLES.



CONTACTS ARRANGEMENT.

(Reference 43055902R01).

\*REMARK

- DIMENSION UNIT = Millimeter (mm.).
- (a) = AUX. CONTACT NORMALLY OPENED.
- (b) = AUX. CONTACT NORMALLY CLOSED.

DWN. S. CHAIAMPOL	25/08/16	PROJECTION	TITLE
CHKD. <i>Jan-a</i>	S	SCALE NTS.	DIMENSION OF H150C
APPD. <i>C.Kiatissak</i>			
<b>HITACHI</b> Hitachi Industrial Technology (Thailand), Ltd.			REV.
			4HTN000891

(W=) : WIDTH OF TERMINAL.

00
01
01