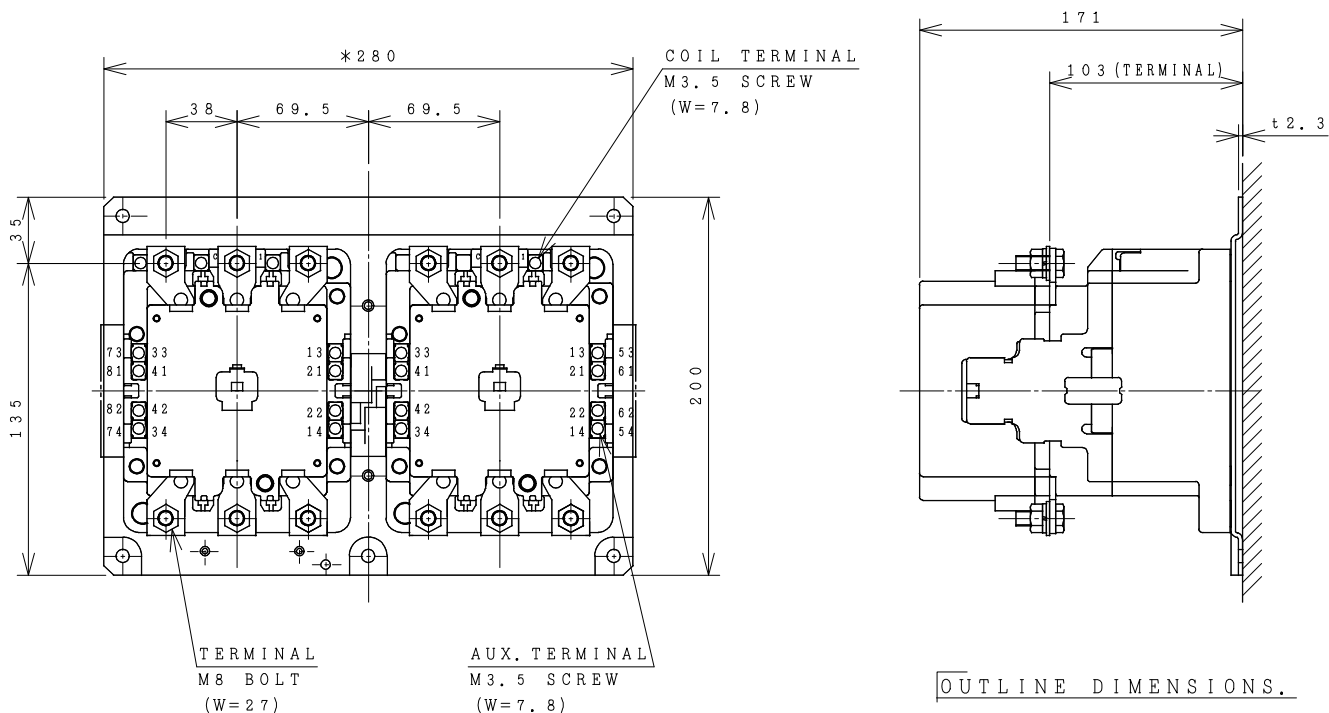


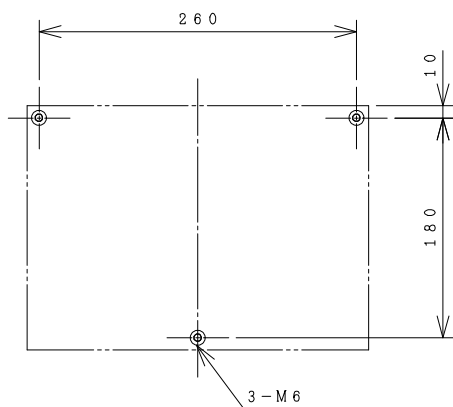
HITACHI ELECTROMAGNETIC CONTACTOR

Type	Rated insulation voltage (Ui)	Max. rated capacity of motor			Rated thermal current (AC1 = Ith)	Applicable standard	Aux. Contact	Weight
		240V	45kW	150A				
H150C-R	AC 660 V	440V	75kW	150A	200 A	IEC 60947-4-1	(2a2b) x 2	6.2 kg

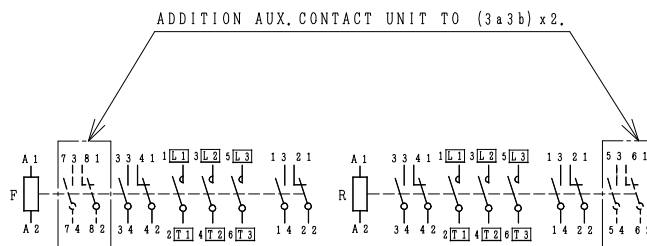
*WITH AUX. CONTACT (3a3b) x 2 = 283 mm.



OUTLINE DIMENSIONS.



MOUNTING HOLES.



CONTACTS ARRANGEMENT.

(Reference 43056003R02).

*REMARK

- DIMENSION UNIT = Millimeter (mm.).
- (a) = AUX. CONTACT NORMALLY OPENED.
- (b) = AUX. CONTACT NORMALLY CLOSED.

DWN. S. CHAIAMPOL	20/08/16	PROJECTION	TITLE
CHKD. <i>Jan-a</i>		SCALE	DIMENSION OF H150C-R
APPD. <i>C.Kiattisak</i>		NTS.	
HITACHI Hitachi Industrial Technology (Thailand), Ltd.			HITT WORKS DWG. No. 4HTN000893
			REV. 00 SH. 01 01

(W=) : WIDTH OF TERMINAL.