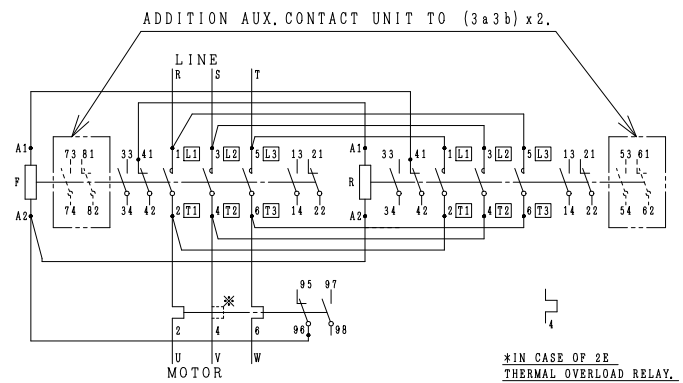
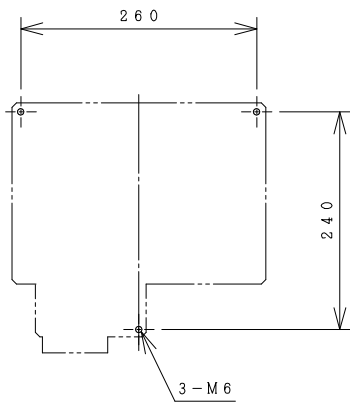
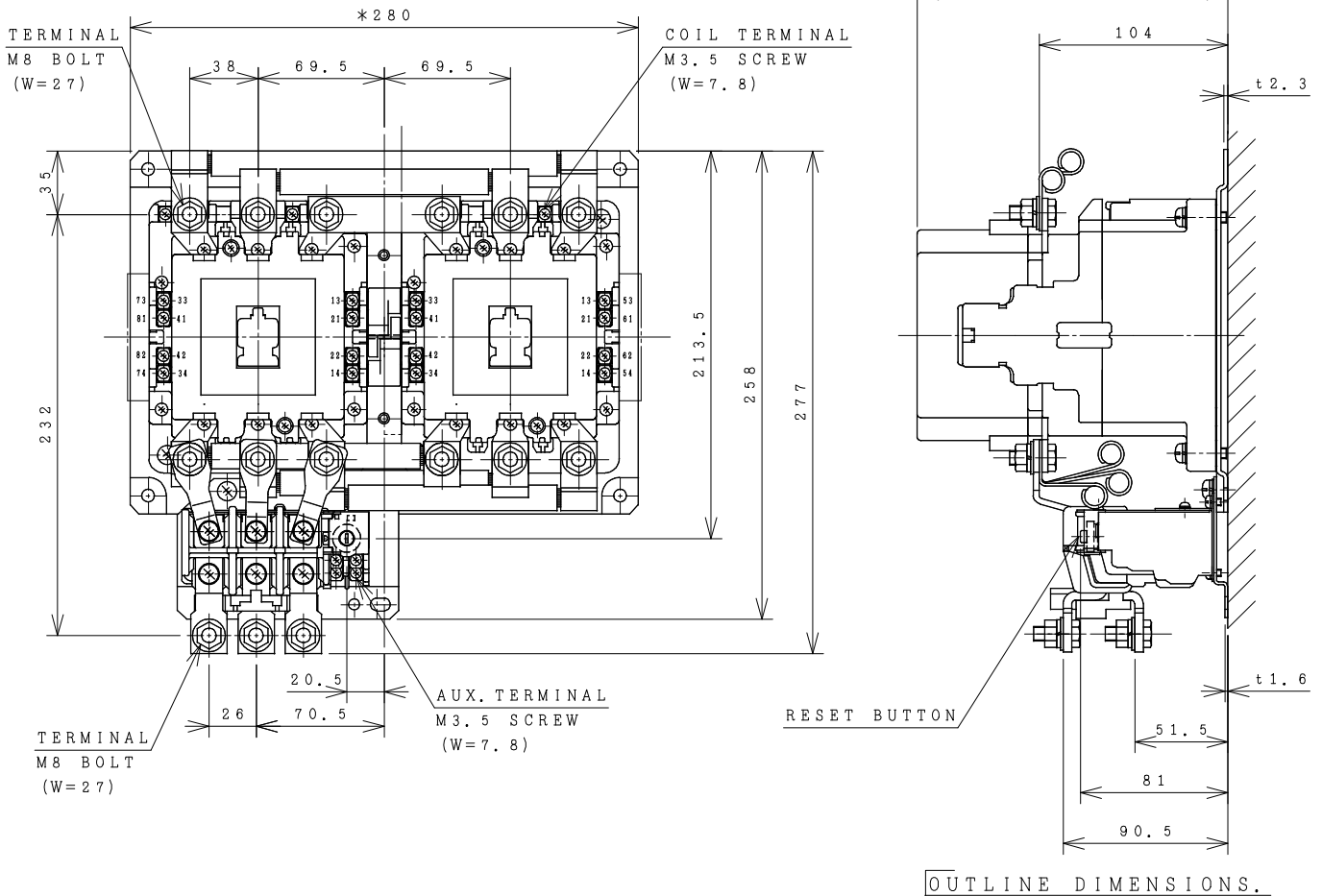


HITACHI ELECTROMAGNETIC SWITCH

Type	Rated insulation voltage (Ui)	Max. rated capacity of motor			Rated thermal current (AC1 = I _{th})	Applicable standard	Aux. Contact	Weight
H150C-RT	AC 660 V	240V	45kW	150A	200 A	IEC 60947-4-1	(2a2b) x 2	9.2 kg
H150C-RTK		440V	75kW	150A				

*WITH AUX. CONTACT (3 a 3 b) x 2 = 283 mm.



CONTACTS ARRANGEMENT.

(Reference 43058181R01).

DWN. S. CHAIAMPOL	26/08/16	PROJECTION	TITLE
CHKD. <i>Janaka</i>		SCALE	DIMENSION OF H150C-RT, RTK
APPD. <i>C. Kiatissak</i>		NTS.	
HITT WORKS DWG. No.			REV.
HITACHI Hitachi Industrial Technology (Thailand), Ltd.			00
			01
			01

(W=) : WIDTH OF TERMINAL.

*REMARK

- DIMENSION UNIT = Millimeter (mm.).

- (a) = AUX. CONTACT NORMALLY OPENED.

- (b) = AUX. CONTACT NORMALLY CLOSED.

4 HTN000894