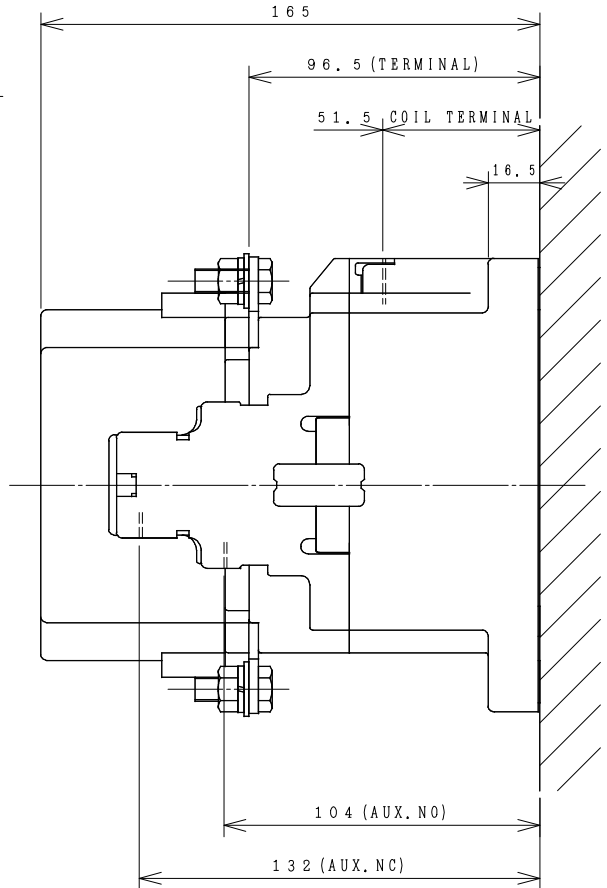
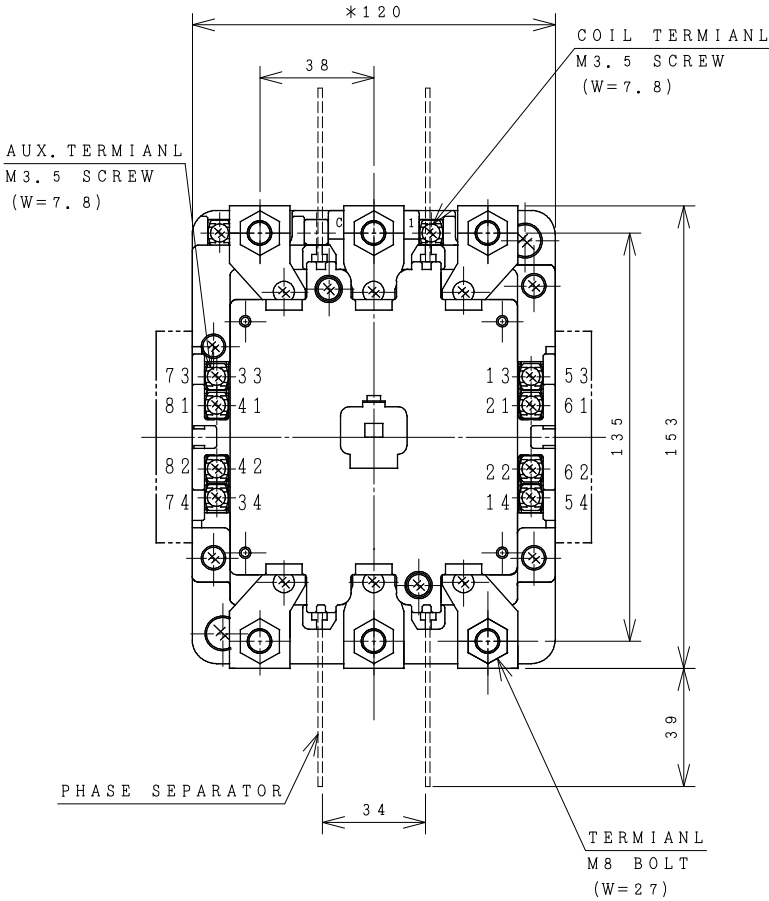


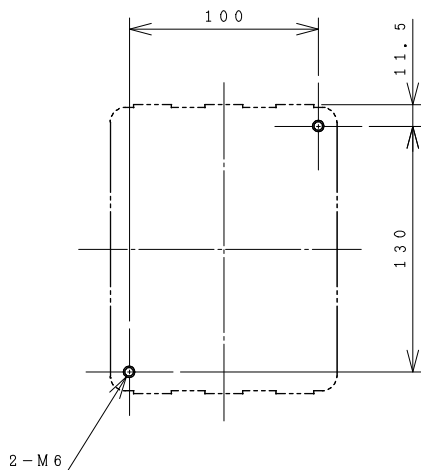
HITACHI ELECTROMAGNETIC CONTACTOR

Type	Rated insulation voltage (Ui)	Max. rated capacity of motor			Rated thermal current (AC1 = Ith)	Applicable standard	Aux. Contact	Weight
H150C-G	AC 660 V	240V	45kW	150A	200 A	IEC 60947-4-1	2a2b	3.3 kg
		440V	75kW	150A				

*WITH AUX. CONTACT 4 a 4 b = 144 mm.

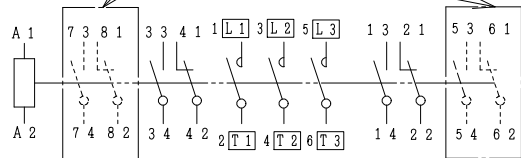


OUTLINE DIMENSIONS.



MOUNTING HOLES.

ADDITION AUX. CONTACT UNIT TO 4a4b.



CONTACTS ARRANGEMENT.

(Reference 43059924R00).

***REMARK**

- DIMENSION UNIT = Millimeter (mm.).
- (a) = AUX. CONTACT NORMALLY OPENED.
- (b) = AUX. CONTACT NORMALLY CLOSED.

DWN. S. CHAIAMPOL	27/08/16	PROJECTION	TITLE
CHKD. <i>Jan-a</i>		SCALE	DIMENSION OF H150C-G
APPD. <i>C. Kiattisak</i>		NTS.	
HITT WORKS DWG. No.			REV.
HITACHI Hitachi Industrial Technology (Thailand), Ltd.			00
			01
			01

(W=) : WIDTH OF TERMINAL.

4HTN000895