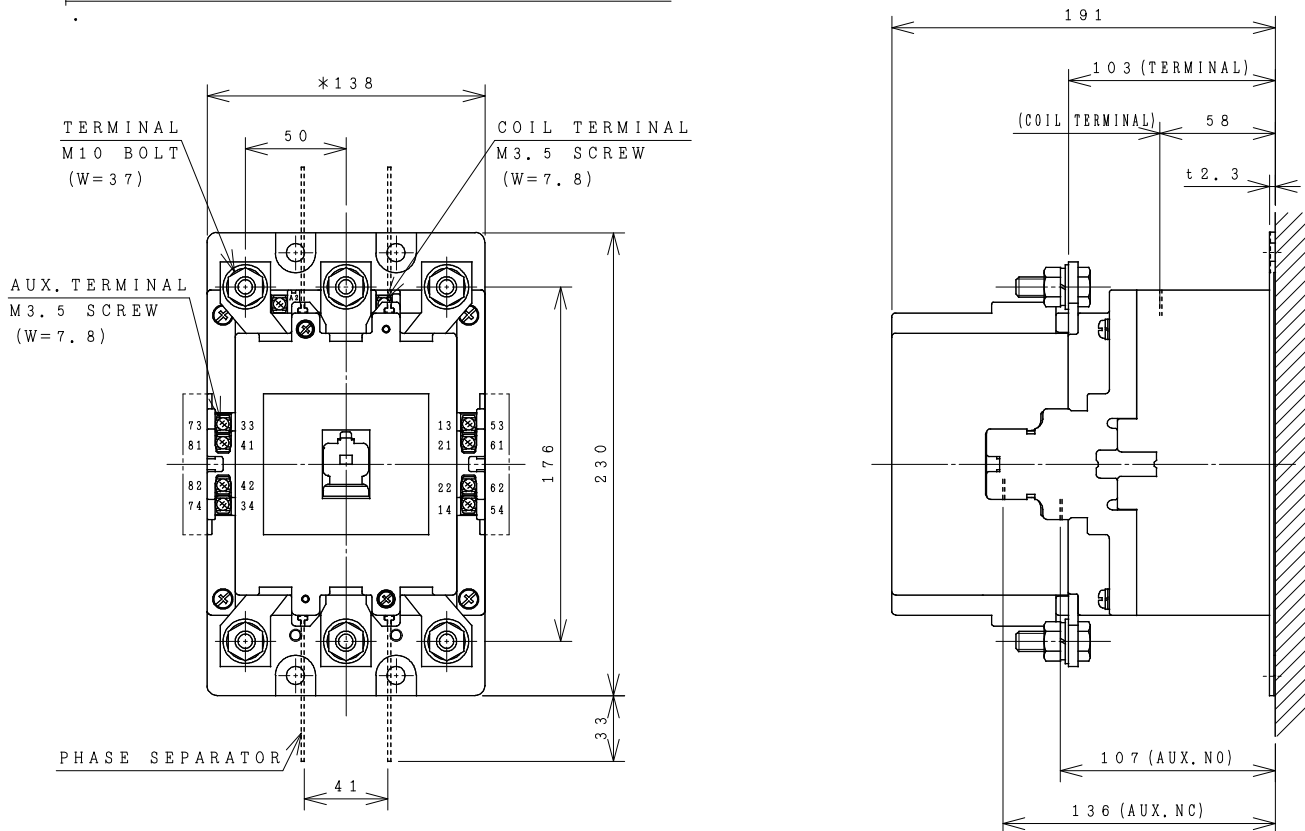


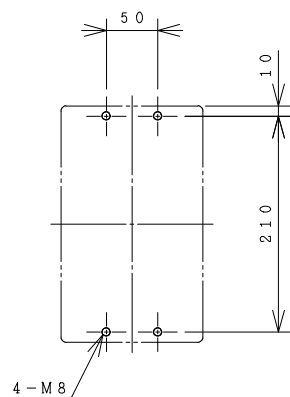
# HITACHI ELECTROMAGNETIC CONTACTOR

Type	Rated insulation voltage (Ui)	Max. rated capacity of motor			Rated thermal current (AC1 = Ith)	Applicable standard	Aux. Contact	Weight
		240V	55kW	182A				
H200C	AC 660 V	440V	90kW	180A	260 A	IEC 60947-4-1	2a2b	5.5 kg

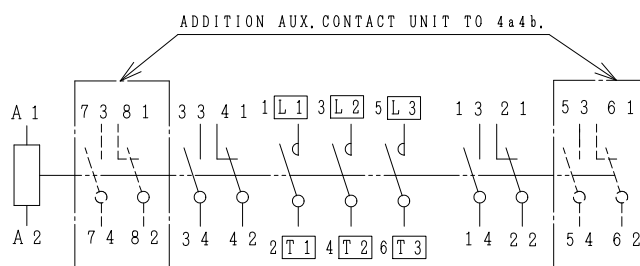
\*WITH AUX. CONTACT 4a4b = 162 mm.



OUTLINE DIMENSIONS.



MOUNTING HOLES.



CONTACTS ARRANGEMENT.

(Reference 43055971R02).

\*REMARK

- DIMENSION UNIT = Millimeter (mm.).
- (a) = AUX. CONTACT NORMALLY OPENED.
- (b) = AUX. CONTACT NORMALLY CLOSED.

DWN. S. CHAIAMPOL	26/08/16	PROJECTION	TITLE
CHKD. <i>Jan-a</i>		SCALE	DIMENSION OF H200C
APPD. <i>C. Kiattisak</i>		NTS.	
HITT WORKS DWG. No.			REV.
HITACHI Hitachi Industrial Technology (Thailand), Ltd.			00
4HTN000901			SH.
			01
			01

(W=) : WIDTH OF TERMINAL.