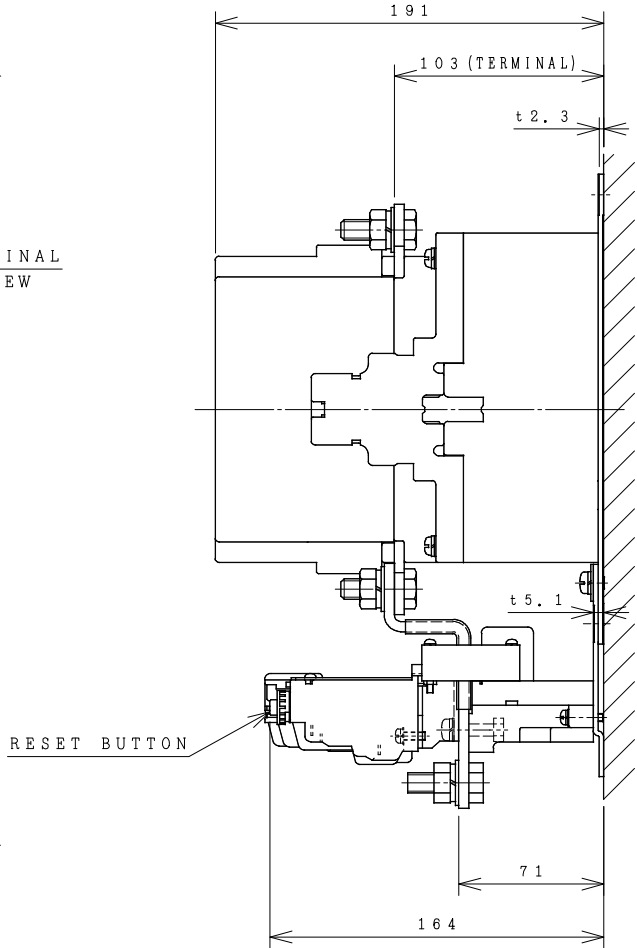
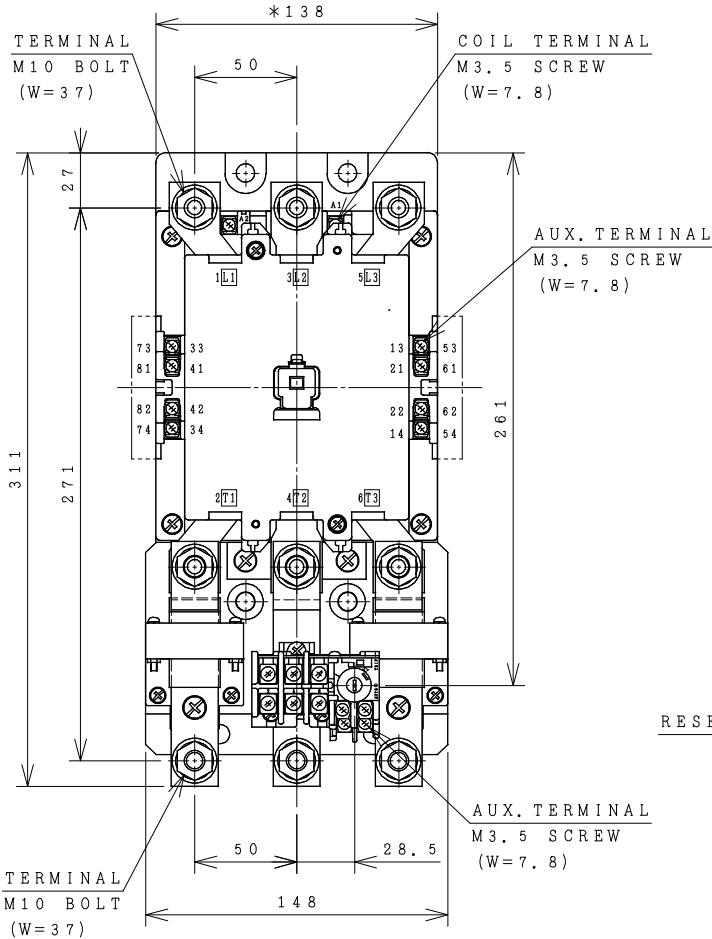


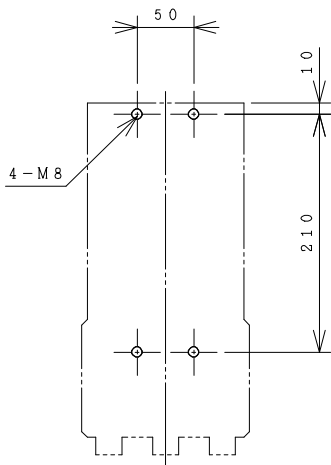
HITACHI ELECTROMAGNETIC SWITCH

Type	Rated insulation voltage (Ui)	Max. rated capacity of motor			Rated thermal current (AC1 = I _{th})	Applicable standard	Aux. Contact	Weight
H250C-T	AC 660 V	240V	75kW	240A	300 A	IEC 60947-4-1	2a2b	7.2 kg
H250C-TK		440V	120kW	240A				

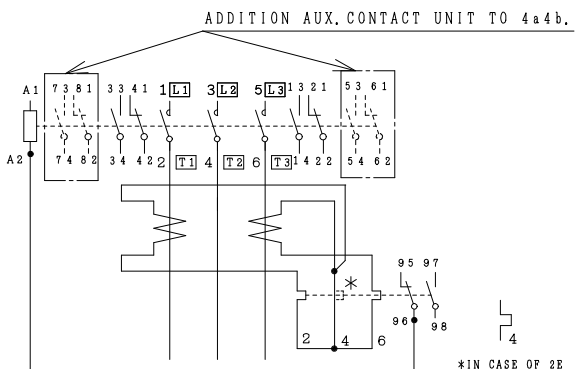
*WITH AUX. CONTACT 4 a 4 b = 162 mm.



OUTLINE DIMENSIONS.



MOUNTING HOLES.



CONTACTS ARRANGEMENT.

(Reference 43055993R01).

DWN. S. CHAIAMPOL	29/08/16	PROJECTION	TITLE
CHKD. <i>Jan-a</i>	S	SCALE NTS.	DIMENSION OF H250C-T, TK
APPD. <i>Tokisuda</i>			
HITACHI Hitachi Industrial Technology (Thailand), Ltd.			4HTN000912
			REV. 00
			SH. 01
			01

(W=) : WIDTH OF TERMINAL.
 *REMARK
 - DIMENSION UNIT = Millimeter (mm.).
 - (a) = AUX. CONTACT NORMALLY OPENED.
 - (b) = AUX. CONTACT NORMALLY CLOSED.