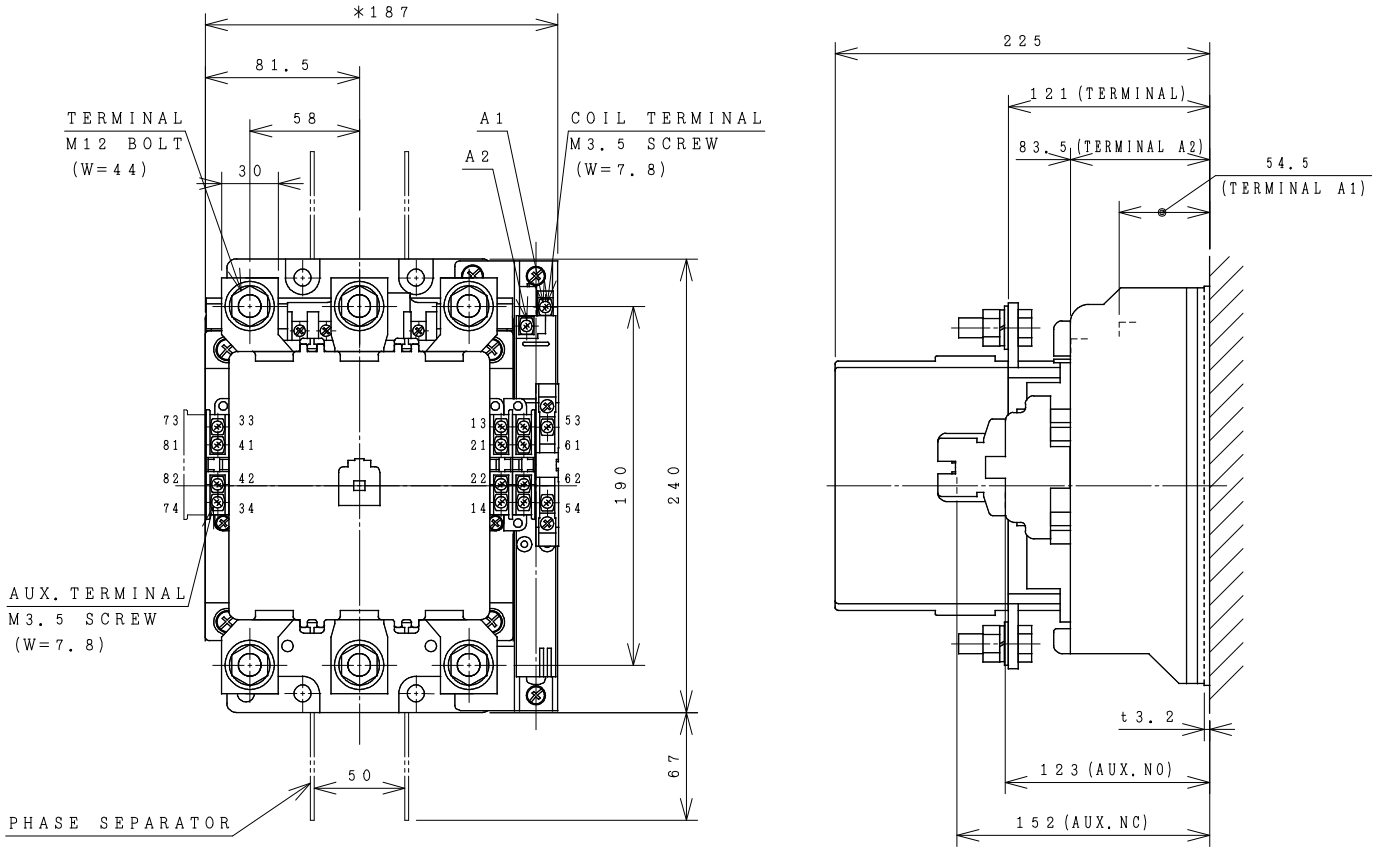


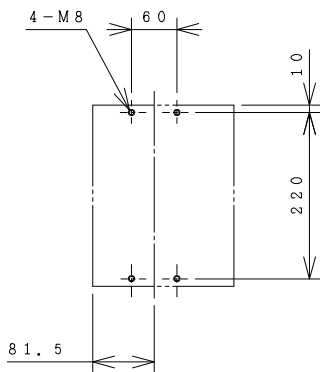
HITACHI ELECTROMAGNETIC CONTACTOR

Type	Rated insulation voltage (Ui)	Max. rated capacity of motor			Rated thermal current (AC1 = Ith)	Applicable standard	Aux. Contact	Weight
		240V	90kW	300A				
H300C-G	AC 660 V	440V	150kW	300A	350 A	IEC 60947-4-1	(3a3b) x 2	9.7 kg

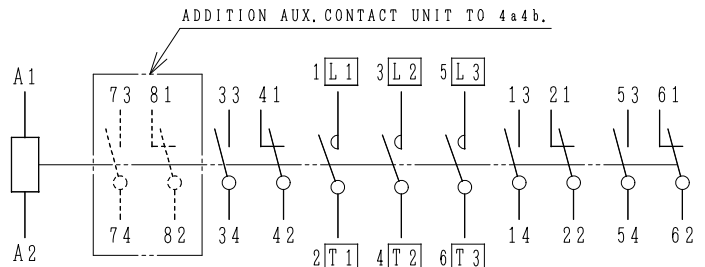
*WITH AUX. CONTACT (4 a 4 b) x 2 = 199 mm.



OUTLINE DIMENSIONS.



MOUNTING HOLES.



CONTACTS ARRANGEMENT.

(Reference 43057719R01).

DWN. S. CHAIAMPOL 02/09/16 CHKD. <i>[Signature]</i> APPD. <i>[Signature]</i>	PROJECTION SCALE NTS.	TITLE DIMENSION OF H300C-G	HITT WORKS DWG. No. 4HTN000924	REV. 00 SH. 01 01
--	---------------------------------	----------------------------------	-----------------------------------	-------------------------------

(W=) : WIDTH OF TERMINAL.

*REMARK

- DIMENSION UNIT = Millimeter (mm.).
- (a) = AUX. CONTACT NORMALLY OPENED.
- (b) = AUX. CONTACT NORMALLY CLOSED.

HITACHI
Hitachi Industrial Technology (Thailand), Ltd.