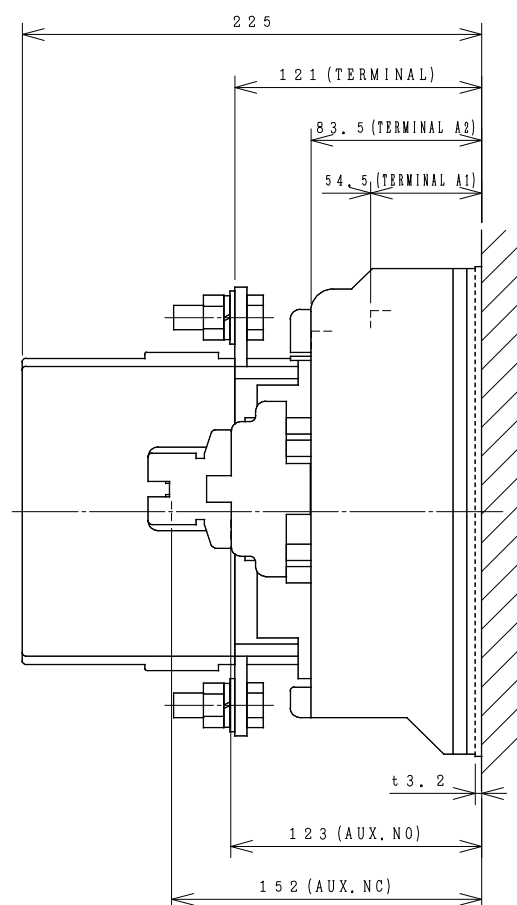
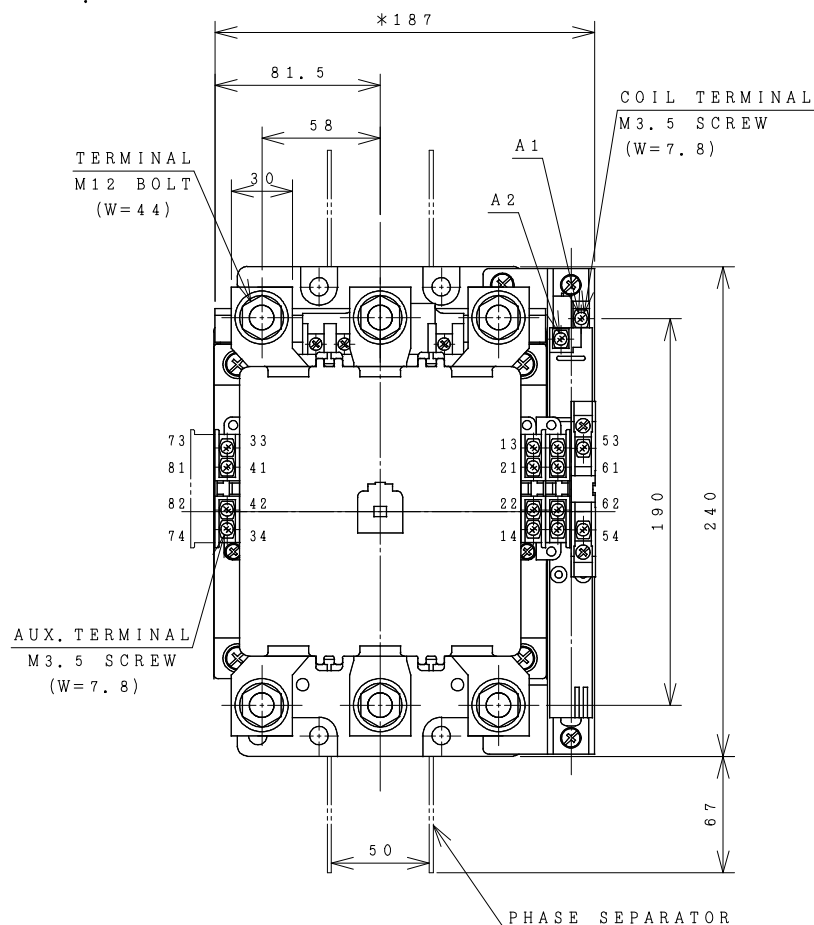


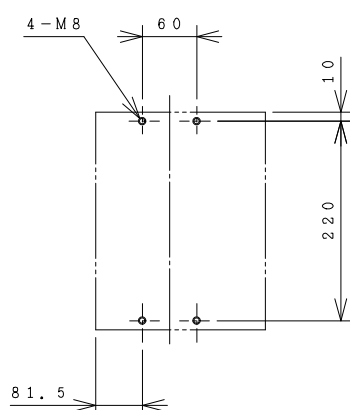
## HITACHI ELECTROMAGNETIC CONTACTOR

Type	Rated insulation voltage (Ui)	Max. rated capacity of motor			Rated thermal current (AC1 = I <sub>th</sub> )	Applicable standard	Aux. Contact	Weight
H400C	AC 660 V	240V	115kW	400A	420 A	IEC 60947-4-1	3a3b	9.7 kg
		440V	200kW	400A				

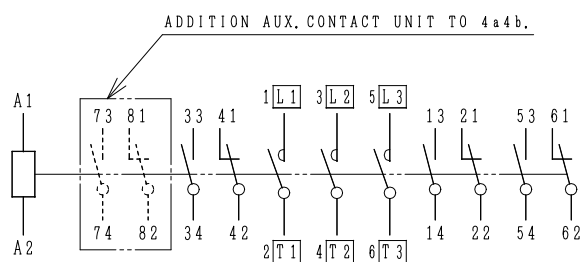
\*WITH AUX. CONTACT 4a4b = 199 mm.



OUTLINE DIMENSIONS.



MOUNTING HOLES.



CONTACTS ARRANGEMENT.

(Reference 43055974R02).

## \*REMARK

- DIMENSION UNIT = Millimeter (mm.).
- (a) = AUX. CONTACT NORMALLY OPENED.
- (b) = AUX. CONTACT NORMALLY CLOSED.

DWN.	S. CHAIAMPOL	02/09/16	PROJECTION	TITLE	REV.
CHKD.	C. Kiatissak		SCALE	DIMENSION OF H400C	00
APPD.	T. Kiatissak		NTS.		01
HITACHI Hitachi Industrial Technology (Thailand), Ltd.					01
HITT WORKS DWG. No.					4HTN000929

(W=) : WIDTH OF TERMINAL.