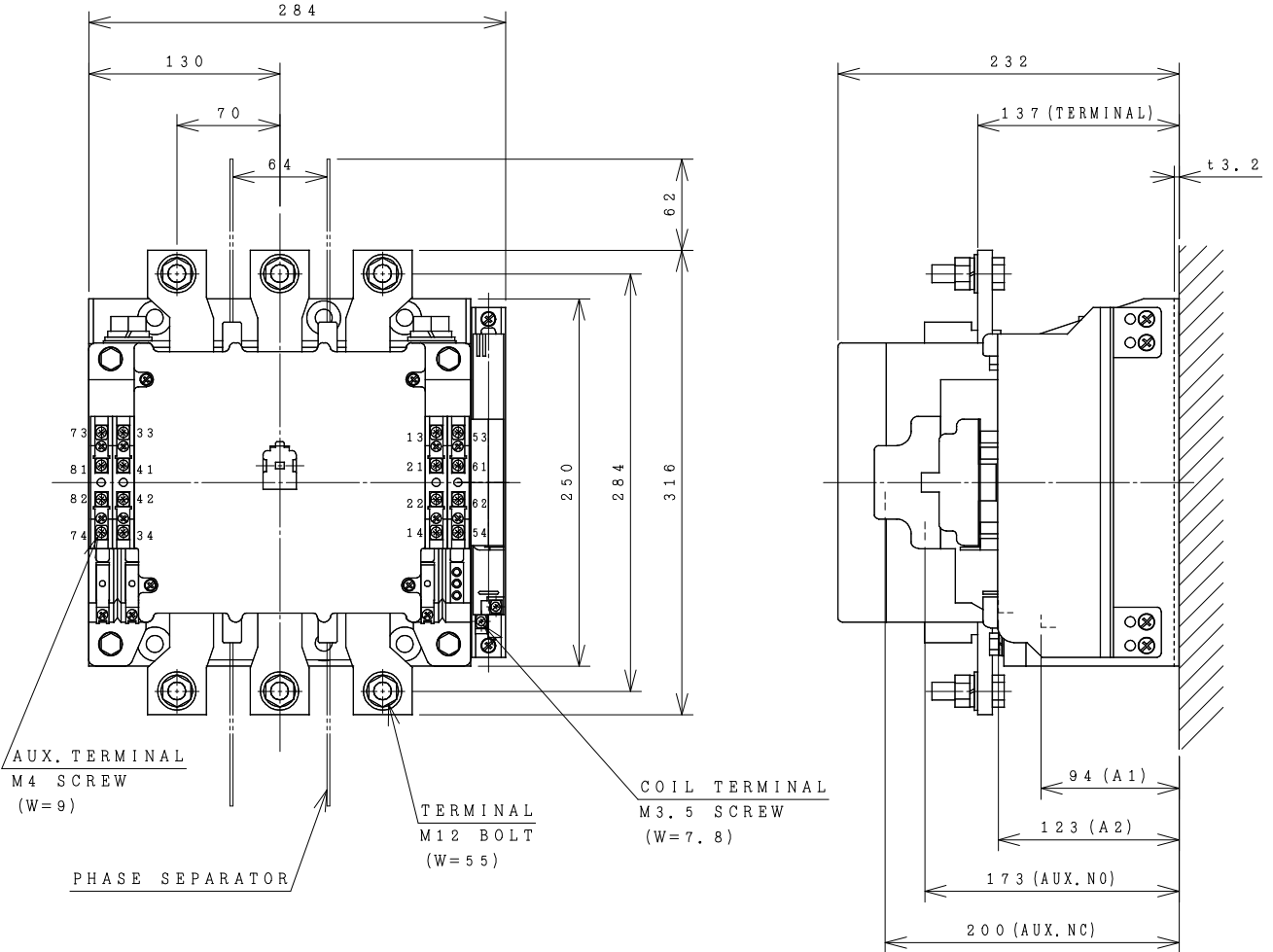
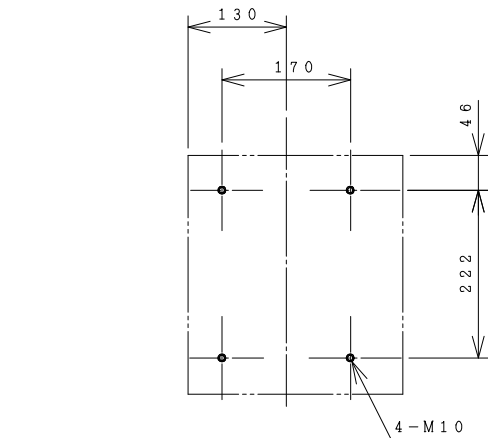


# HITACHI ELECTROMAGNETIC CONTACTOR

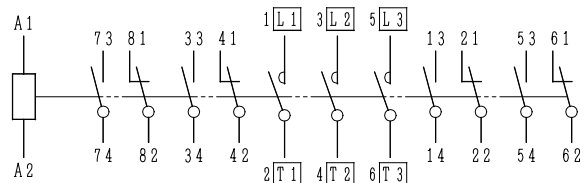
Type	Rated insulation voltage (Ui)	Max. rated capacity of motor			Rated thermal current (AC1 = I <sub>th</sub> )	Applicable standard	Aux. Contact	Weight
		240V	160kW	600A				
H600C	AC 660 V	440V	300kW	600A	600 A	IEC 60947-4-1	4a4b	22 kg
		240V	160kW	600A				



OUTLINE DIMENSIONS.



MOUNTING HOLES.



CONTACTS ARRANGEMENT.

(Reference 43055975R02).

DWN. S. CHAIAMPOL 06/09/16	PROJECTION	TITLE	DIMENSION OF H600C
CHKD. <i>Jan-a</i>	SCALE	HITT WORKS DWG. No.	
APPD. <i>C. Kiattisak</i>	NTS.		
<b>HITACHI</b> Hitachi Industrial Technology (Thailand), Ltd.			4HTN000938
			REV. 00 SH. 01 01

(W=) : WIDTH OF TERMINAL.  
 \*REMARK  
 - DIMENSION UNIT = Millimeter (mm.).  
 - (a) = AUX. CONTACT NORMALLY OPENED.  
 - (b) = AUX. CONTACT NORMALLY CLOSED.