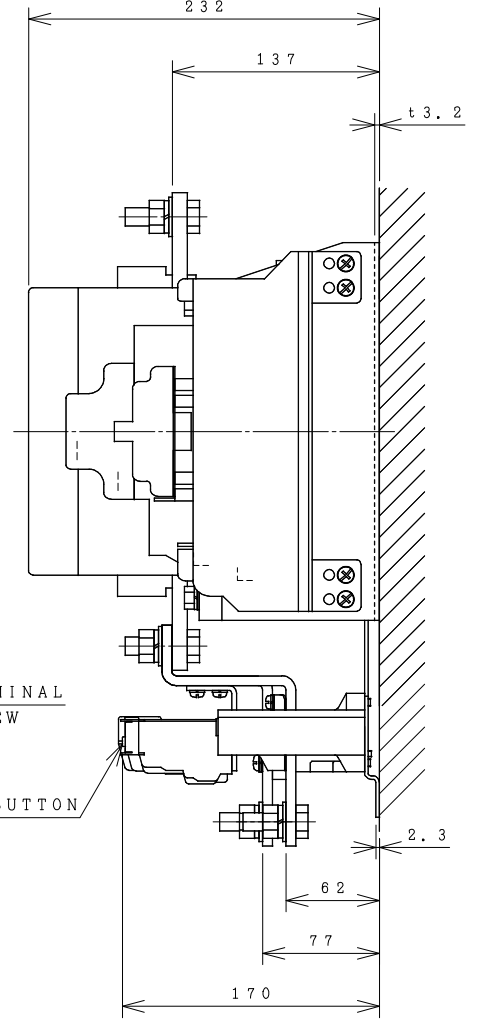
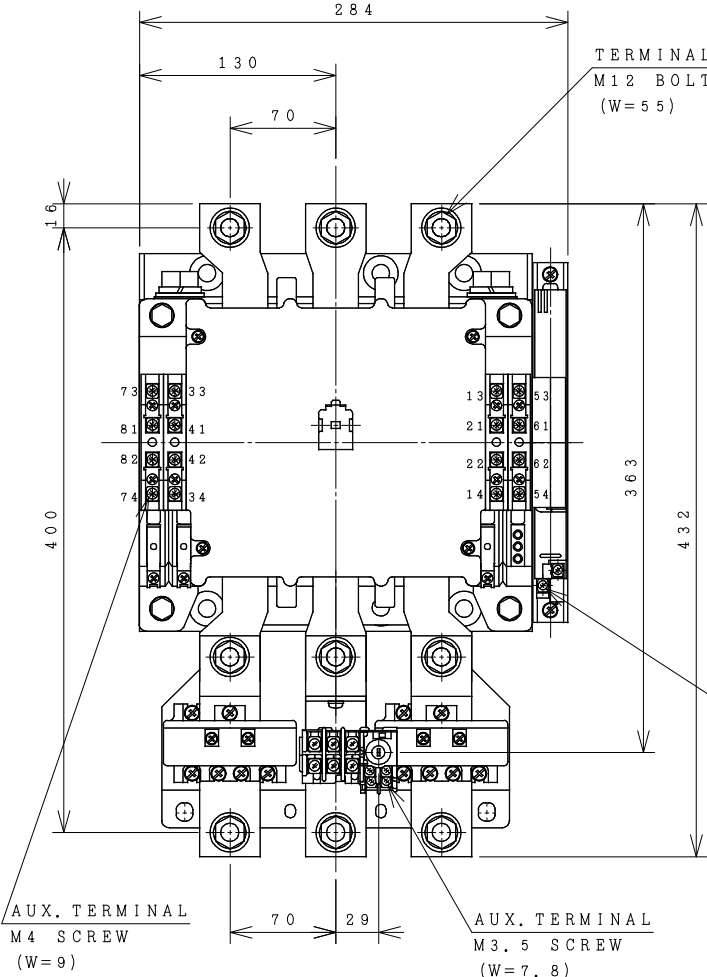
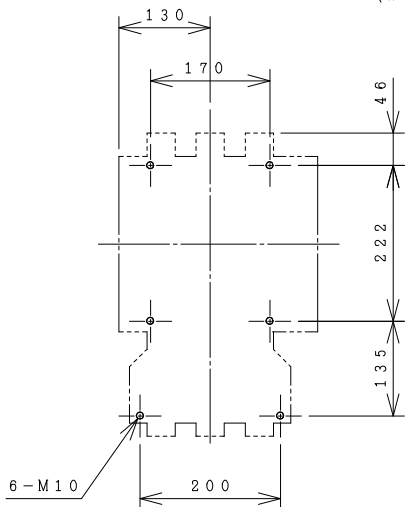


# HITACHI ELECTROMAGNETIC SWITCH

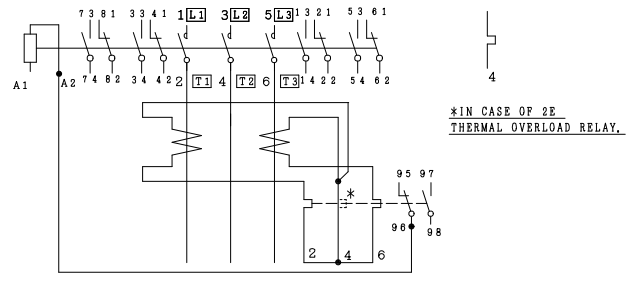
Type	Rated insulation voltage (Ui)	Max. rated capacity of motor			Rated thermal current (AC1 = I <sub>th</sub> )	Applicable standard	Aux. Contact	Weight
H600C-T	AC 660 V	240V	160kW	600A	600 A	IEC 60947-4-1	4a4b	28 kg
H600C-TK		440V	300kW	600A				



OUTLINE DIMENSIONS.



MOUNTING HOLES.



CONTACTS ARRANGEMENT.

(W=) : WIDTH OF TERMINAL.

※REMARK

- DIMENSION UNIT = Millimeter (mm.).

- (a) = AUX. CONTACT NORMALLY OPENED.

- (b) = AUX. CONTACT NORMALLY CLOSED.

(Reference 43055996R03).

DWN. S. CHAIAMPOL	07/09/16	PROJECTION	TITLE
CHKD. <i>Jan-a</i>	S	SCALE	DIMENSION OF H600C-T, TK
APPD. <i>C. Kiatissak</i>		NTS.	
HITT WORKS DWG. No.			REV.
4HTN000939			00
HITACHI Hitachi Industrial Technology (Thailand), Ltd.			SH.
			01
			01