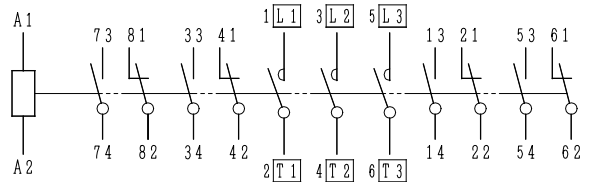
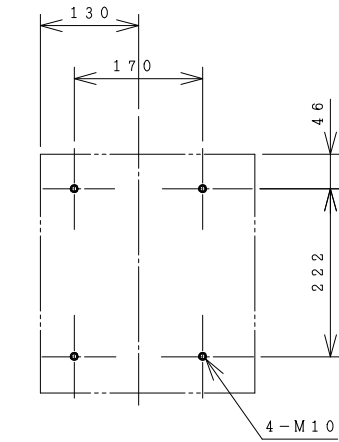
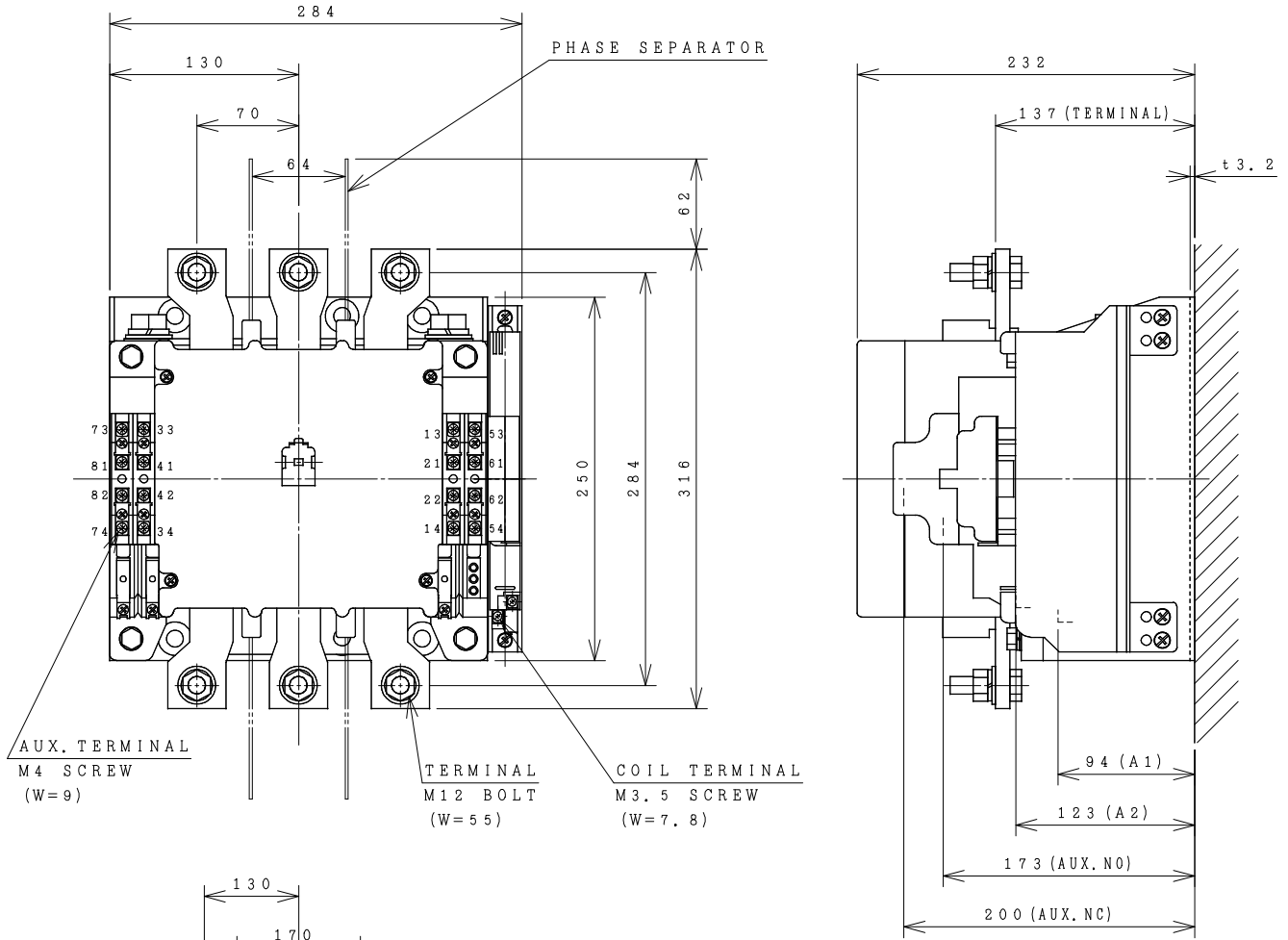


HITACHI ELECTROMAGNETIC CONTACTOR

Type	Rated insulation voltage (Ui)	Max. rated capacity of motor			Rated thermal current (AC1 = I _{th})	Applicable standard	Aux. Contact	Weight
		240V	160kW	600A				
H600C-G	AC 660 V	440V	300kW	600A	600 A	IEC 60947-4-1	4a4b	22 kg
		240V	160kW	600A				



(W=) : WIDTH OF TERMINAL.

※REMARK

- DIMENSION UNIT = Millimeter (mm.).
- (a) = AUX. CONTACT NORMALLY OPENED.
- (b) = AUX. CONTACT NORMALLY CLOSED.

(Reference 43057590R02).

DWN. S. CHAIAMPOL 07/09/16	PROJECTION	TITLE	REV.
CHKD. <i>Jan-a</i>	SCALE	DIMENSION OF H600C-G	00
APPD. <i>C. Kiattisak</i>	NTS.		01
HITT WORKS DWG. No.			01
HITACHI Hitachi Industrial Technology (Thailand), Ltd.			01
4HTN000942			