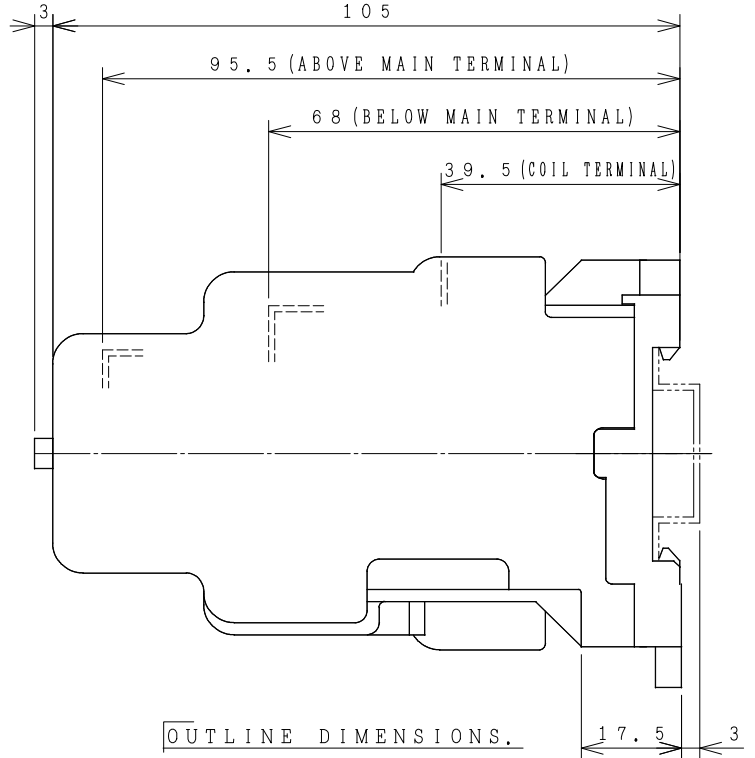
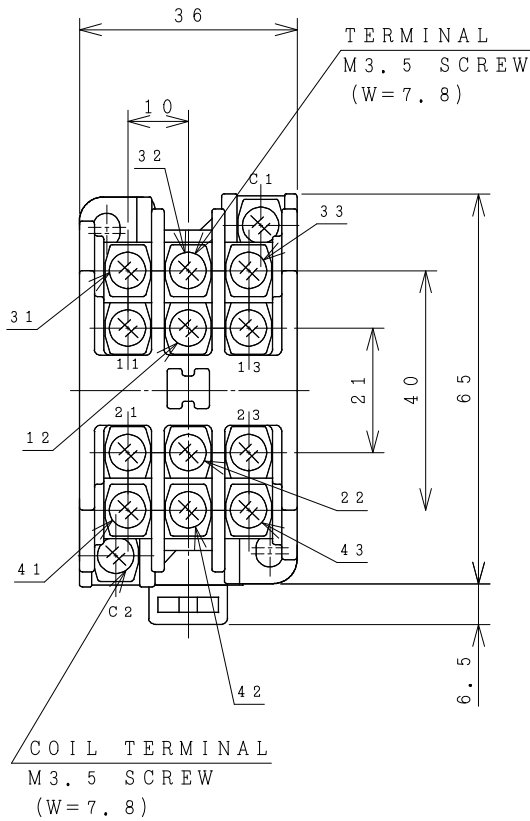


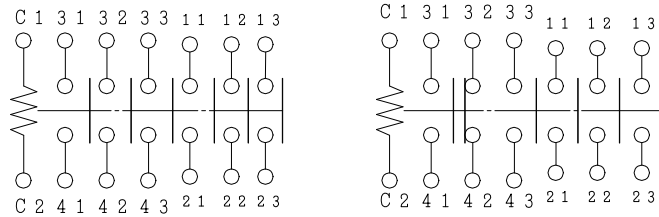
HITACHI CONTACTOR RELAYS

Type	Rated insulation voltage (Ui)	Rate Current (AC15)		Rated thermal current (Ith)	Applicable standard	Aux. Contact	Weight
X6	AC 660 V	240V	3 (2) A	15 (10) A	IEC 60947-5-1	6a, 5a1b 4a2b, 3a3b	0.29 kg
(X6-W)		440V	2 (1) A				

(X6-W) IN THE CASE OF TWIN CONTACTS TYPE.

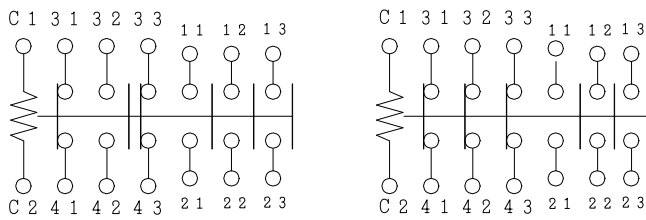


OUTLINE DIMENSIONS.



6 a

5 a 1 b



4 a 2 b

3 a 3 b

CONTACTS ARRANGEMENT.

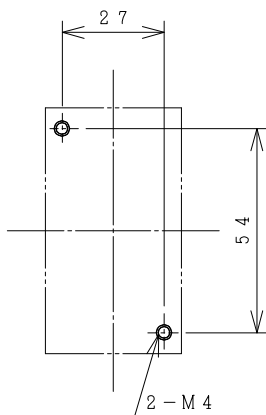
(Reference 43046424R02).

※REMARK

- DIMENSION UNIT = Millimeter (mm).

- (a) = AUX. CONTACT NORMALLY OPENED.

- (b) = AUX. CONTACT NORMALLY CLOSED.



MOUNTING HOLES.

DWN. C. JERRANAN	13/09/16	PROJECTION	TITLE
CHKD. <i>C. Kiatissak</i>		SCALE	DIMENSION OF X6, X6-W
APPD. <i>T. Kiatissak</i>		NTS.	
HITT WORKS DWG. No.			REV.
HITACHI Hitachi Industrial Technology (Thailand), Ltd.			00
			01
			01

27 x 52

ALSO POSSIBLE.

(W=) : WIDTH OF TERMINAL.

4HTN000954