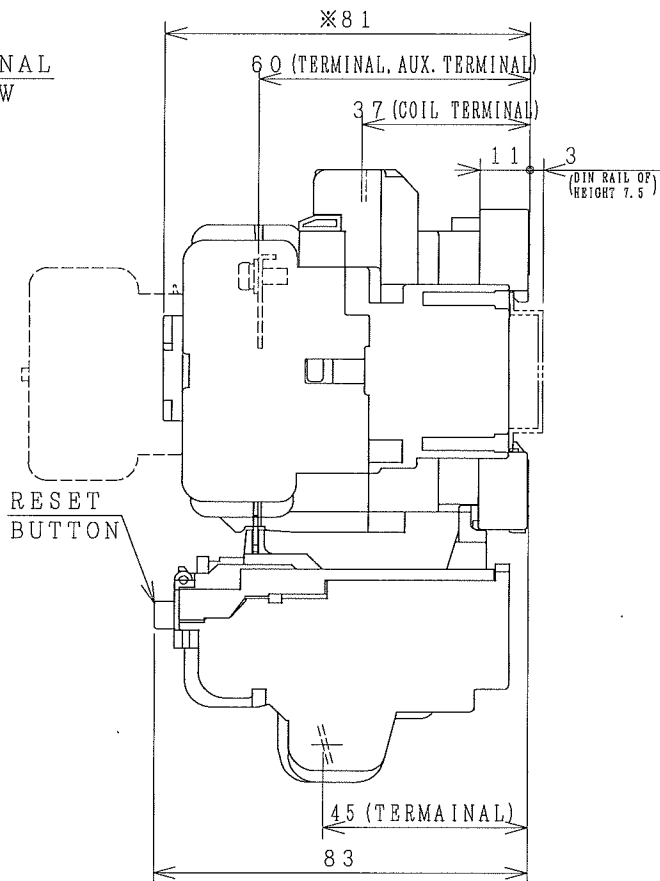
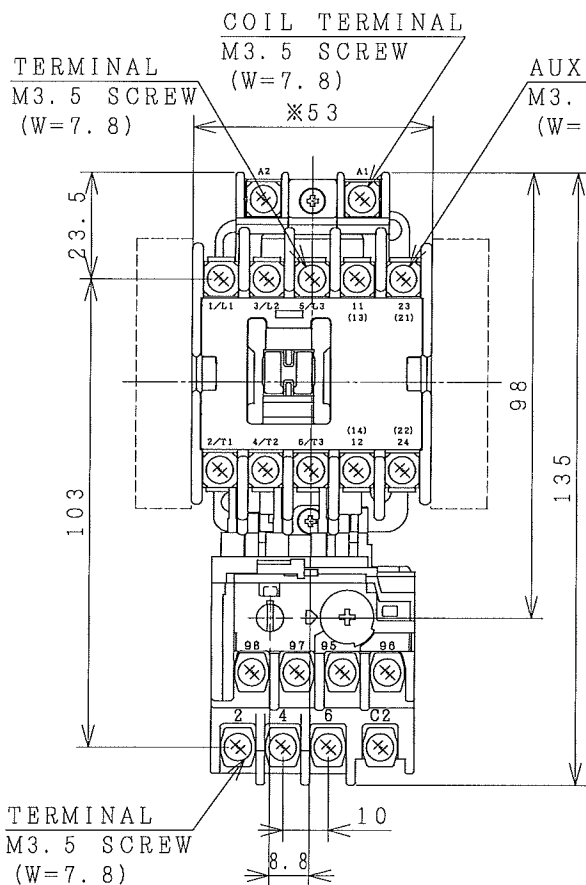


HITACHI ELECTROMAGNETIC SWITCH

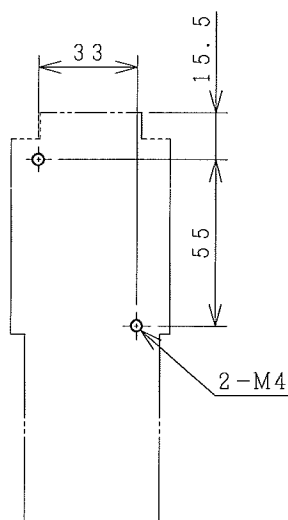
| Type | Rated insulation voltage (Ui) | Max. rated capacity of motor | | | Rated thermal current (AC1 = Ith) | Applicable standard | Aux. Contact | Weight |
|---------|-------------------------------|------------------------------|-------|-----|-----------------------------------|---------------------|----------------------|------------|
| | | 240V | 3.5kW | 13A | | | | |
| HS11-T | AC 690 V | 240V | 3.5kW | 13A | 20 A | IEC 60947-4-1 | 1a1b or 2a, 2b | 0.49 kg |
| HS11-TK | | 440V | 5.5kW | 12A | | | | |

※WITH AUX. CONTACT SIDE ON UNIT = 78mm.

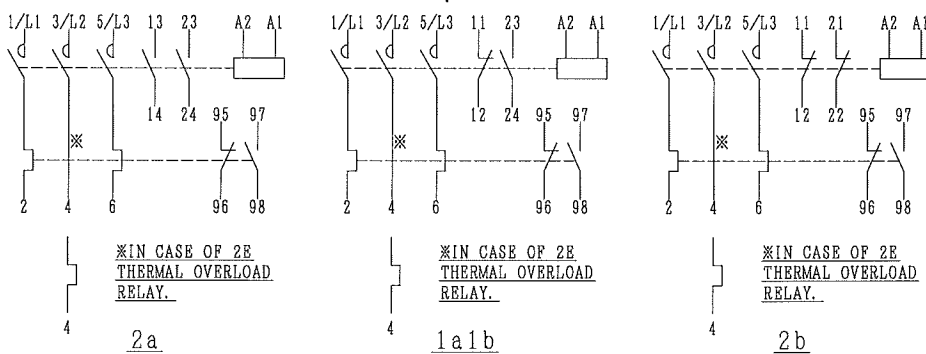
※WITH AUX. CONTACT HEAD ON UNIT = 112mm.



OUTLINE DIMENSIONS.



MOUNTING HOLES.



AUX. CONTACTS CONTACTS ARRANGEMENT.

※REMARK

- DIMENSION UNIT = Millimeter (mm).
- (a) = AUX. CONTACT NORMALLY OPENED.
- (b) = AUX. CONTACT NORMALLY CLOSED.

- 30x48
- 34x48
- 34x52
- 35x50

ALSO POSSIBLE.

(W=) : WIDTH OF TERMINAL.

| | | | | |
|---|--------------|----------|------------|----------------------------|
| DWN. | C. SITTICHAJ | 27/07/18 | PROJECTION | TITLE |
| CHKD. | J. Jambal | | SCALE | DIMENSION OF HS11-T, TK |
| APPD. | C. Krattarak | | NTS. | |
| HITACHI Hitachi Industrial Technology (Thailand), Ltd. | | | | HITT WORKS DWG. No. |
| | | | | 4HTN001143 |
| | | | | REV. |
| | | | | 00 |
| | | | | 01 |
| | | | | 01 |