

HITACHI ELECTROMAGNETIC SWITCH

Type	Rated insulation voltage (Ui)	Max. rated capacity of motor			Rated thermal current (AC1 = Ith)	Applicable standard	Aux. Contact	Weight
		240V	4.5kW	18A				
HS18-T	AC 690 V	240V	4.5kW	18A	20A A	IEC 60947-4-1	1a or 1b	0.46 kg
HS18-TK		440V	7.5kW	18A				

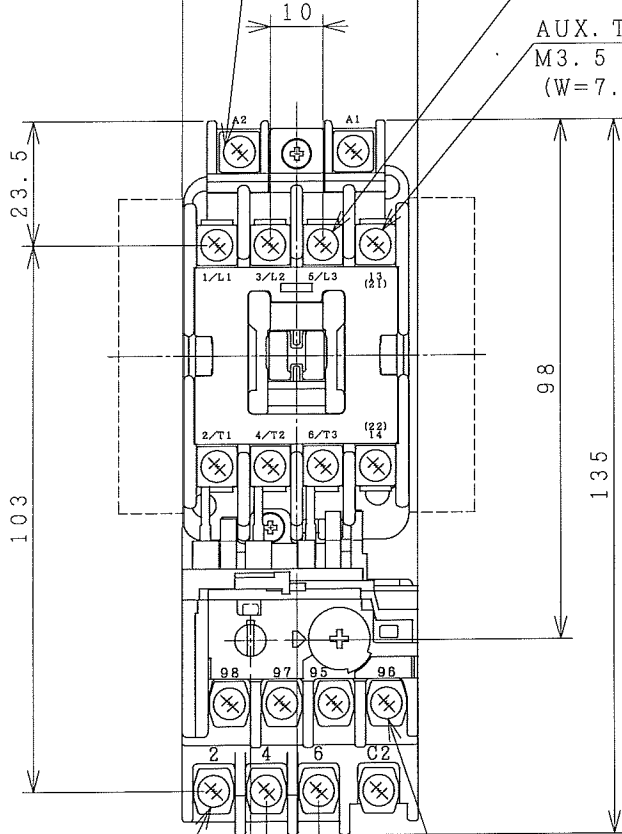
※WITH AUX. CONTACT SIDE ON UNIT = 68mm.

※WITH AUX. CONTACT HEAD ON UNIT = 112mm.

COIL TERMINAL
M3.5 SCREW
(W=7.8)

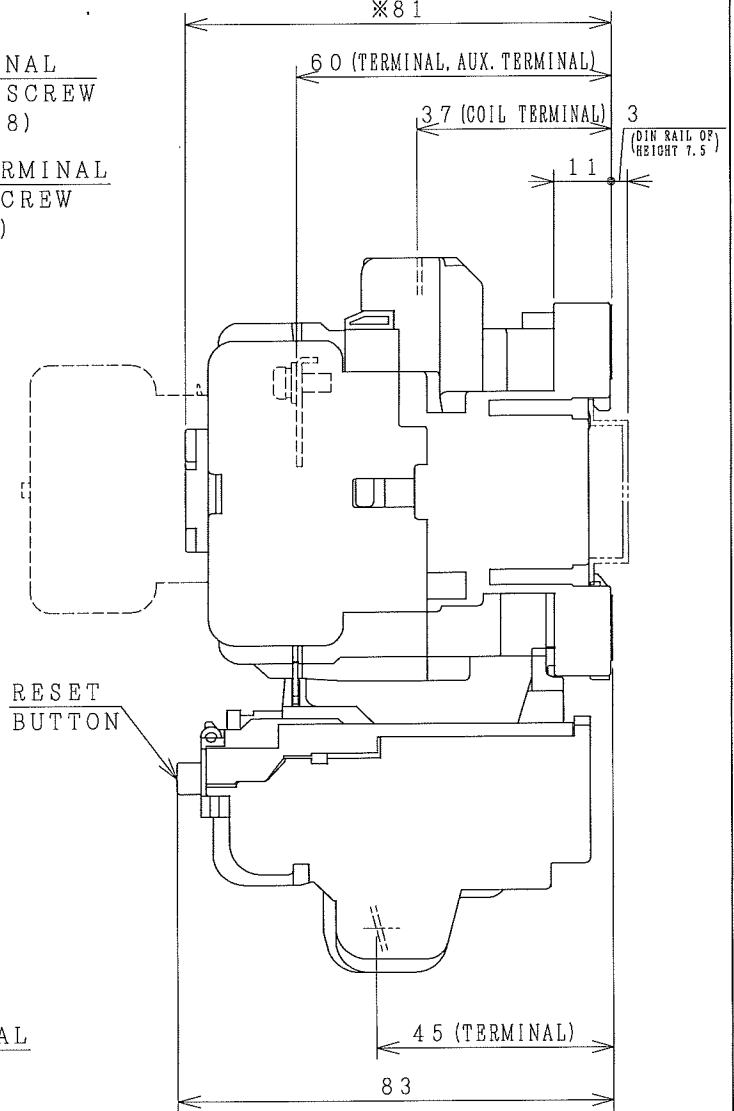
TERMINAL
M3.5 SCREW
(W=7.8)

AUX. TERMINAL
M3.5 SCREW
(W=7.8)



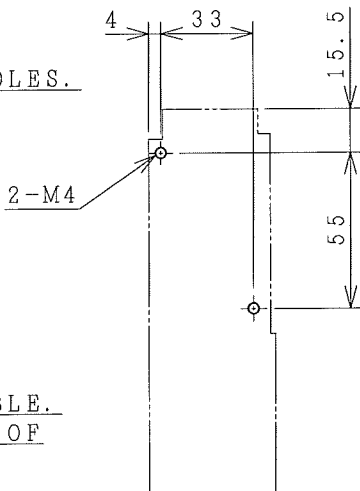
TERMINAL
M3.5 SCREW
(W=7.8)

AUX. TERMINAL
M3.5 SCREW
(W=7.8)



OUTLINE DIMENSIONS.

MOUNTING HOLES.

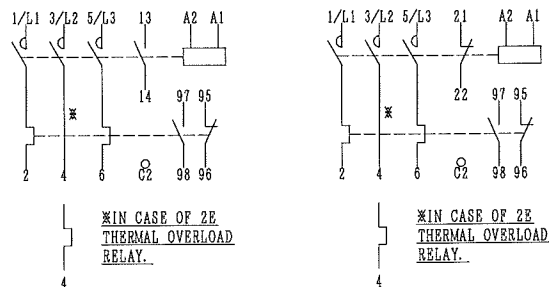


- 30x48
- 34x48
- 34x52
- 35x50

ALSO POSSIBLE.
(W=) : WIDTH OF
TERMINAL.

※REMARK

- DIMENSION UNIT = Millimeter (mm).
- (a) = AUX. CONTACT NORMALLY OPENED.
- (b) = AUX. CONTACT NORMALLY CLOSED.



AUX. CONTACTS : 1 a
CONTACTS ARRANGEMENT.

DWN. O. SITTICHAJ 27/07/18	PROJECTION	TITLE
CHKD. J. Jindell C. Kuthisak	SCALE NTS.	DIMENSION OF HS18-T, TK
APPD. S. Sugai		HITT WORKS DWG. No.
HITACHI Hitachi Industrial Technology (Thailand), Ltd.		4HTN001147
		REV.
	00	
	SH.	
	01	
	01	