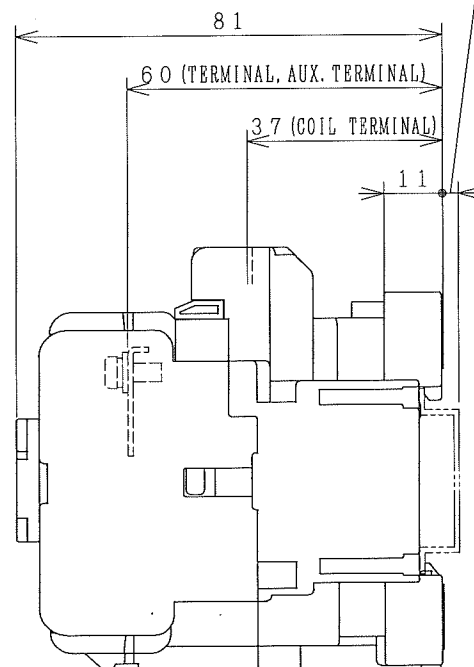
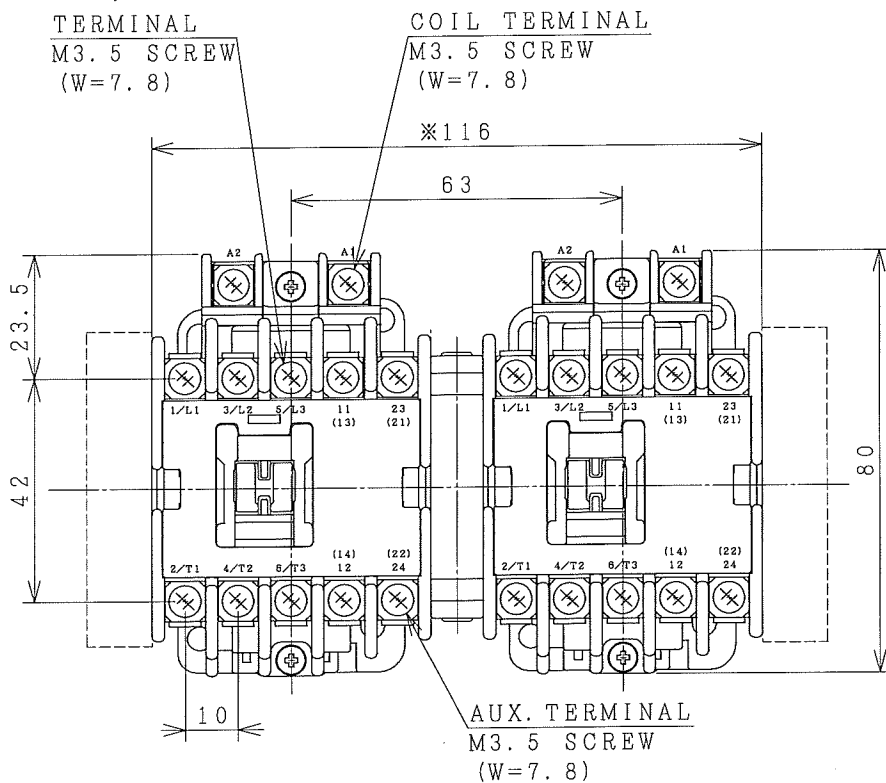


HITACHI ELECTROMAGNETIC CONTACTOR

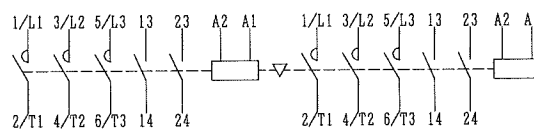
Type	Rated insulation voltage (Ui)	Max. rated capacity of motor			Rated thermal current (AC1 = Ith)	Applicable standard	Aux. Contact	Weight
		240V	4.5kW	18A				
HS19-R	690 V	440V	7.5kW	18A	20 A	IEC 60947-4-1	1a1b x 2 OR 2a x 2 OR 2b x 2	0.78 kg
		240V	4.5kW	18A				

※WITH AUX. CONTACT SIDE ON UNIT = 142mm.

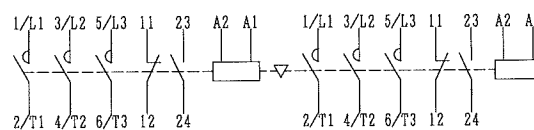
3 (DIN RAIL OF HEIGHT 7.5)



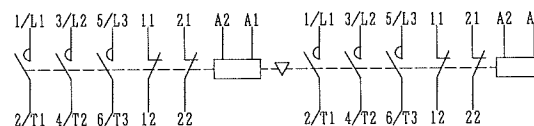
OUTLINE DIMENSIONS.



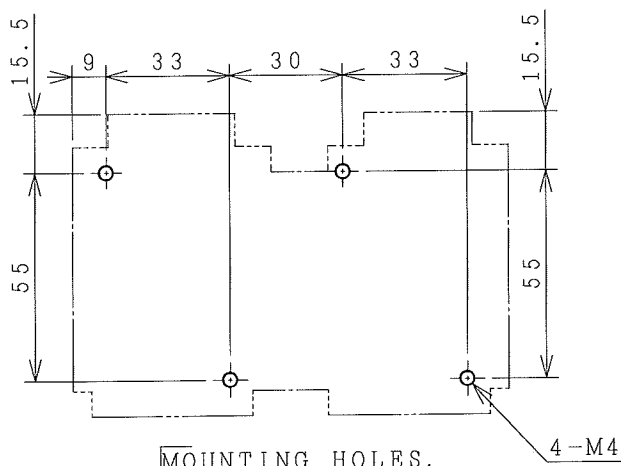
AUX. CONTACTS : 2a x 2



AUX. CONTACTS : 1a1b x 2



AUX. CONTACTS : 2b x 2
CONTACTS ARRANGEMENT.



MOUNTING HOLES.

4-M4

DWN.	O. SITTICHAJ	27/07/18	PROJECTION	TITLE
CHKD.	<i>J. Sittichai</i>			DIMENSION OF HS19-R
APPD.	<i>C. Kuthisak</i>		SCALE NTS.	
HITT WORKS DWG. No.				REV.
HITACHI Hitachi Industrial Technology (Thailand), Ltd.				00
				01
4HTN001152				01

※REMARK

- DIMENSION UNIT = Millimeter (mm).
- (a) = AUX. CONTACT NORMALLY OPENED.
- (b) = AUX. CONTACT NORMALLY CLOSED.
- (W) : WIDTH OF TERMINAL.