

HITACHI ELECTROMAGNETIC SWITCH

Type	Rated insulation voltage (Ui)	Max. rated capacity of motor			Rated thermal current (AC1 = Ith)	Applicable standard	Aux. Contact	Weight
		240V	7.5kW	32A				
HS32-T	690 V	240V	7.5kW	32A	32 A	IEC 60947-4-1	1a1b or 2a2b	0.58 kg
HS32-TK		440V	15kW	32A				

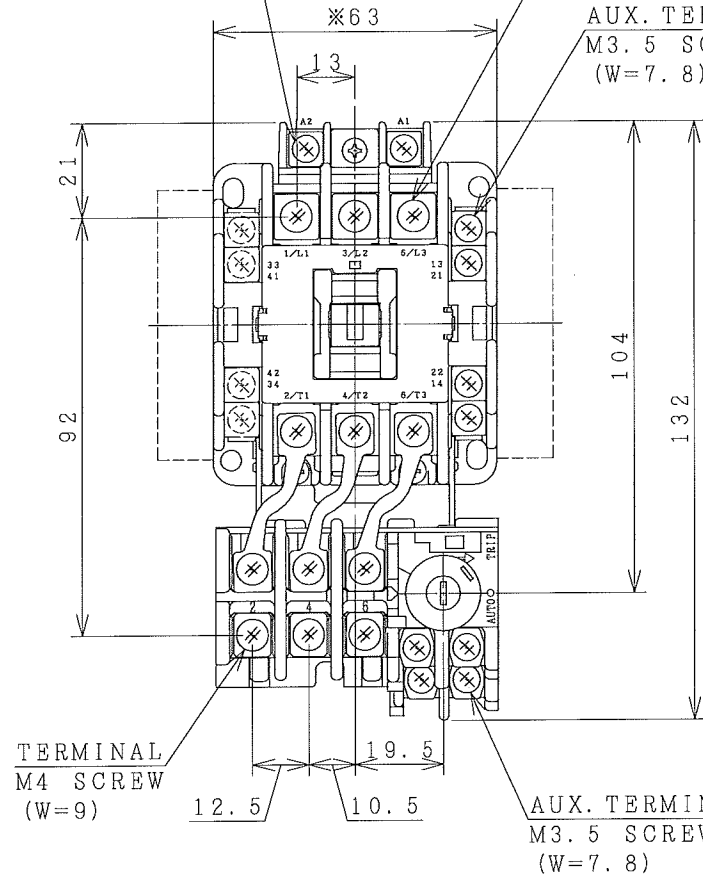
※WITH AUX. CONTACT SIDE ON UNIT = 88mm.

※WITH AUX. CONTACT HEAD ON UNIT = 112mm.

COIL TERMINAL
M3.5 SCREW
(W=7.8)

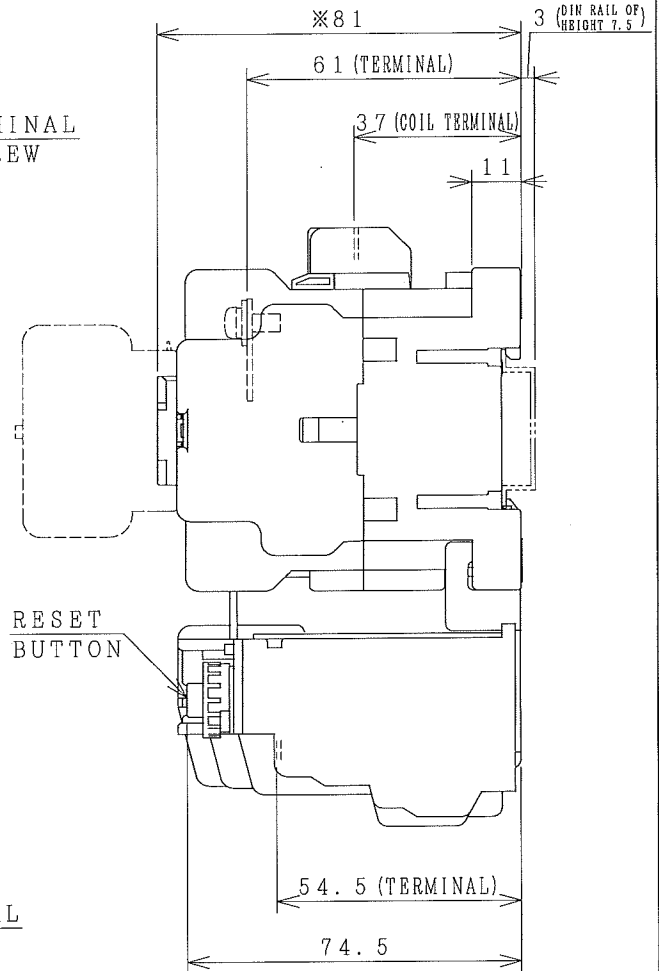
TERMINAL
M4 SCREW
(W=10.5)

AUX. TERMINAL
M3.5 SCREW
(W=7.8)

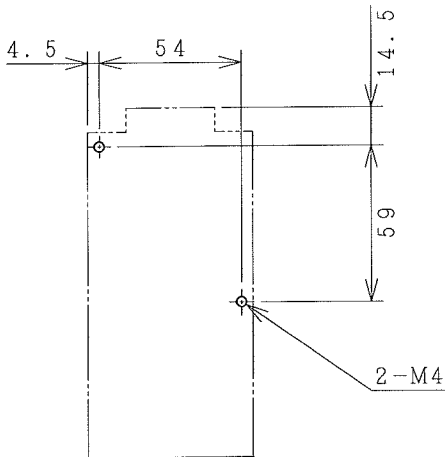


TERMINAL
M4 SCREW
(W=9)

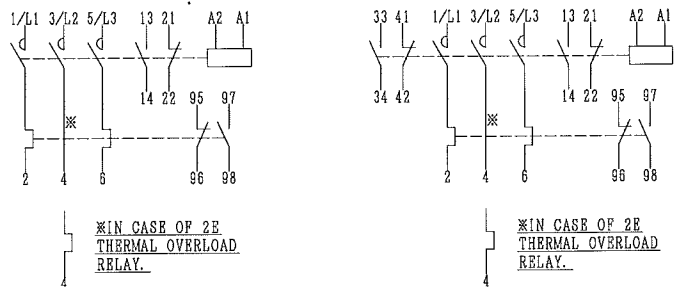
AUX. TERMINAL
M3.5 SCREW
(W=7.8)



OUTLINE DIMENSIONS.



MOUNTING HOLES.



※IN CASE OF 2E THERMAL OVERLOAD RELAY.

※IN CASE OF 2E THERMAL OVERLOAD RELAY.

AUX. CONTACTS CONTACTS ARRANGEMENT.

※REMARK

- DIMENSION UNIT = Millimeter (mm).
- (a) = AUX. CONTACT NORMALLY OPENED.
- (b) = AUX. CONTACT NORMALLY CLOSED.

DWN. O. SITTICHAI	25/07/18	PROJECTION	TITLE
CHKD. J. Janyak		SCALE	DIMENSION OF HS32-T, TK
APPD. S. Suga		NTS.	
HITACHI Hitachi Industrial Technology (Thailand), Ltd.			HITT WORKS DWG. No. 4HTN001155
			REV. 00
			SH. 01
			01

54x56
54x60

ALSO POSSIBLE.

(W=) : WIDTH OF TERMINAL.