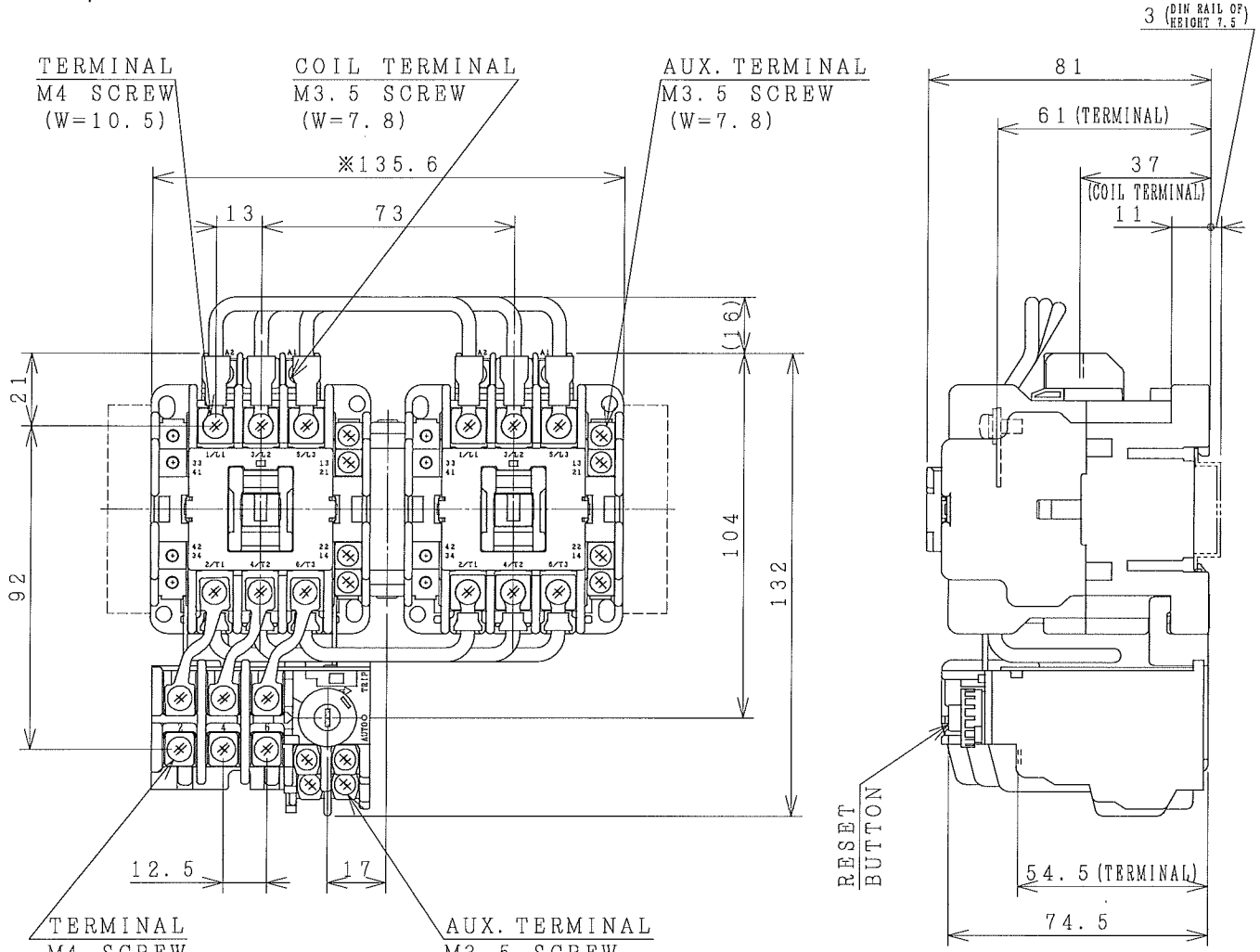


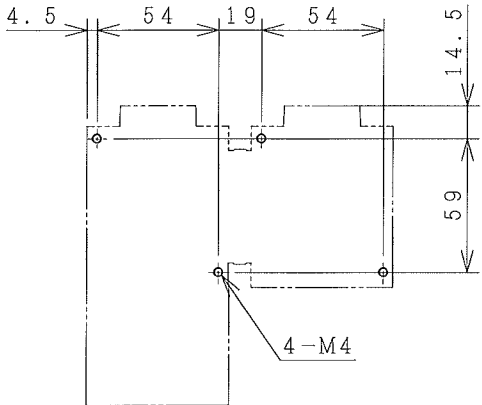
HITACHI ELECTROMAGNETIC SWITCH

Type	Rated insulation voltage (Ui)	Max. rated capacity of motor			Rated thermal current (AC1 = Ith)	Applicable standard	Aux. Contact	Weight
HS32-RT	AC 690 V	240V	7.5kW	32A	32 A	IEC 60947-4-1	1a1b x2	1.01 kg
HS32-RTK		440V	15kW	32A			2a2b x2	

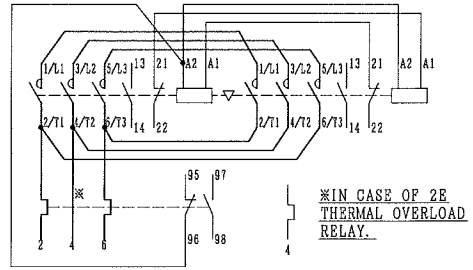
※WITH AUX. CONTACT SIDE ON UNIT = 161mm.



OUTLINE DIMENSIONS.



MOUNTING HOLES.



CONTACTS ARRANGEMENT.

(W=) : WIDTH OF TERMINAL.
 ※REMARK
 - DIMENSION UNIT = Millimeter (mm).
 - (a) = AUX. CONTACT NORMALLY OPENED.
 - (b) = AUX. CONTACT NORMALLY CLOSED.

DWN.	O. SITTICHAJ	25/07/18	PROJECTION	TITLE	
CHKD.	J. Jamsil		SCALE	DIMENSION OF HS32-RT, RTK	
APPD.	S. Sugai		NTS.		
HITACHI Hitachi Industrial Technology (Thailand), Ltd.				HITT WORKS DWG. No.	REV.
				4HTN001157	00 SH. 01 01