

# HITACHI ELECTROMAGNETIC CONTACTOR

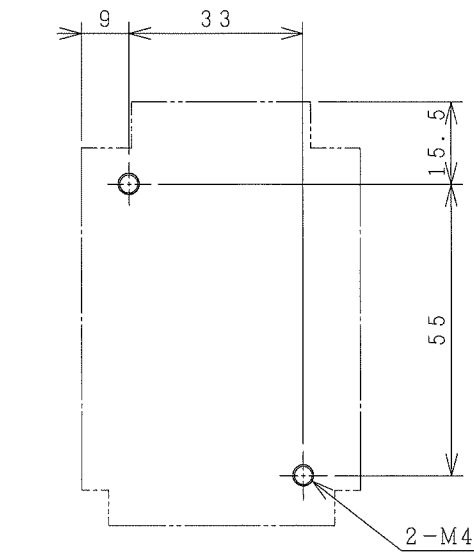
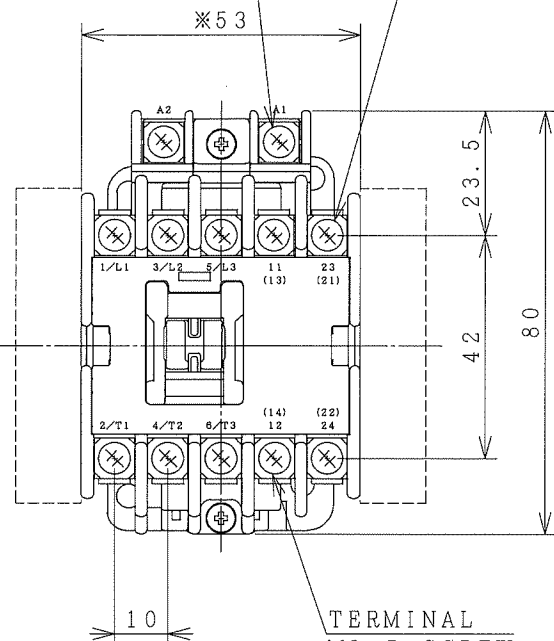
Type	Rated insulation voltage (Ui)	Max. rated capacity of motor			Rated thermal current (AC1 = Ith)	Applicable standard	Aux. Contact	Weight
		240V	3.5kW	13A				
HS11-G	AC 690 V	440V	4.5kW	12A	20 A	IEC 60947-4-1	1a	0.62 kg
							or 1b	

※WITH AUX. CONTACT SIDE ON UNIT = 78mm.

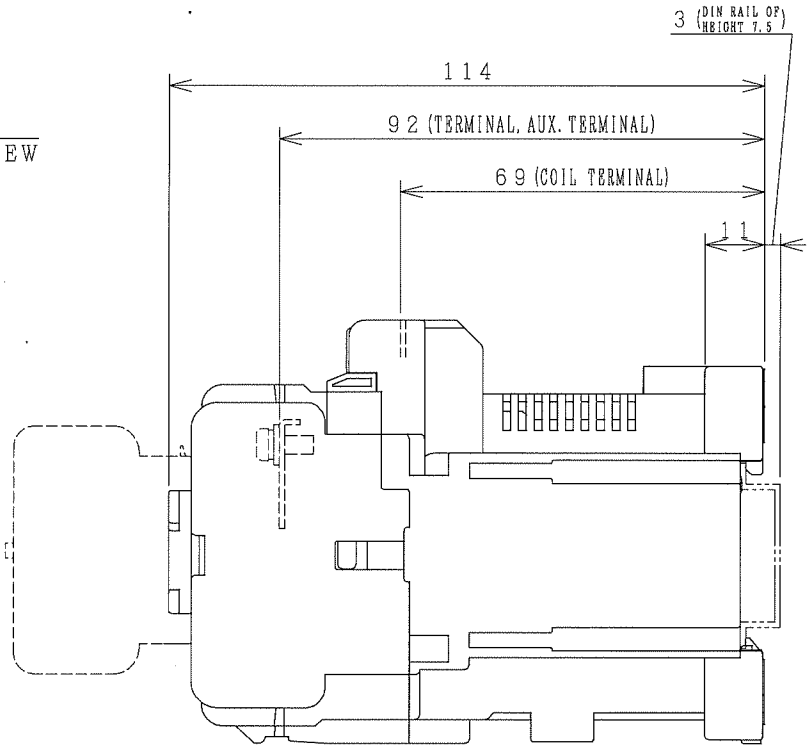
※WITH AUX. CONTACT HEAD ON UNIT = 145mm.

COIL TERMINAL  
M3.5 SCREW  
(W=7.8)

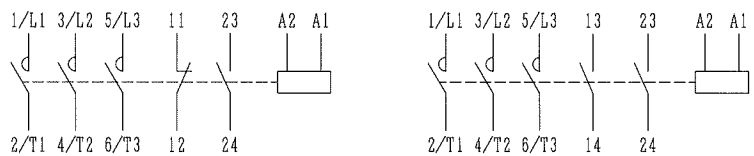
TERMINAL  
M3.5 SCREW  
(W=7.8)



MOUNTING HOLES.

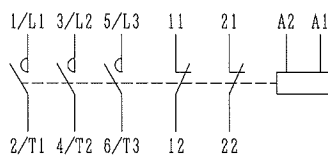


OUTLINE DIMENSIONS.



AUX. CONTACTS : 1 a 1 b

AUX. CONTACTS : 2 a



AUX. CONTACTS : 2 b  
CONTACTS ARRANGEMENT.

※REMARK

- DIMENSION UNIT = Millimeter (mm).
- (a) = AUX. CONTACT, NORMALLY OPENED.
- (b) = AUX. CONTACT NORMALLY CLOSED.

- 30 x 48
- 34 x 48
- 34 x 52
- 35 x 50

ALSO POSSIBLE.

(W=) : WIDTH OF TERMINAL.

DWN. T. THADAPONG	14/05/18	PROJECTION	TITLE
CHKD. J. Jomklu	S	SCALE NTS.	DIMENSION OF HS11-G
C. Kattisak			
APPD. S. Sugai	HITT WORKS DWG. No.		REV.
<b>HITACHI</b> Hitachi Industrial Technology (Thailand), Ltd.			00
			SH.
			01
4HTN001173			01