

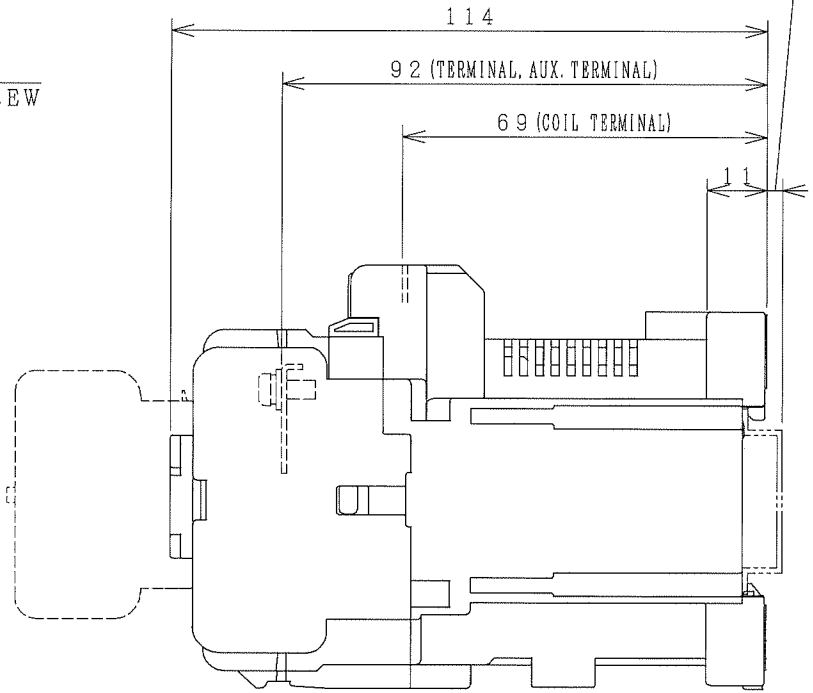
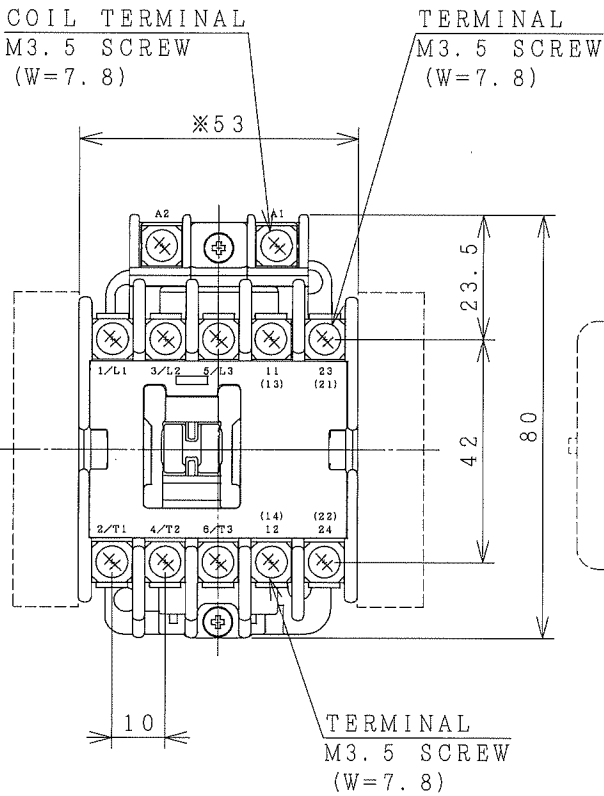
HITACHI ELECTROMAGNETIC CONTACTOR

Type	Rated insulation voltage (Ui)	Max. rated capacity of motor			Rated thermal current (AC1 = Ith)	Applicable standard	Aux. Contact	Weight
		240V	4.5kW	18A				
HS19-G	690 V	440V	7.5kW	18A	20 A	IEC 60947-4-1	1a	0.62 kg
							or 1b	

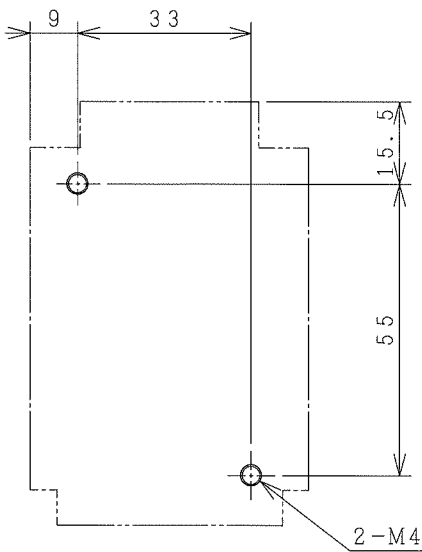
※WITH AUX. CONTACT SIDE ON UNIT = 78mm.

※WITH AUX. CONTACT HEAD ON UNIT = 145mm.

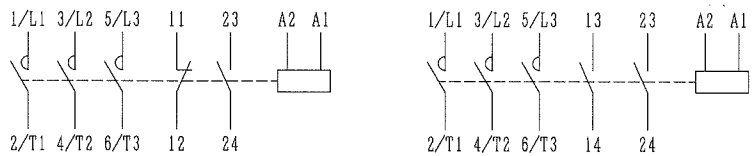
3 (DIN RAIL OP)
HEIGHT 7.5



OUTLINE DIMENSIONS.

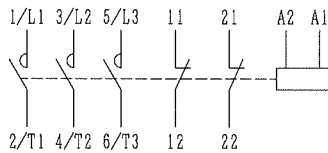


MOUNTING HOLES.



AUX. CONTACTS: 1 a 1 b

AUX. CONTACTS: 2 a



AUX. CONTACTS: 2 b

CONTACTS ARRANGEMENT.

※REMARK

- DIMENSION UNIT = Millimeter (mm).
- (a) = AUX. CONTACT NORMALLY OPENED.
- (b) = AUX. CONTACT NORMALLY CLOSED.

- 30 x 48
- 34 x 48
- 34 x 52
- 35 x 50

ALSO POSSIBLE.

(W=) : WIDTH OF TERMINAL.

DWN. T. THADAPONG	14/05/18	PROJECTION	TITLE
CHKD. J. Jomjit		SCALE	DIMENSION OF HS19-G
		NTS.	
APPD. S. Sugai			HITT WORKS DWG. No.
HITACHI Hitachi Industrial Technology (Thailand), Ltd.			REV.
			00
			SH.
			01
			4HTN001175